

TABLE OF CONTENTS

1	OVERVIEW	4
1.1	COMPONENTS	4
1.2	SPECIFICATIONS	5
1.3	OPTIONAL PC HARDWARE REQUIREMENTS	5
1.4	OPTIONAL PC SOFTWARE REQUIREMENTS.....	5
2	QUICK INSTALLATION.....	6
2.1	CONNECTING THE T-MAX® TIMING SYSTEM	6
2.2	SETTING THE ADDRESSES.....	6
3	INSTALLATION	7
3.1	WIRING	7
3.2	T-MAX® MANAGER.....	7
3.3	T-MAX® 3A.....	7
4	INITIAL CONFIGURATION	7
4.1	MANUALLY ADDRESSING T-MAX® 3As	7
4.2	T-MAX® MANAGER.....	8
5	MANUAL OPERATION.....	8
5.1	DESCRIPTION	8
5.2	INITIAL CONFIGURATION	9
5.2.1	<i>Initial Setup Mode.....</i>	<i>9</i>
5.2.2	<i>Display 1 - Delay</i>	<i>9</i>
5.2.3	<i>Display 2 - Auto Start.....</i>	<i>9</i>
5.2.4	<i>Display 3 - Maximum Bed Number</i>	<i>9</i>
5.2.5	<i>Display 4 - Display Mode</i>	<i>10</i>
5.2.6	<i>Displays 5 through 8 - Sending and Receiving Parameters.....</i>	<i>10</i>
5.3	STARTING A SESSION.....	11
5.4	PAUSING A SESSION.....	12
5.5	CANCELING A SESSION	12
5.6	CLEAN ROOM.....	12
6	COMPUTER OPERATION	12
6.1	INSTALLING ADNET 2000™.....	12
6.1.1	<i>Creating a Short Cut on Your Windows® Desktop</i>	<i>13</i>
6.2	SETTING UP ADNET 2000™	15
6.2.1	<i>Selecting the COM Port</i>	<i>15</i>
6.2.2	<i>Setting the Delay and Auto Start Mode.....</i>	<i>16</i>
6.3	USING ADNET 2000™	16
6.3.1	<i>Comms Status Screen.....</i>	<i>16</i>
6.3.2	<i>Manager Access Screen</i>	<i>17</i>
6.3.3	<i>Starting a Session.....</i>	<i>18</i>
6.3.4	<i>Canceling a Session.</i>	<i>18</i>

6.3.5	Getting and Changing Parameters	18
6.3.6	Manager Utilities	19
6.3.7	Download Program from PC to Manager	20
6.3.8	Edit Manager Setup	20
6.3.9	Rescan Manager	21
6.3.10	Auto Address the T-Max® System.....	21
6.4	ADNET.EXE	21
6.4.1	Installing ADNET.EXE onto the PC's Hard Disk Drive.....	22
6.4.2	Loading ADNET.EXE as a TSR.....	22
6.5	USING ADNET.EXE	22
6.5.1	Delay - Entering a delay.....	24
6.5.2	Tan - Session Control.....	25
6.5.3	Bank - Monitoring Beds.....	25
6.5.4	Hours - Bulb Hours.....	25
6.5.5	Session Counts	26
6.5.6	Auto - Changing the Session Start After a Delay.....	26
6.5.7	Rescan.....	26
6.5.8	Get Param - Monitoring Parameters.....	26
6.5.9	SeNd Param - Changing Parameters.....	26
6.5.10	Load - Sending FLASH1.BIN to T-Max® Mgr.....	27
6.5.11	Manual Parameters.....	27
6.5.12	Version.....	28
7	EXPANSION.....	28
7.1	ADDING BEDS	28
7.1.1	The ADNET-Repeater™ (optional).....	28
7.2	ADDING T-MAX® MGRS	28
8	T-MAX® 3A OVERVIEW.....	29
8.1	CONNECTING TO THE TANNING BED	29
8.2	SETTING PARAMETERS ON THE T-MAX® 3A	29
8.2.1	Setting the Address.....	30
8.2.2	Setting Delay Time.....	30
9	IN-ROOM SINGLE BED CONTROL.....	30
9.1	STARTING A SESSION.....	30
9.2	PAUSING A SESSION	31
9.3	CANCELING A SESSION.....	31
10	REMOTE SINGLE BED CONTROL.....	31
10.1	WIRING.....	31
10.2	CONFIGURATION.....	31
10.3	SESSION CONTROL.....	32
10.3.1	Starting a session	32
10.3.2	Pausing During the Session	32
10.3.3	Canceling a Session	32

11	OTHER FEATURES AND OPTIONS.....	32
11.1	CLEAN ROOM.....	32
11.2	COOL DOWN MODE	32
11.3	T-MAX® MONITORS (OPTIONAL).....	33
11.4	T-MAX® SENTRY™ (OPTIONAL).....	33
11.5	HIGH PRESSURE (SINGLE-SIDED) BEDS.....	34
11.5.1	Installing External Speaker (Optional).....	34
11.6	CONNECTING A REMOTE PUSH BUTTON TO THE T-MAX® 3A (OPTIONAL).....	34
11.7	CEB™ - THE WIRELESS CONNECTION (OPTIONAL)	34
11.8	T-MAX® ENCLOSURE (OPTIONAL).....	35
12	FIGURES.....	36
12.1	FIGURE A - FRONT VIEW OF THE T-MAX® 3A	36
12.2	FIGURE B - REAR VIEW OF T-MAX® 3A CIRCUIT BOARD	36
12.3	FIGURE C - CONNECTING THE T-MAX® SENTRY™	37
12.4	FIGURE D - CONNECTING TO LOWER CURRENT BEDS	37
12.5	FIGURE E - THE T-MAX® MANAGER	38
12.6	FIGURE F - CONNECTING THE T-MAX® SERIES	38
12.7	FIGURE G - MULTIPLE CONFIGURATIONS.....	39
12.8	FIGURE H - T-MAX® MGR JUMPER CONFIGURATIONS.....	40
12.9	FIGURE I - MODULAR CABLE PINOUTS.....	41
	FIGURE J - EXAMPLE OF AN EXTERNAL PUSH BUTTON CIRCUIT	41
12.11	FIGURE K - INITIAL SETUP DISPLAY	42
13	TROUBLE SHOOTING.....	43
13.1	TROUBLE SHOOTING.	43
13.2	ERROR CODES.....	45
14	INDEX.....	46

(C) COPYRIGHT 1995-99 By Salon Systems, Inc.

The information in this manual is believed to be correct. However, Salon Systems, Inc. assumes no responsibility for any errors herein. This information is subject to change without notice, and should not be construed as a commitment by Salon Systems, Inc.

WARRANTY

This product is warranted against defective materials and workmanship for a period of two years from date of purchase. In the event the product fails to perform, it may be returned; Shipping Paid, to the factory to be serviced or replaced at the factory's discretion. Salon Systems, Inc. will pay to ship the repaired or replaced product by the shipping means of our choosing. Returns will not be accepted without a Return Authorization Number assigned by the factory.

It is a Condition of Sale that the user of Salon Systems Inc.'s products assumes all risk and responsibility of use and indemnifies Salon Systems, Inc. against all damages. Salon Systems, Inc. is not liable for loss of profits, lost savings, special, incidental, consequential, indirect or other similar damages arising from breach of warranty, breach of contract, negligence, or other legal action even if Salon System, Inc. or its agent has been advised of the possibility of such damages, or for any claim brought against you by another party. This warranty allocates risks of product failure between the purchaser and Salon Systems, Inc. Salon System, Inc.'s hardware pricing reflects this allocation of risk and the limitations of liability contained in this warranty. It is a violation of the stated warranty to cut or modify the provided modular cables supplied with the T-Max® Series Timers. Connecting the T-Max® Series to third party timers not approved by Salon Systems, Inc. also violates the stated warranty. Contact your dealer or Salon Systems, Inc. to determine if your third party timer is approved by Salon Systems, Inc.

1 OVERVIEW

Congratulations on your purchase of Salon Systems, Inc.'s T-Max® Series of tanning bed timers. The T-Max® is designed for complete automation and control of your tanning equipment. It is also an excellent manual backup system in case your computer fails. The T-Max® Mgr can be used as a stand alone unit or can be controlled by a computer using many third party software packages. Manual operation is accomplished via front panel controls.

Operation via front panel controls is accomplished by pressing the proper sequence of buttons. There are eight LED displays, each showing the status of one bed. LED lights to the left show which bank of eight beds are being controlled, beds 1-8, 9-16, 17-24 and so on. If the T-Max® Mgr loses power, the T-Max® 3A's can be configured to be stand alone timers. As long as the T-Max® Mgr is active, only the Start/Stop and Clean Room features are available from the T-Max® 3A.

This manual should be used by a licensed electrician when installing your new system. Check for compliance with local building codes.

1.1 Components

T-Max® Mgr:

- 1 T-Max® Mgr Unit
- 1 9V @ 800mA Power Transformer
- 1 RS-232 Cable DB9M-DB9F DB9M-DB25F Com Port Adapter
- 1 This Manual
- 1 T-Max® Utility Software (3.5" diskette)
- 1 Terminator

T-Max® 3A/F (Sold separately, 1 required for each bed in the salon):

- 1 T-Max® 3A Timer Interface
- 1 9V @ 200mA Transformer
- 1 T-Max® 3A User's Guide
- 1 Modular cable with RJ-22 connectors on both ends

Contact your dealer if any components are missing.

Options:

T-Max® Enclosure™

Attaches to the T-Max® 3A to hang on the wall or set on a desk.

T-Max® Sentry™ (1 required for each T-Max® 3A)

Monitors bed for malfunctions, providing an alarm.

Security Switch

Key lock that connects to the T-Max® Mgr. Provides manual lockout.

T-Max® Slave Kit

Required for each slave T-Max® Mgr installed.

T-Max® Speaker

Connects to T-Max® 3A to provide for a higher volume alarm in tanning room.

T-Max® Monitor

Connects anywhere in the T-Max® Series daisy-chain to provide 64 dual-color lights to show the status of all beds in your salon.

T-Max® Monitor/Plus

Connects anywhere in the T-Max® Series daisy-chain to provide 16 displays showing bed times and status's.

CEB™

Adapter to provide wireless connection for the T-Max® Series.

ADNET-Repeater™ (Optional):

Connects in the middle of the daisy chain amplify the communications signal.

Contact your dealer for more information on all of our options for the T-Max® Series.

1.2 Specifications

T-Max® Mgr:

Power Supply		IN - 120VAC OUT - 9 to 12V (DC or AC) @ 800mA
Current Draw		800mA
Dimensions		5.25" x 10" x 2"
Communications	T-Max® Mgr - PC	RS-232C, 9600 Baud, 8Bit, 1 Stop Bit, No Parity

T-Max® 3A:

Power Supply		IN - 120VAC OUT - 9-12V (DC or AC) @ 800mA
Current Draw		200mA
Dimensions:	Cover Plate: T-Max® 3A PCB:	5.25" x 5.25" 2.5" x 3.75" x 1.5"
Relay:		220VAC @ 5A; SPST Form A

Display:

T-Max® Mgr:	8, 2 digit LED displays showing bed and time status.
T-Max® 3A:	1, 2 digit LED display showing bed and time status.

Maximum Units:

- 128 T-Max® 3A's controlling 128 beds.
- 8 T-Max® Mgrs can be used to control up to 128 beds.
- 1 Computer can be connected to each T-Max® Mgr.

1.3 Optional PC Hardware Requirements

- 1) 32KBytes available RAM.
- 2) 1.3MBytes available Hard Disk Drive Space.
- 3) 1 available RS232 port.
- 4) IBM AT, 286, 386, 486, Pentium or Compatible.

1.4 Optional PC Software Requirements

MS-DOS® 3.1 or higher; Windows® 95/98/NT

2 QUICK INSTALLATION

2.1 Connecting the T-Max® Timing System

- 1) Install a T-Max® 3A in each room. Install the T-Max® Manager at the front desk.
- 2) A 50' modular cable (phone type cable) is provided with each T-Max® 3A. Run one modular cable from the T-Max® Manager location to T-Max® 3A in the nearest tanning room. Run the other modular cables from room to room in a daisy-chain fashion.
- 3) Connect the modular cables to each T-Max® 3A and the T-Max® Mgr. When finished each T-Max® 3A except the last one will have a modular cable connected to each port.
- 4) Connect the tanning bed to the "Contact" screw terminals on the back of the T-Max® 3A in each tanning room.

Important: There may be many wires visible on the tanning bed. Two of these wires are specifically used for connecting the tanning bed to an external timer. If you do not know which wires to use, refer to the tanning bed's manual or contact the bed's manufacturer.

- 5) Each T-Max® 3A came with a 9-12V power supply. Connect a power supply to the "J4 - 12VAC" screw termination block on the back of each T-Max® 3A.
- 6) Plug each of the T-Max® 3A's power supplies into a standard 110V power outlet.

2.2 Setting the Addresses.

- 7) If the T-Max® Mgr has a key, turn the key fully clockwise.
- 8) Apply power to the T-Max® Mgr. Then wait 10 seconds.
- 9) Press the Start/Stop Button under displays 1 and 8 on the T-Max® Mgr at the same time until the displays change. Release the Start/Stop Buttons.
- 10) Press and release the Start/Stop Button under Display 2.

Display 3 on the T-Max® Manager will change to 1. Each T-Max® 3A will show a "99" on their displays and beep continuously.

- 11) Go to each room **in order** (1, 2, 3, 4, 5, 6 etc.) pressing the Start/Stop buttons in each room until the displays on each T-Max® 3A shows a 0.

As you press the Start/Stop buttons, Display 3 on the T-Max® Mgr will count up. This is the Max. Bed Number that the T-Max® Mgr will scan for each time power is applied.

- 12) Press the Change Display Beds button on the lower left corner of the T-Max® Mgr. After a short pause, the T-Max® Mgr will scan and show a number under each display that represents a bed number.

Installation is now complete.

3 INSTALLATION

3.1 Wiring

A modular cable with RJ-22 connectors needs to be run from the T-Max® Mgr to the first room and from room to room in a daisy chain fashion (Figure F, Section 12.6).

3.2 T-Max® Manager

Connect the 9V-power supply to the T-Max® Mgr and a 110VAC outlet. Connect the modular cable going to the tanning room to the modular connector on the T-Max® Mgr. If you are using a PC, connect the RS-232 DB9F-DB9M cable between the serial port on the T-Max® Mgr and the serial port on your computer (refer to Figure F, Section 12.6).

3.3 T-Max® 3A

Connect the modular cable connected to the T-Max® Mgr to one of the modular ports on the back of the T-Max® 3A in the first tanning room. Connect the modular cable running to the next tanning room to the open modular port. In the second tanning room, connect the modular cable from the first tanning room to one of the modular ports on the back of the T-Max® 3A. Continue until all of the rooms are connected.

Connect the 9V power supply that came with each T-Max® 3A to the “Pwr In 9-12V” screw terminal block on the back of each T-Max® 3A. Connect the tanning bed to the “Contact” screw terminals on the back of the T-Max® 3A.

Note: There may be many wires visible on the tanning bed. Two of these wires are specifically used for connecting the tanning bed to an external timer. If you do not know which wires to use, refer to the tanning bed’s manual or contact the bed’s manufacturer. The T-Max® 3A will touch these wires together to energize the bed.

4 INITIAL CONFIGURATION

4.1 Manually Addressing T-Max® 3As

Note: If you are installing new T-Max® system and have just completed Section 2 (Quick Installation), the addresses on the T-Max® 3As are set and you do not need to independently set addresses on the T-Max® 3As

- 1) Remove power from the T-Max® Mgr.
- 2) Apply power to the T-Max® 3A. It should show a 9.9 and an alarm should sound.
If it just shows a 0, go to Step 4.
- 3) Press and release the Start/Stop button. The display will flash an 8.8 and the alarm will stop. Press and release the Up button until the display stops flashing.
- 4) Press and hold the Start/Stop and Up Buttons on the T-Max® 3A until a .1 appears on the display. This should take about 5-6 seconds. Release the buttons.

5) Press the Start/Stop button on the display. A flashing number will appear. This is the Address that the timer is currently set to.

6) Press the Up or Down button until the desired address is displayed.

Note: When setting the addresses, remember these three rules:

- Set each T-Max® 3A to a unique address.
- Do not set any T-Max® 3A to address 00.
- If the period is flashing, you are over address 100.

7) Once the desired address is displayed, press and release the Start/Stop button. A solid .1 will be displayed.

8) Press and hold both the Up and Down buttons until a 0 is displayed.

Repeat Steps 2-8 for each T-Max® 3A that you are manually setting the address on.

4.2 T-Max® Manager

1) Make sure all wiring is completed. Refer to Section 3 for wiring instructions.

2) Make sure that the modular cable running to Room1 is connected to the modular connector on the T-Max® Mgr (Refer to Figure F, Section 12.6).

3) Apply power to the T-Max® Mgr.

Note: On power up the T-Max® Mgr displays will momentarily show 1,2,3,4,5,6,7,8, then the Displays 7 and 8 will show values. Display 7 is the T-Max® Mgr number, or the address the T-Max® Mgr is set to: “0” is the Master setting and 1-7 are the Slave settings. Display 8 is the software version number in the T-Max® Mgr. Refer Section 7.2 to set up a T-Max® Mgr as a Slave.

If you are using a computer, refer to Section 6.

5 MANUAL OPERATION

5.1 Description

The T-Max® Mgr has eight LED displays across the top. These displays show bed status, eight beds at a time. Below each display are two push buttons: the Set and Start/Stop buttons. These buttons control bed operation. On the lower left side of the T-Max® Mgr are eight LEDs aligned vertically, with a push button labeled “Change Displayed Beds” at the bottom. Each LED represents 8 beds. When the top LED is displayed, beds 1-8 are shown on the displays. When the next LED is illuminated, beds 9-16 are displayed, and so on. Which ever bed is shown on the display will be the bed controlled by the two push buttons below that display. Pressing the “Change Displayed Beds” button changes which beds are displayed and controlled. (refer to Figure E, Section 12.5).

On power up the T-Max® Mgr will scan the network to find all T-Max® 3As connected. Two dashes on a display indicates that no T-Max® 3A was found at that address.

5.2 Initial Configuration

Note: If you are connected to a Computer and want to go to manual control, disconnect the computer cable from the side of the T-Max® Mgr, then cycle power. If your T-Max® Mgr has the Key Lock Option, make sure Security Switch Key is turned clockwise ¼ turn. If the T-Max® Mgr is in the upright position, the key lock should be in the horizontal position. If you have already set up the T-Max® Mgr and just want to start sessions manually, go to Section 5.3

5.2.1 Initial Setup Mode

Apply power to the T-Max® Mgr and wait until the T-Max® Mgr stops scanning. Press the Start/Stop buttons under Displays 1 and 8 simultaneously until some or all of the displays change values. Release the buttons. The display descriptions are as follows:

- Display 1 = Delay (Section 5.2.2)
- Display 2 = Auto Start (Section 5.2.3)
- Display 3 = Maximum Bed Number (Section 5.2.4)
- Display 4 = Display Mode (Section 5.2.5)
- Displays 5-8 = Parameter values stored in the T-Max® 3As. (Section 5.2.6)

5.2.2 Display 1 - Delay

Below Display 1, press the Set button to set the delay time in minutes. The maximum delay time that can be set is 10 minutes. If you want the session to start immediately, set Display 1 to 0. The delay is for every bed connected to the T-Max® Series.

5.2.3 Display 2 - Auto Start

The Auto Start mode will allow you to determine what mode the T-Max® 3A will be in after the delay time expires. Press the Set button to set the Auto Start.

- 0 - The session time will start immediately after the Delay time expires, but the bed will not energize. The Start/Stop button on the T-Max® 3A must be pressed before bed will come on.
- 1 - The session time will start and the tanning bed will energize immediately after the delay time expires.
- 2 - Infinite Delay. The Start/Stop button must be pressed on the T-Max® 3A to start the session. The delay time set on Display 1 (or on a computer) will be ignored.

Note: This setting is for every bed in the salon. If the Start/Stop button is pressed on the T-Max® 3A before the delay time has expired, the session will start and the bed will energize. Pressing the Start/Stop button on the T-Max® Mgr after the session has been sent to the T-Max® 3A in the tanning room will NOT turn the bed on.

5.2.4 Display 3 - Maximum Bed Number

Press the Set button under Display 3 to set the maximum bed number. This number must be either equal to or higher than the highest address that the T-Max® 3As are set to.

5.2.5 Display 4 - Display Mode

Display 4 allows the user to choose what will be displayed on the T-Max® Mgr after a session has ended. Press the Set button to set the value to either a “1” or “0”.

1 - The session time that was previously entered will be displayed after the session has ended and the clean room indication has been cleared. For example, if a session time of 20 minutes was entered, after a session time has ended, a 20 will be displayed after the clean room indication is cleared.

0 - A “0” will be displayed after a session has ended and the clean room indication has been cleared.

5.2.6 Displays 5 through 8 - Sending and Receiving Parameters

Note: If you are using more than one T-Max® Mgr in a Master-Slave configuration, you can only monitor and send parameters from the Master T-Max® Mgr.

Displays 5 through 8 can be used to get and send parameters (lamp hours, session counts, etc.). Use Table 1 to determine which parameter you wish check or change.

Press the set button under Display 5 until the bed number that you want to observe or change is shown in Display 5. Press the Set button under Display 6 until the parameter number you wish to observe or change is displayed in Display 6.

5.2.6.1 Checking Parameters Stored in the T-Max® 3As

Press the Start/Stop button under Display 6. The values stored in the T-Max® 3A shown on Display 5 for the Parameter shown on Display 6 will be displayed in Displays 7 and 8.

Pressing the Set button under the Display 5 will allow you observe the chosen parameter for each bed.

Note: If the display shows EEEE, then either the parameter stored in the T-Max® 3A is higher than 9999 or you are trying to get a parameter from a bed number you don't have.

5.2.6.2 Changing Parameters Stored in the T-Max® 3As

1) Press the Start/Stop and Set buttons under Displays 7 and 8 to change the value. Pressing the Set buttons will increment these values, pressing the Start/Stop buttons will decrement these values.

Display 7 is the thousands and hundreds digits. Display 8 is the tens and ones digits. For example, if you set Display 7 to 78, and Display 8 to 12, then the value sent will be 7812. If the value you see is blank, 9, blank, 2, then the value is 902. A blank display = “0”.

The highest value that can be sent from the T-Max® Mgr is 9999. Using PC, some values can be set as high as 65535 (see Table 1, Max #). Pressing the Start/Stop and Set buttons simultaneously under Displays 7 and 8 will set Displays 7 and 8 to 0. If you want to clear a value, such as Bulb Hours after you have changed the bulbs in your tanning bed, set Displays 7 and 8 to 0.

2) Press the Start/Stop button under Display 5 to send the new value to the selected timer.

3) To exit the Initial Setup Mode, press and release the Change Displayed Beds button.

If you are using a computer, turn the Security Key completely counter-clockwise to prevent any one else from entering the Initial Setup Mode. If you are not using a computer, the Security Key must remain in the clockwise position.

Table 1 - Parameter Numbers for Getting and Sending Parameters.

Param #	Description	Max #	Default	Notes
1	Address	255	254	Address of timer
2	Beep Mode	1	0	Used for High Pressure beds. The T-Max® 3A will beep 10 seconds half way through the session. 0=disabled, 1=Enabled.
3	Delay Time	10	0	Delay in minutes stored in the T-Max® 3A.
4	Current Sense	1	0	T-Max® Sentry™ Option. 0=Disabled, 1=Enabled.
5	Session Counts	65535	0	Total session counts for T-Max® 3As.
6	Lamp Hours	65535	0	Bulb hours for each bed.
7	Bed Hours	65535	0	How many hours a bed is on.
8	Manual Session Counts	65535	0	Counts the # of sessions T-Max® 3A has run as a stand alone timer. Sessions started from T-Max® Mgr or PC not counted.
9	Clean Room	1	1	0=Clean Room Disabled, 1=Enabled
10*	Manual Lockout*	1	0	0=Stand Alone Enabled, 1=Disabled. Prevents the T-Max® 3A from being an independent timer.
13	Cool Down Mode	10	0	0 = Disabled, 1-10=Enabled. Time delay in minutes allowing bed to cool. New session cannot start until time expires.
15	Fixed Session Counts	65535	0	Counts number of sessions ran through the T-Max® 3A. This value cannot be changed. Used as point of reference.
17	Clean Clear	1	0	0 = Press and hold the Set button for 3-4 seconds to clear the clean room. 1 = Press and release the Set button to instantly clear the clean room.
18	Redisplay	2	0	0=After a session ends and the clean room is cleared, the T-Max® 3A will show a 0. 1=After session ends and the clean room is cleared, the T-Max® 3A will show the last session time entered. 2 = After the session ends and the clean room is cleared, the max. time will show on the T-Max® 3A.
19	TPI	1	0	Third Party interface mode. Must be set when connecting timer to non-T-Max® timing system.
20	External Speaker	1	0	Set to a 1 if connecting an external speaker to a T-Max® 3A. Set to 0 if using speaker on the T-Max® 3A.
21	Pause Mode	1	0	0 = When session is paused, time will continue to count down. 1 = When session is paused, session time will stop counting down.
22	Auto Bed Shut Off	1	0	For T-Max Intercom Systems Only. 0 = When timer is called bed will stay on, 1 = When timer is called, bed will stuff off automatically.

2) Press the Start/Stop button under Display 5 to send the new value to the selected timer.

3) To exit the Initial Setup Mode, press and release the Change Displayed Beds button.

If you are using a computer, turn the Security Key completely counter-clockwise to prevent any one else from entering the Initial Setup Mode. If you are not using a computer, the Security Key must remain in the clockwise position.

5.3 Starting A Session

1) Press the “Change Displayed Beds” button until the desired bed displayed.

2) Press the Set button below that display until the desired the session time is set.

3) Press the Start/Stop button to start the session.

If a delay time other than 0 is entered, the delay time will be displayed on the T-Max® Mgr and the T-Max® 3A in that room. A fast flashing period will be displayed on the lower right

corner on the T-Max® Mgr and T-Max® 3A displays. Once the Session starts, the session time will be displayed on the T-Max® Mgr and the T-Max® 3A. The flashing light will slow to a once per second rate.

If the Auto Start Mode is set to a 2 (Infinite Delay), the displays on the T-Max® 3A and the T-Max® Manager will show the session time with a fast flashing period on the lower right corner. The customer must press the Start/Stop button on the T-Max® 3A to start the session. The Delay will be ignored.

5.4 Pausing A Session

Press the Start/Stop button on the T-Max® 3A. The flashing period on the T-Max® 3A and the T-Max® Mgr will stop flashing and stay illuminated. The session time will continue to count and the display on the T-Max® 3A and the T-Max® Mgr will continue to reflect the remaining session time. To restart the session, press the Start/Stop button and the period will continue flashing.

5.5 Canceling A Session

To cancel a session, press the Start/Stop and Set buttons on the T-Max® Mgr under that rooms display at the same time.

If the session was canceled while the T-Max® 3A was still in Delay, the clean room indication will not appear. If the Clean Room Indication is enabled on the T-Max® 3A and session was canceled after the tanning bed has been energized, the clean room indication will appear on the T-Max® 3A and the T-Max® Mgr.

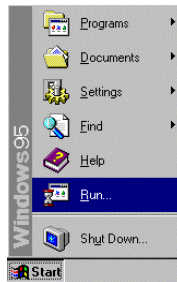
5.6 Clean Room

Once the session time has elapsed, the display will show two periods with no numbers which is an indication that the room needs to be cleaned. For a complete description of Clean Room, refer to Section 11.1.

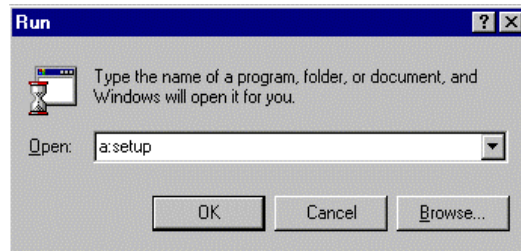
6 COMPUTER OPERATION

6.1 Installing ADNET 2000™

- 1) Place the ADNET 2000™ diskette in drive A.



- 2) Click Start with your left mouse button.
- 3) Click Run with your left mouse button.



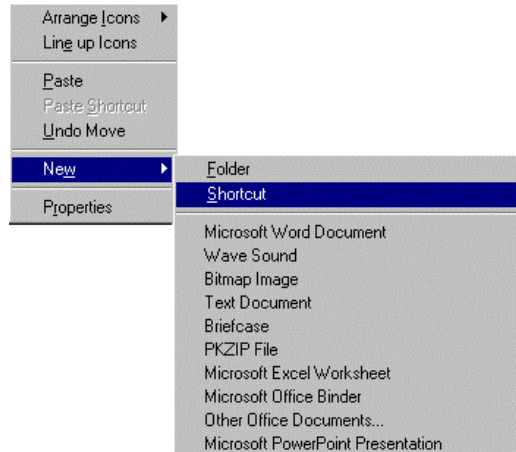
- 4) Type the following: a:setup.
- 5) Click OK (or press Enter)
- 6) Follow the directions on the screen

6.1.1 Creating a Short Cut on Your Windows® Desktop.

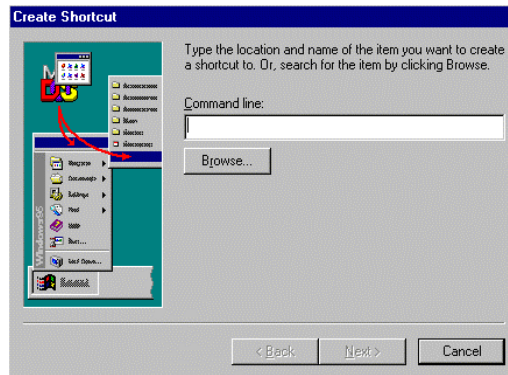
- 1) Place your mouse anywhere on the desktop screen. Make sure it is not over an existing Icon.2)



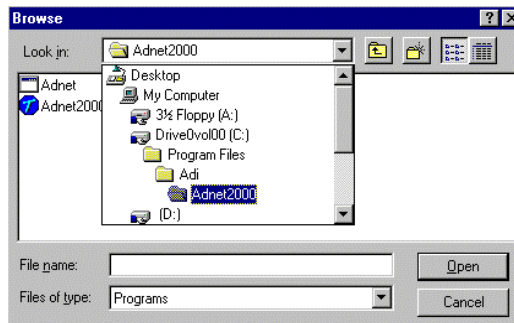
- 2) Press the right mouse button. A window will appear.
- 3) Move the mouse pointer to New. A second window will appear.



4) Move the mouse to Shortcut and click it with your left mouse button. A Create Shortcut window will appear.



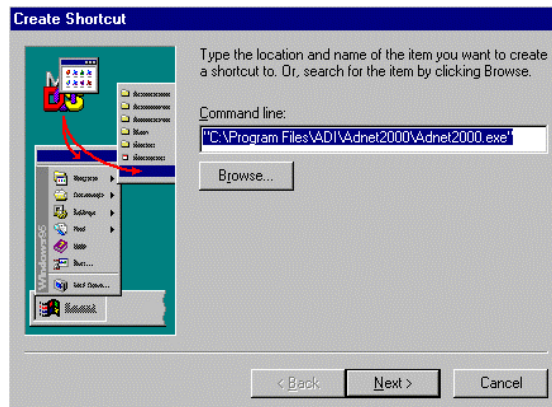
5) Click Browse. A Browse window will appear.



6) Double click the folder that you installed ADNET 2000™ into with your left mouse button.

The factory default folder is c:\program files\adi\ADNET2000. This is the folder the ADNET 2000™ files will probably be under.

7) Double click the ADNET 2000™ icon with your left mouse button. The Create Shortcut window will reappear.



- 8) Click Next with your left mouse button.
- 9) Click Finished with your left mouse button.
- 10) The ADNET 2000™ icon will appear where you placed your mouse in Step One.

6.2 Setting Up ADNET 2000™

Make sure ADNET 2000™ is properly installed and the icon is created as described in Section 1. Double click the ADNET 2000™ Icon with your left mouse button. The ADNET 2000™ window will appear:

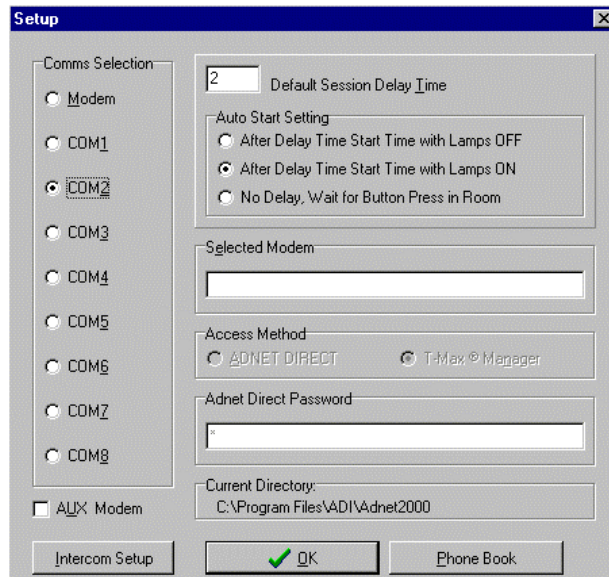
ADNET 2000™ Window



6.2.1 Selecting the COM Port

- 1) Click Setup with your left mouse button. The Setup window will appear

Setup Window



2) Click the COM port that you are connected to with your left mouse button. A black circle will appear beside that COM port you have selected.

6.2.2 Setting the Delay and Auto Start Mode

- 1) Place the mouse in the window to the left of “Default Session Delay Time” and click the left mouse button. A flashing cursor will appear in the window.
- 2) Use the Delete or Backspace key to delete the number currently in the window and type in the desired delay time.

The longest the delay time can be is 10 minutes. If no delay time is desired (Start session immediately) enter a 0. If infinite delay time is desired (allowing the customer as much time as they want to get undressed), go to Step 3.

- 3) In the Auto Start Setting window, place the mouse in the circle and click the left mouse button to set the Auto Start Setting.

After Delay Time Start with Lamps OFF – After the delay time expires, the session time will start but the lamps will not come on. The display on the timer will show the remaining session time. The Start/Stop button must be pressed to turn the lamps on.

After Delay Time Start with Lamps ON - After the delay time expires, the session time will start and the lamps will come on automatically. The display on the timer will show the remaining session time.

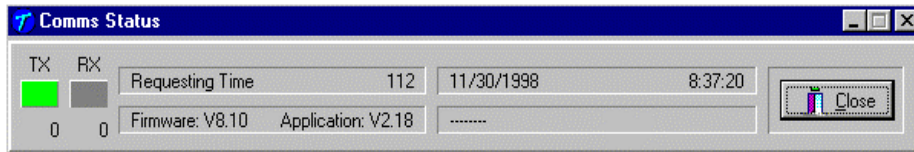
No Delay, Wait For Button Press in Room – The timer will show the session time in the room but will not count down. The Start/Stop button on the timer in the room must be pressed to energize the lamps and start the session time counting down.

- 5) Click OK. The ADNET 2000™ window will reappear

6.3 Using ADNET 2000™

- 1) Make sure the T-Max® Manager is properly installed and connected to the computer. Refer to the T-Max® Manager User’s guide.
- 2) Click Start. The Comms Status and Manager Access Screens will appear.

Comms Status Window



6.3.1 Comms Status Screen

The Comms status screen shows the status of communications between ADNET 2000™ and the T-Max® Mgr.

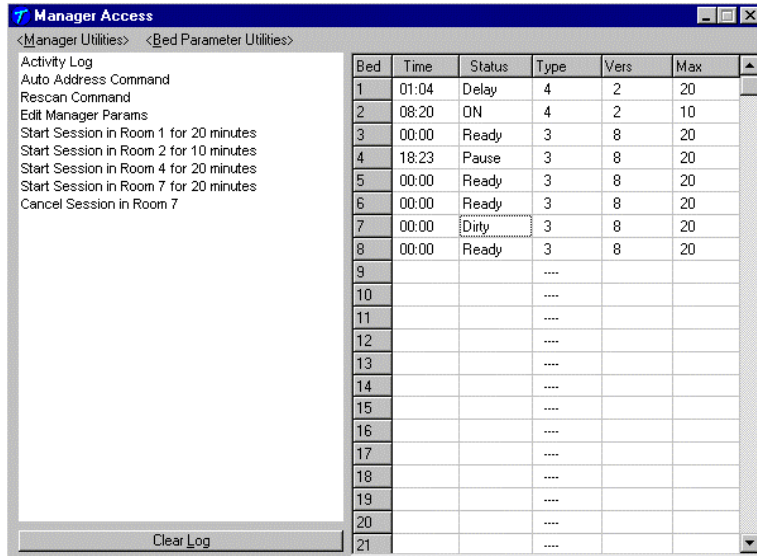
RX and TX show communication between the computer and the T-Max® Mgr. These should be flashing unevenly.

Firmware version is the ROM version stored inside the T-Max® Mgr.

Application is the RAM software version inside the T-Max® Mgr r.

If the boxes below TX and RX do not flash or Firmware version reads 99.99, then there is no communications between the PC and the T-Max® Mgr. Make sure the T-Max® Mgr is connected to the PC and power is applied to the T-Max® Mgr. If there is still no communications, click Close with the left mouse button, click Setup from the ADNET 2000™ window and try another Comm port.

Manager Access Window



6.3.2 Manager Access Screen

The upper left corner of the Manager Access screen shows <Manager Status> and <Bed Parameter Utilities>. These are discussed in Sections 6.3.6 and 6.3.5. The right side shows the beds you have and their statuses.

The left side of the screen is an activity log. This is to aid in trouble shooting. The right side of the screen shows bed status.

Bed - Bed number

Time - current time.

Status - Status if the timer (Ready, On, Pause, Delay, Dirty or Cool)

Type - Type of timer in each room.

Vers - Software version in each timer.

Max - Maximum time for each timer.

6.3.3 Starting a Session.

- 1) Place the mouse in the Time window beside the bed number that you want to start.
- 2) Press the Left mouse button.
- 3) The Start Session window will appear. Enter the bed number you want to start and the desired session time in minutes.
- 4) Click Yes. If you don't want to start a session, click No.
- 5) The session will start and the display will show the bedtime and status.

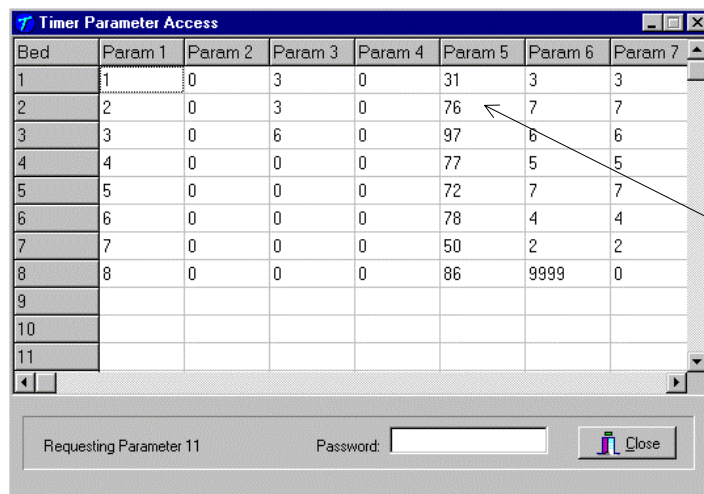
6.3.4 Canceling a Session.

- 1) Place the mouse in the Time window beside the bed number you want to Cancel.
- 2) Press the Left mouse button.
- 3) A cancel session window will appear. If the displayed bed is correct, press Yes. If the displayed bed is not the bed you want to cancel, enter the correct bed number click Yes with your left mouse button. If you don't want to cancel any session, click No.

6.3.5 Getting and Changing Parameters

- 1) Click Bed Parameter Utilities with your left mouse button.
- 2) Click Upload Parameter from Beds. The Timer Parameter Access screen will appear:

Timer Parameter Access Window



Bed	Param 1	Param 2	Param 3	Param 4	Param 5	Param 6	Param 7
1	1	0	3	0	31	3	3
2	2	0	3	0	76	7	7
3	3	0	6	0	97	6	6
4	4	0	0	0	77	5	5
5	5	0	0	0	72	7	7
6	6	0	0	0	78	4	4
7	7	0	0	0	50	2	2
8	8	0	0	0	86	9999	0
9							
10							
11							

Requesting Parameter 11 Password:

- 3) To change a parameter, move the mouse to the window beside Password and click it with your left mouse button. A flashing cursor will appear in the window. Enter the password (see the attached password sheet provided with this manual). As you enter the password, an (*) will appear for each character.

After the password has been entered, place the mouse in the window where you want to change the parameter. For example, if you want to change parameter 5 for bed 2, place the

mouse in the white window below Param 5 and beside 2 as the arrow shows in the Timer Parameter Access window.

- 4) Click the left mouse button.
- 5) A Change Parameter Data window will appear. Enter the value you want to change the parameter to then click OK with your left mouse button. If you don't want to change the parameter value, click Cancel.
- 6) The change parameter window will change the show the new value for that parameter.
- 7) When you are done changing parameters, click Close with your left mouse button.

Table 2 - Parameter Table

Param #	Description	Max #	Default	Notes
1	Address	255	254	Address of timer
2	Beep Mode	1	0	Used for High Pressure beds. The T-Max® 3A will beep 10 seconds half way through the session. 0=disabled, 1=Enabled.
3	Delay Time	10	0	Delay in minutes stored in the T-Max® 3A.
4	Current Sense	1	0	T-Max® Sentry™ Option. 0=Disabled, 1=Enabled.
5	Session Counts	65535	0	Total session counts for T-Max® 3As.
6	Lamp Hours	65535	0	Bulb hours for each bed.
7	Bed Hours	65535	0	How many hours a bed is on.
8	Manual Session Counts	65535	0	Counts the # of sessions T-Max® 3A has run as a stand alone timer. Sessions started from T-Max® Mgr or PC not counted.
9	Clean Room	1	1	0=Clean Room Disabled, 1=Enabled
10*	Manual Lockout*	1	0	0=Stand Alone Enabled, 1=Disabled. Prevents the T-Max® 3A from being an independent timer.
13	Cool Down Mode	10	0	0 = Disabled, 1-10=Enabled. Time delay in minutes allowing bed to cool. New session cannot start until time expires.
15	Fixed Session Counts	65535	0	Counts number of sessions ran through the T-Max® 3A. This value cannot be changed. Used as point of reference.
17	Clean Clear	1	0	0 = Press and hold the Set button for 3-4 seconds to clear the clean room. 1 = Press and release the Set button to instantly clear the clean room.
18	Redisplay	2	0	0=After a session ends and the clean room is cleared, the T-Max® 3A will show a 0. 1=After session ends and the clean room is cleared, the T-Max® 3A will show the last session time entered. 2 = After the session ends and the clean room is cleared, the max. time will show on the T-Max® 3A.
19	TPI	1	0	Third Party interface mode. Must be set when connecting timer to non-T-Max® timing system.
20	External Speaker	1	0	Set to a 1 if connecting an external speaker to a T-Max® 3A. Set to 0 if using speaker on the T-Max® 3A.
21	Pause Mode	1	0	0 = When session is paused, time will continue to count down. 1 = When session is paused, session time will stop counting down.
22	Auto Bed Shut Off	1	0	For T-Max Intercom Systems Only. 0 = When timer is called bed will stay on, 1 = When timer is called, bed will stuff off automatically.

* If Manual Lockout is enabled, the T-Max® 3A cannot operate as a stand-alone timer. In the event of a T-Max® Mgr failure, this parameter cannot be enabled at the T-Max® 3A

6.3.6 Manager Utilities

Click Manager Utilities with your left mouse button. The window will appear with the following options:

Download Program from PC to Manager - Allows you to load the T-Max® Mgr with new software

Edit Manager Setup - Allows you to change T-Max® Mgr Setting for manual use.

Rescan timers - Allows you to have the T-Max® Mgr rescan the timer network

Auto Address - Allows you to Auto Address the entire salon.

6.3.7 Download Program from PC to Manager

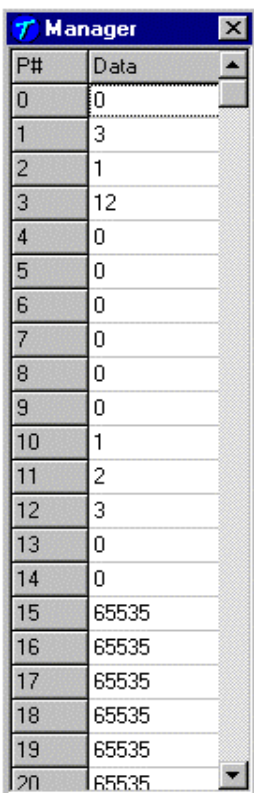
Click Manager Utilities then Download Program from PC to Manager with your left mouse button.

ADNET 2000™ will load the T-Max® Mgr with the latest software. The Activity Log will show Sending 256 bytes to different addresses. After the download is complete a Manager Restart window will appear. The T-Max® Mgr will rescan. A status bar will scroll across the window. Once this is complete, you can start new sessions.

6.3.8 Edit Manager Setup

1) Click Manager Utilities then Edit Manager Setup with your left mouse button.

The Manager screen will appear:



P#	Data
0	0
1	3
2	1
3	12
4	0
5	0
6	0
7	0
8	0
9	0
10	1
11	2
12	3
13	0
14	0
15	65535
16	65535
17	65535
18	65535
19	65535
20	65535

Only P# 1,2,3 and 4 are used. These settings are changed in the T-Max® Mgr for use when the T-Max® Mgr is used manually in the event of a computer failure.

When changes are complete, click the X on the upper right corner of the window with your left mouse button.

6.3.9 Rescan Manager

Click Manager Utilities then Rescan Manager with your left mouse button. The T-Max® Mgr will rescan the timer network.

6.3.10 Auto Address the T-Max® System

Auto Address will allow you to reset the addresses on the timers in the room. This is typically done on initial installation, when adding tanning beds or when you want to change the room numbers in your salon.

Note: Make sure no one is tanning before selecting this option.

1) Click Manager Utilities then Auto Address the T-Max® System with your left mouse button. A window will appear with the following message: Proceed with Auto Address of Entire System? (Make sure there are no active sessions).

2) Click OK with your left mouse button if you want to proceed. Click Cancel if you do not want to auto address the salon.

Once you click OK, the Manager Access screen will disappear and the ADNET 2000™ screen will appear. Each timer in the salon will show a 99 and be sounding an alarm. The T-Max® Manager/Plus LCD display will show Auto Addressing Bed 00. Go to each timer in order you want the salon to be and press the Start/Stop buttons along the way. Each timer will go to a 0. Make sure you press the Start/Stop buttons in order that you want the salon addressed. Go to room 1 first, then room 2, room 3 etc. The T-Max® Mgr LCD display will show Auto Addressing Bed XXX. XXX will be one number higher than the number of beds addressed. Press the Enter button on the T-Max® Manager/Plus keypad.

3) On your computer, press the Start button with your left mouse button. The Manager Access screen will reappear with the new configuration being displayed. The T-Max® Mgr can be controlled via a computer using many third party software packages or ADNET.EXE provided with the T-Max® Mgr.

6.4 ADNET.EXE

This is a DOS program that can be used to control your salon in the event that your PC's hard disk drive fails. To use ADNET.EXE:

Place the diskette in drive A and type the following: **A:** <Press the Enter key>. The prompt will read as follows: **A:\>_**

Type the following: **CD ADNET** <press the Enter key>. The prompt will read as follows: **A:\ADNET>_**

Type the following: **ADNET C?** <press the Enter key>.

The “?” is the COM port number the T-Max® Mgr is connected to on your computer. Refer to the computer's users guide to determine what serial port you are using, then use Table 3 to determine what to type.

Table 3 - Command Lines for Loading ADNET.EXE

Serial Port	Command Line Used
COM1	ADNET C1 <press Enter key>
COM2	ADNET C2 <press Enter key>
COM3	ADNET C3 <press Enter key>
COM4	ADNET C4 <press Enter key>

6.4.1 Installing ADNET.EXE onto the PC's Hard Disk Drive

Place the diskette in drive A and type the following: **A:** <Press the Enter key>. The prompt will read as follows: **A:\>_**

Type the following: **CD ADNET** <press the Enter key>. The prompt will read as follows: **A:\ADNET>_**

Type the following: **Install** <press the Enter key>. ADNET.EXE and all the associated files will be installed to the computer's Hard disk drive in the TMAX directory.

6.4.2 Loading ADNET.EXE as a TSR

A TSR (Terminate Stay Ready) is a program that loads in memory that other programs communicate with to allow you to do certain things. An example of a TSR is a mouse driver for a DOS application. Some programs require ADNET.EXE to be loaded as a TSR to communicate with the T-Max® Mgr. If you don't know if your program requires this, consult your software's manufacturer.

To load ADNET.EXE as a TSR, type the following: **ADNET T C?** <press Enter >

The "?" is the COM port number the T-Max® Mgr is connected to on your computer. Refer to the computer's users guide to determine what serial port you are using, then use Table 4 to determine what to type.

Table 4 - Command Lines for Loading ADNET.EXE as a TSR

Serial Port	Command Line Used
COM1	ADNET T C1 <press Enter key>
COM2	ADNET T C2 <press Enter key>
COM3	ADNET T C3 <press Enter key>
COM4	ADNET T C4 <press Enter key>

Note: Placing this command line in your AUTOEXEC.BAT file on your PC will load ADNET as a TSR every time you turn on your computer. If your PC loads your tanning software when you turn on your computer, you need to place the ADNET command line before the line that loads your tanning software. Consult your computer dealer or computer's manufacturer for instructions on how to add the ADNET command line to your AUTOEXEC.BAT.

6.5 Using ADNET.EXE

From the C:\> prompt, type the following:

CD TMAX <press the Enter key>.

The prompt will appear as follows: **C:\TMAX>_**. Type the following:

ADNET C? <press the Enter key>.

The “?” refers to the serial port number on your computer that the T-Max® Mgr is connected to. Refer to the computer’s user’s guide to determine which serial port you are using then use Table 2 for the proper command line.

The following screen will appear:

Bank	Tan	Delay	Hours	Sessions	Auto	[ESC] Exit	F1 Alt Menu
Salon Systems, Inc. ADNET Utility Program							
Unit #	Time	Status	Type/Version	Max Time			
1).	0.00	READY	15/39	20			
2).	0.00	READY	15/39	30			
3).	0.00	READY	15/38	20			
4).	0.00	READY	3/8	40			
5).	0.00	READY	15/39	30			
6).	0.00	READY	15/39	20			
7).	0.00	READY	3/8	30			
8).	0.00	READY	15/39	20			
9).		-----	Not Present	-----			
10).		-----	Not Present	-----			
11).		-----	Not Present	-----			
12).		-----	Not Present	-----			
13).		-----	Not Present	-----			
14).		-----	Not Present	-----			
15).		-----	Not Present	-----			
16).		-----	Not Present	-----			

ADNET.EXE Main Menu Screen

Display Descriptions

Unit # - Bed Number or address of T-Max® 3A.

Type/Version - T-Max® 3A software version.

Time - Session time, Delay time or Cool Down time remaining.

Max Time - Maximum time programmed into each T-Max® 3A.

Status - Bed Status: “READY”, “ON”, “DIRTY”, ”PAUSE” or “COOL”.

Command Descriptions

Bank - Displays the next 16 beds. Press B

Sessions - Displays how many sessions the timer has run. Press S.*

Tan - Starts a session. Press T.

Auto - Sets the bed to start immediately after delay or places the T-Max® 3A in

Delay - Sets delay for every bed. Press D.

Hours - Displays bulb hours for each bed. Press H.*

ESC - Exits the program. Press the ESC key.

F1 - Switches to Alternate Menu. Press the F1 key.

*If more than one T-Max® Mgr is being used, only the Master T-Max® Mgr can use these functions.

Salon Systems, Inc. ADNET Utility Program

Unit #	Time	Status	Type/Version	Max Time
1).	0.00	READY	15/39	20
2).	0.00	READY	15/39	30
3).	0.00	READY	15/38	20
4).	0.00	READY	3/8	40
5).	0.00	READY	15/39	30
6).	0.00	READY	15/39	20
7).	0.00	READY	3/8	30
8).	0.00	READY	15/39	20
9).		-----	Not Present	-----
10).		-----	Not Present	-----
11).		-----	Not Present	-----
12).		-----	Not Present	-----
13).		-----	Not Present	-----
14).		-----	Not Present	-----
15).		-----	Not Present	-----
16).		-----	Not Present	-----

ADNET.EXE Alternate Menu Screen

Command Descriptions

Rescan - Causes the T-Max® Mgr to rescan. Press R.*

Get Param - Displays values stored for a given parameter. Press G.*

SeNd Param - Changes desired parameters of timers. Press N.*

Load - Loads the MGRPLS1.BIN file to the T-Max® Mgr. Press L.

Version - Displays software version number and updates the computer screen after a configuration change. Press V.

F2 - Displays Main Menu. Press the F2 key.

* If more than one T-Max® Mgr is being used, only the Master T-Max® Mgr can use these functions.

6.5.1 Delay - Entering a delay

1) Press D

2) A window will appear and read as follows:

Existing Delay Time: 3

Enter NEW Delay Time in Minutes ->

Enter the delay time desired followed by the Enter key. You cannot enter a delay time beyond 10 minutes. If you want no delay time, enter 0.

Note: The delay you enter will be for every bed in the salon. This value is not saved to disk.

Every time ADNET.EXE is loaded, the delay defaults to 3 minutes. If you wish to use Infinite Delay, Refer to Section 5.2.1.

6.5.2 Tan - Session Control

Starting a Session

- 1) Press T
- 2) A window will appear and read as follows: Enter the Timer Number ->. Enter the timer number (or bed number) you want to start, followed by the Enter key.
- 3) The next prompt will read as follows: Enter the Session Time in Minutes ->. Enter the time you want the tanning session to last, followed by the Enter key.

Note: If the session time entered is longer than the maximum time programmed into the T-Max® 3A, the session time will default to the maximum time.

If a delay time other than “0” was entered, the Status will read DELAY. A rapidly flashing period will appear on the T-Max® 3A. The light representing that bed on the T-Max® Mgr will go out. The time on the computer screen will be counting down. Once the session starts, the bed will turn on and the flashing period will slow to a rate of once per second. The STATUS will read ON.

Canceling a Session

If at any time you want to cancel a session before the session time expires, press T, enter the bed number, then enter a “0” or “1” for session time.

6.5.3 Bank - Monitoring Beds

When ADNET.EXE is loaded, beds 1 through 16 are displayed on screen. Press B and beds 17 through 32 will be displayed. Continuing to press B will continue to increment beds, 16 at a time. Pressing the Alt and B keys simultaneously decrements the bed numbers being displayed, 16 at a time.

6.5.4 Hours - Bulb Hours

Note: If you are using more than one T-Max® Mgr, this function is only available on the Master T-Max® Mgr.

6.5.4.1 Monitoring Bulb Hours

Note: If you are using more than one T-Max® Mgr, this function is only available on the Master T-Max® Mgr.

- 1) Press H

On the right side of the screen, bulb hours will be displayed for each bed. Press H again and the numbers will disappear.

6.5.4.2 Clearing Bulb Hours

Refer to Section 6.5.9 for clearing Bulb Hours.

6.5.5 Session Counts

Note: If you are using more than one T-Max® Mgr, this function is only available on the Master T-Max® Mgr.

Monitoring Session Counts

Press the S key. Numbers will appear to the right of the screen. These are the session counts for each timer. Press the S key again and the numbers will disappear.

Clearing Session Counts

Refer to Section 6.5.9 for clearing Session Counts.

6.5.6 Auto - Changing the Session Start After a Delay.

1) Press the A key.

2) A window will appear with the following message:

Existing Mode : 1

Enter 1 for Start after Delay or 0 for PAUSE after delay ->.

Note: This is for every bed in the salon. This setting is not saved to disk. Every time you enter ADNET, the AutoStart Mode defaults to 1.

If a 1 is entered, the session will start immediately after the delay time has expired. If a 0 is entered, the bed will pause after the delay time has expired, and the customer must press the Start/Stop button on the T-Max® 3A to turn the bed on. The time for that session will start immediately after the delay time has expired in either case. If the T-Max® Mgr is set to infinite delay, the Auto Start will be ignored (Refer to Section 6.5.11 for setting up Infinite Delay).

6.5.7 Rescan

Rescan allows the T-Max® Mgr to locate all T-Max® 3As. This is needed if a T-Max® 3A is added or subtracted from the system. Press R to start the rescan.

After the T-Max® Mgr has rescanned the system, the numbers on screen will not change. To update the screen, press V. A window with the software version numbers being displayed. Press Enter key and the window will disappear with the screen updated. Rescan will not interrupt active sessions. Rescan will have no effect on Slave T-Max® Mgr's.

6.5.8 Get Param - Monitoring Parameters.

Get Param allows you to check (without changing) the parameters listed in Table 4

Press G. A window will appear with the following message: Enter the Parameter# to get ->. Enter a number from Table 4 followed by the Enter key. The right side of the screen will show the values stored in each T-Max® 3A for the selected parameter.

6.5.9 SeNd Param - Changing Parameters

This function is used to change the parameters in Table 4. If you are using more than one T-Max® Mgr, this function is only available on the Master T-Max® Mgr.

- 1) Press N
- 2) A window will appear with the following message: Enter Security Number ->. Refer to the folded Security Number sheet that was inserted in this manual.
- 3) A window will appear with the following message: Enter the Timer Number ->. Enter the timer number (or bed number) followed by the Enter key.
- 4) The following message will appear: Enter the Parameter# to change ->. Enter the parameter number to be changed from Table 4 followed by the Enter key
- 5) The following message will appear: Enter the Data to Send ->. Enter the desired value followed by the Enter key. If you want to clear a parameter value, such as clearing bulb hours after you have changed the bulbs in the tanning bed, enter a 0.

6.5.10 Load - Sending FLASH1.BIN to T-Max® Mgr.

- 1) Press L
- 2) The following message will appear: Reload NETMGR Program? (y/n)? Press Y.
The window will read as follows:
Stopping Manager, Sending Stop Command
Sending: MGRPLS1.BIN
Sending -> 256 bytes to <address>
File Sent OK
Starting Manager.
Sending: -> 256 Bytes to <address> will scroll, with different address numbers being loaded.
After the file is sent the T-Max® Mgr will rescan.

6.5.11 Manual Parameters

After loading MGRPLS1.BIN in the T-Max® Mgr, the setup parameters inside the T-Max® Mgr may reset. Doing the following can reset these parameters:

- 1) Press X
- 2) A window will appear with the following message: Enter the Manager Delay Time ->. Enter your desired delay time, followed by the Enter key.
- 3) The following message will appear: Enter the Manager Start Mode->. Enter the Auto Start mode you desire followed by the Enter key.

This value is for every bed in the salon. If you enter a 0, after the delay time expires, the session time will start but bed will not energize. The screen will show PAUSE with session time counting down. If a 1 is entered, after the delay time expires, the bed will energize and the screen will show ON. If the AutoStart mode is Set to a 2, then the T-Max® Mgr is set to Infinite Delay. In this mode, the delay set in the T-Max® Mgr and the computer will be ignored, the session time will not start and the bed will not energize until the Start/Stop button is pressed on the T-Max® 3A. The screen will show DELAY with the session time entered, the session time will not count down until the Start/Stop button is pressed on the T-Max® 3A.

4) The following message will appear: Enter the Manager Max Bed Number->. Enter a number that is equal to or higher than the highest address that you have a T-Max® 3A set to, followed by the Enter key.

5) The following message will appear: Enter the Manager Display Mode. Press 0 followed by the Enter key.

Note: The Delay and Auto Start mode will be over-written by the computer's software unless the Auto Start mode is set to 2 (Infinite Delay).

6.5.12 Version

Pressing V displays the ADNET version number, the NETMGR ROM version number, and NETMGR RAM version number. Press the Enter Key to Clear the window.

V is also used to update the screen after a bed has been added or subtracted. After you press R to rescan the network to find the current configuration or L to load the MGRPLS1.BIN, press V to display the software version number. Press the Enter key to clear the window and the new configuration will be displayed.

7 EXPANSION

7.1 Adding Beds

Note: Maximum times for each bed is programmed into the T-Max® 3A at the factory. When ordering the T-Max® 3As, make sure you have the maximum times for each bed.

One T-Max® Mgr will control up to 64 beds. To add beds, simply purchase a T-Max® 3A for each bed you want to add to your salon.

- 1) Wire the T-Max® 3A to the tanning bed and apply power as described in Section 3.3
- 2) Set the address on the T-Max® 3A as described in Section 4.1
- 3) Apply power to the T-Max® Mgr. Set the Maximum Bed Number as described in Section 6.5.11. If you are not using a PC, refer to Section 5.2.

7.1.1 The ADNET-Repeater™ (optional)

If you are installing over 25 tanning beds, you may experience communications errors. If this happens, you may need to add a T-Max® Repeater. The ADNET-Repeater™ connects anywhere in the daisy chain and amplifies the communications signal down the rest of the line. (See Figure F, Section 12.6 and Figure G, Section 12.7).

7.2 Adding T-Max® Mgrs

Up to 8 T-Max® Mgrs can be connected in a salon.

Note: You must have a T-Max® Slave Kit for each additional T-Max® Mgr.

- 1) Remove the back cover off of each Slave T-Max® Mgr.
- 2) Set the address on the P1 jumper on each Slave T-Max® Mgr to an address other than 000 (refer to Figure H, Section 12.8).

Note: 000 is the Master Setting and is the factory default setting. One of the T-Max® Mgrs must be set to address 000. Set each Slave to a slave address as shown in Table 5 under Figure H, Section 12.8. **Each T-Max® Mgr must have a unique address.**

3) Remove both Terminator Jumpers on each Slave T-Max® Mgr (See Figure H, Section 12.8). Replace the backs on each T-Max® Mgr.

4) Connect each T-Max® Slave Kit between the T-Max® Mgrs and the cable going to the first tanning room.

5) Connect the Slave T-Max® Mgr to the T-Connector.

6) Apply power to each Slave T-Max® Mgr on.

7) Apply power to the Master T-Max® Mgr.

Note: Each Slave T-Max® Mgr must be powered up before applying power the Master T-Max® Mgr. If you remove then reapply power to any Slave T-Max® Mgr. you must cycle power to the Master T-Max® Mgr.

8 T-MAX® 3A OVERVIEW

Each T-Max® 3A can individually control a tanning bed, be connected back-to-back for remote front desk control, or be daisy-chained together and controlled by a T-Max® Mgr to control up to 128 beds. Operation is accomplished via front panel controls. The T-Max® 3A comes fitted with a wall plate and fits into a standard, double wide wall box. In the remote single bed configuration, Start/Stop, Clean Room, and Bulb Hours are the only functions available to the T-Max® 3A from the tanning room.

8.1 Connecting To The Tanning Bed

Refer to Section 2.1, Step 4 for connecting the T-Max® 3A to the tanning bed.

8.2 Setting Parameters on the T-Max® 3A

Note: If you are using a T-Max® Mgr and multiple T-Max® 3As, remove power from the T-Max® Mgr. Keep power removed from the T-Max® Mgr until all parameter changes are complete. Refer to Table 1 for Parameter Number Descriptions.

1) Remove power from the T-Max® Mgr.

2) Apply power to the T-Max® 3A. It should show a 9.9 and an alarm should sound.

If it just shows a 0, go to Step 4.

3) Press and hold the Start/Stop and Up Buttons on the T-Max® 3A until a .1 appears on the display. This should take about 5-6 seconds. Release the buttons.

4) Press the Up and Down Buttons until the parameter number that you want is displayed.

5) Press the Start/Stop Button to observe the current value for that parameter.

The Display will show a number with a period in the lower center of the display. The numbers will stop flashing and stay illuminated. The number shown is the current value for that parameter.

For Lamp Hours, Session Counts, etc. the value displayed can be as high as 9999. To display this value, the T-Max® 3A will flash two numbers-three times, then two numbers-three times, pause, two numbers-three times, two numbers-three times, pause, etc. For example, if you are checking lamp hours (Parameter 6) and the display flashes the numbers 53 three times, then 14 three times, pauses then repeats, then the total lamp hours stored in that T-Max® 3A is 5314.

4) Press the Up and Down buttons to change the parameter to the desired value.

If you want to clear the value for that parameter, press the Up and Down buttons at the same time until the display shows “.0”.

5) Press the Start/Stop Button.

The display will show the parameter number you just changed and a solid period in the lower center of the display. You may now change another parameter by pressing the Up and Down buttons until the parameter you want displayed. Repeat Steps 2-4.

6) To exit the Parameter mode press and hold both the Up and Down buttons until the display shows a 0 with no periods displayed.

8.2.1 Setting the Address

Refer to Section 4.1 on setting the address on the T-Max® 3A manually.

8.2.2 Setting Delay Time.

Note: If you are using the T-Max® Mgr, delay does not need to be set on the T-Max® 3A.

1) Press and hold the Start/Stop button and apply power to the T-Max® 3A. A .1 will appear on the display. Release the Start/Stop button.

2) Press the Up and Down Button until a .3 is displayed.

3) Press and release the Start/Stop button.

A number will appear on the display and be flashing. A period will be illuminated in the center of the display. This is the current delay time.

4) Press the Up and Down Button until the desired delay time is displayed.

The highest delay time that can be set on the T-Max® 3A is 10 minutes. If you want no delay time, set the display to 0. If you set the Delay Time to 0, the session time will start immediately after the Start/Stop button is pressed.

5) Press the Start/Stop button until a .3 is displayed. The 3 will not flash.

To exit Parameter Mode, press and hold the Up and Down button until a 0 is displayed.

9 IN-ROOM SINGLE BED CONTROL

9.1 Starting a Session

If you are using a T-Max® Mgr, and you want to use the T-Max® 3As manually, you must unplug power from the T-Max® Mgr then unplug power to the T-Max® 3A then plug it back in.

Power must stay removed from the T-Max® Mgr while the T-Max® 3A is being used independently,

- 1) Press the Up or Down Buttons on the T-Max® 3A until the session time is displayed. If the display shows a 0 and you want to go to the maximum time, press the down button.
- 2) Press and release the Start/Stop button to start the session.

If a delay other than 0 is entered, the delay will count down. A period on the lower right corner of the display will flash rapidly. When the session starts, the period will flash at a once per second rate.

9.2 Pausing a Session

To pause sessions press the Start/Stop button. The flashing period on the lower right corner of the display will stop flashing. The session time will continue to count down.

To restart the session, press the Start/Stop button on the T-Max® 3A. The period on the lower right corner of the display will resume flashing.

9.3 Canceling a Session.

To cancel sessions press the Start/Stop button to pause the session then press the Up button. The display will show a solitary 0.

10 REMOTE SINGLE BED CONTROL

A T-Max® 3A can be used to control another T-Max® 3A. This is ideal for small salons that are not using a T-Max® Mgr. Two T-Max® 3As are required for remote single bed control.

10.1 WIRING

Place one T-Max® 3A in the tanning room and one at the desired remote location. Connect the 9V @ 200mA power supply to the power in on the back of each T-Max® 3A. Plug each power supply into a 120VAC outlet (refer to Figure A, Section 12.1). Connect the T-Max® 3A in the tanning room to the tanning bed as described in Section 2.1, Step 4.

Run the provided modular cable from the tanning room to the remote T-Max® 3A. Connect the modular cable to one of the RJ-22 ports on each T-Max® 3A.

10.2 CONFIGURATION

Set the address on the T-Max® 3A in the tanning room to “1”, and the address on the T-Max® 3A at the front desk to “0” as described in Section 4.1. Disconnect the modular cables when setting the addresses on both T-Max® 3As.

Use the Front Desk T-Max® 3A to set the Delay as described in Section 8.2.2. Any delay time set on the T-Max® 3A in the tanning room will be ignored.

10.3 SESSION CONTROL

10.3.1 Starting a session

1) Press the Up (or Down) Button on the T-Max® 3A at the front desk until the session time is displayed.

2) Press the Start/Stop button on the front desk T-Max® 3A to start the session.

If a delay other than 0 is set, the delay will count down. A period on the lower right corner of the display will flash rapidly. When the session starts, the period will flash at once per second rate. If there is no delay entered, the session will start immediately.

10.3.2 Pausing During the Session

To pause the session press the Start/Stop button on the T-Max® 3A in the tanning room. The flashing period on the lower right corner of the display will stop flashing and stay illuminated. The session time will continue to count down and reflect the remaining session time. To restart the session, press the Start/Stop button on the T-Max® 3A in the tanning room. The period will continue flashing.

10.3.3 Canceling a Session

Press the Start/Stop and Up buttons on the T-Max® 3A at the front desk at the same time.

11 OTHER FEATURES and OPTIONS

11.1 Clean Room

Once the session time has elapsed, the display will show two solid periods only. This is an indication that the room needs to be cleaned. To clear the clean room indication, press and hold the Up button on the T-Max® 3A in the tanning room until the two periods disappear and a “0” appears. To disable the clean room feature, set parameter 9 to a 0 (Refer to Section 5.2.6 if you are using the T-Max® Mgr manually, Section 6.5.9 if you are using ADNET, or Section 8.2 if you want to disable Clean Room at the T-Max® 3A).

If the Clean Room and Cool Down Modes are enabled, the clean room will be displayed ADNET will show Dirty, but the Cool Down time will be shown counting down. If a room is cleaned before the cool down time has elapsed or if the clean room is disabled, a solid period will be displayed on the lower center on the T-Max® 3A and the T-Max® Mgr. The ADNET screen will show Cool with the cool down time counting down. You cannot start a session until the cool down time has elapsed.

11.2 Cool Down Mode

Cool Down mode is used for beds that require a time to cool down before the next session can be run. High-pressure beds primarily use this. While the T-Max® 3A is in Cool Down Mode, a session can not be run until the cool down time has expired.

To enable Cool Down Mode, set parameter 13 to the time in minutes you want the cool down time to last. Setting parameter 13 to 0 disables Cool Down Mode. (Refer to Section 5.2.6 if you are using the T-Max® Mgr manually, Section 6.5.9 if you are using ADNET, or Section 8.2 if you want to disable Clean Room at the T-Max® 3A)

After the session ends, the T-Max® 3A will go into Cool Down Mode. A single period will be displayed on the T-Max® 3A and the T-Max® Mgr for the duration of the cool down time. ADNET will show Cool with the time counting down. If clean room is also enabled the clean room will be displayed. ADNET will show Dirty, but the Cool Down time will be shown counting down. If the room is cleaned before the cool down time has elapsed or if the clean room is disabled, a solid period will be displayed on the lower center on the T-Max® 3A and the T-Max® Mgr. The ADNET screen will show Cool with the cool down time counting down. You cannot start a session until the cool down time has elapsed.

11.3 T-Max® Monitors (Optional)

The T-Max® Monitors are devices that allow the salon owner to check the status of all the beds at any place in the salon. Contact your dealer for these options.

The **T-Max® Monitor** has 64 dual colored lights to allow the salon personnel to check the status of up to 64 beds at a glance. Color codes indicate the status of each bed. The T-Max® Monitor can be connected anywhere in the T-Max® Series.

The **T-Max® Monitor/Plus** has 16 displays showing remaining session time. Multiple T-Max® Monitor/Plus's can be connected for large salons. The T-Max® Monitor/Plus can be connected anywhere in the T-Max® chain. You can connect them at the front desk if you want to glance over and see remaining session time, or you can place them anywhere else in the salon so the cleaning staff can see how much session time is remaining for each room.

11.4 T-Max® Sentry™ (Optional)

The T-Max® Sentry™ is a current sensing device that monitors the tanning bed for a malfunction. If you are not using a T-Max® Mgr, the T-Max® 3A must be programmed with this option enabled at the factory. Contact your dealer for this option.

Note: Remove power from the tanning bed and the T-Max® 3A when installing this option. We recommend that a licensed electrician installs this option.

- 1) Attach the two wires on the T-Max® Sentry™ to the "Sensor" screw terminals on the rear of the T-Max® 3A (refer to Figure B, Section 12.2 and Figure C, Section 12.3).
- 2) Find a load carrying wire on the tanning bed (not the wire connected to the relay on the T-Max® 3A). Run that wire through the center of the T-Max® Sentry™ (refer to Figure C, Section 12.3).

If the tanning bed draws less than 10 AMPS, wrap the wire around the T-Max® Sentry™ one time (refer to Figure D, Section 12.4). If the bed remains on after a session ends, or if the bed did not energize after a session has started an error will appear on the T-Max® 3A and an audible alarm will sound.

If you are using a computer, refer to Section 6.5.9 and set parameter 4 to a 1 for the bed that you are enabling the T-Max® Sentry™ option. If you are using the T-Max® Mgr manually, refer to Section 5.2.6 on how to send parameters manually.

11.5 High Pressure (Single-Sided) Beds

The T-Max® 3A has an alarm that will beep for 10 seconds half way through the session informing the customer to turn over. If you are not using a T-Max® Mgr, this option must be enabled at the factory.

If you are using a computer, refer to Section 6.5.9 and set parameter 2 to a 1 for the bed that you are enabling the Mid-Session Flip alarm. If you are using the T-Max® Mgr manually, refer to Section 5.2.2 on how to send parameters manually.

11.5.1 Installing External Speaker (Optional)

If the speaker on the T-Max® 3A is not loud enough, a T-Max® Speaker that connects to the T-Max® 3A is available. To install the T-Max® Speaker do the following. See Figure B Section 12.2 for J6 location and J99 and J100 locations and jumper positions.

- 1) Connect the cable on the T-Max® Speaker to the J6 on the back of the T-Max® 3A
- 2) Place the Jumper on J100 to pins 2 and 3 on the back of the T-Max® 3A
- 3) Set Parameter 20 to a 1 (Refer to Section 5.2.2 if you are using the T-Max® Mgr/ Plus manually, Section 6.5.9 if you want to use ADNET or Section 8.2 if you want to enable this function at the T-Max® 3A).

11.6 Connecting a Remote Push Button to the T-Max® 3A (optional)

A remote push button can be connected to the T-Max® 3A to start sessions. **This option is a special modification and must be added at the factory when ordering the T-Max® 3A!**

Connect the wires from your external push button circuit to the “EXT START” Screw terminals on the back of the T-Max® 3A. Place a jumper on J100-pins 2 & 3 (See Figure B, Section 12.2 for jumper locations. See Figure H Section 12.9 for an example of an External Push Button circuit).

When the external push button is pressed, 5 or 24 VAC must be applied to the Ext. Start screw terminals on the back of T-Max® 3A. If you are providing 24V, remove jumper J1.

To start a session, press the Up or Down button on the T-Max® 3A to set the time, then when ready, press the Remote push button instead of the Start/Stop button on the T-Max® 3A.

11.7 CEB™ - The Wireless Connection (Optional)

The CEB™ allow you to connect the T-Max® Series with out having to run additional wires through your walls in your salon.

The CEB™ allows you to connect the T-Max® Series without running modular cables through your walls. Simply purchase a CEB™ for each T-Max® 3A the T-Max® Mgr. Connect the T-Max® 3As to the beds and apply power as described in this manual and connect a short modular cable between each T-Max® 3A and a CEB™, and plug the CEB™ into a standard 110VAC

outlet. Connect the T-Max® Mgr to a CEB™ at the front desk and plug that CEB™ into a standard 110 outlet. Apply power to the T-Max® Mgr. Using the power lines in you building, the T-Max® Mgr can communicate with each T-Max® 3A. You still have all great features of a wired T-Max® Series. Think of the costs you will save on electricians installation time.

If you have a T-Max® Series connected and are adding new beds, you don't have run cables. Simply purchase a CEB™ to connect to the last T-Max® 3A in the current T-Max® Series and purchase a CEB™ and T-Max® 3A for each bed you add.

11.8 T-Max® Enclosure (Optional)

The T-Max® Enclosure is a metal box that connects to a T-Max® 3A so that they can either be hung on a wall or set on a table. Teardrop holes on the back of the T-Max® Enclosure allow for easy installation.

The T-Max® Enclosure is slanted to make the T-Max® 3A push buttons and display easy to access and read. The T-Max® 3A can fit so that it is slanted up or down. Slanted up is ideal for setting the timer on a desk. Slanted down is great for hanging the T-Max® 3A on a wall.

To install the T-Max® 3A to the T-Max® Enclosure, first run the cable through the wire holes on the T-Max® Enclosure and connect them to the T-Max® 3A as described in Section 3.3. Connect the grommets to hold the wires in tight. Plug any unused holes with the provided plastic plugs. Connect the T-Max® 3A to the T-Max® Enclosure using the four screw provided with the T-Max® 3A.

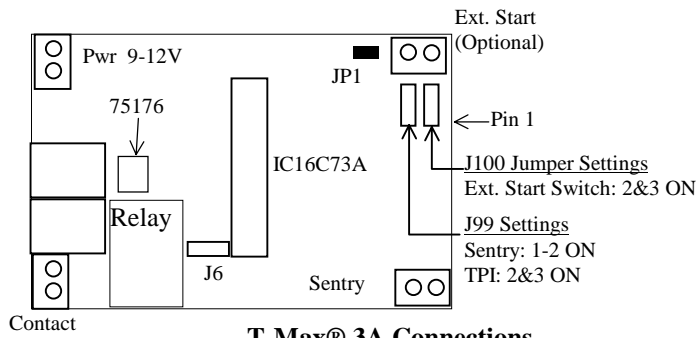
12 FIGURES

12.1 Figure A - Front View Of The T-Max® 3A

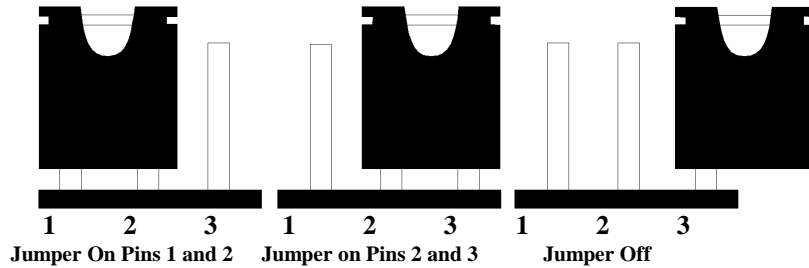


T-Max® 3A

12.2 Figure B - Rear View Of T-Max® 3A Circuit Board

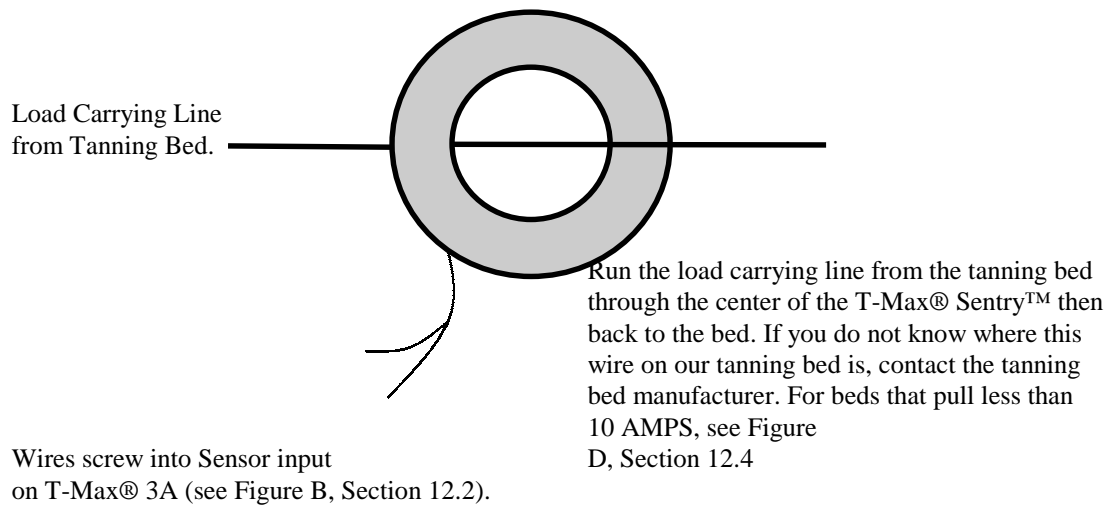


T-Max® 3A Connections

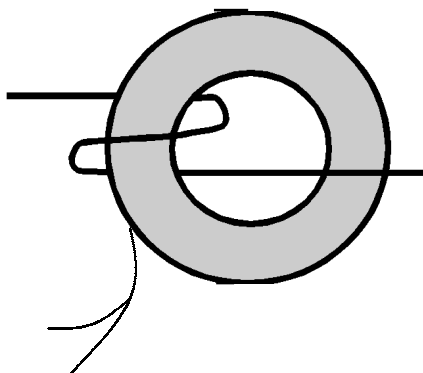


T-Max® 3A Connections

12.3 Figure C - Connecting The T-Max® Sentry™



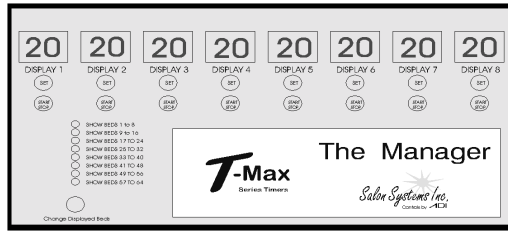
12.4 Figure D - Connecting To Lower Current Beds



For beds that pull less than 10 AMPS, wrap the wire around the T-Max® Sentry™ one time.

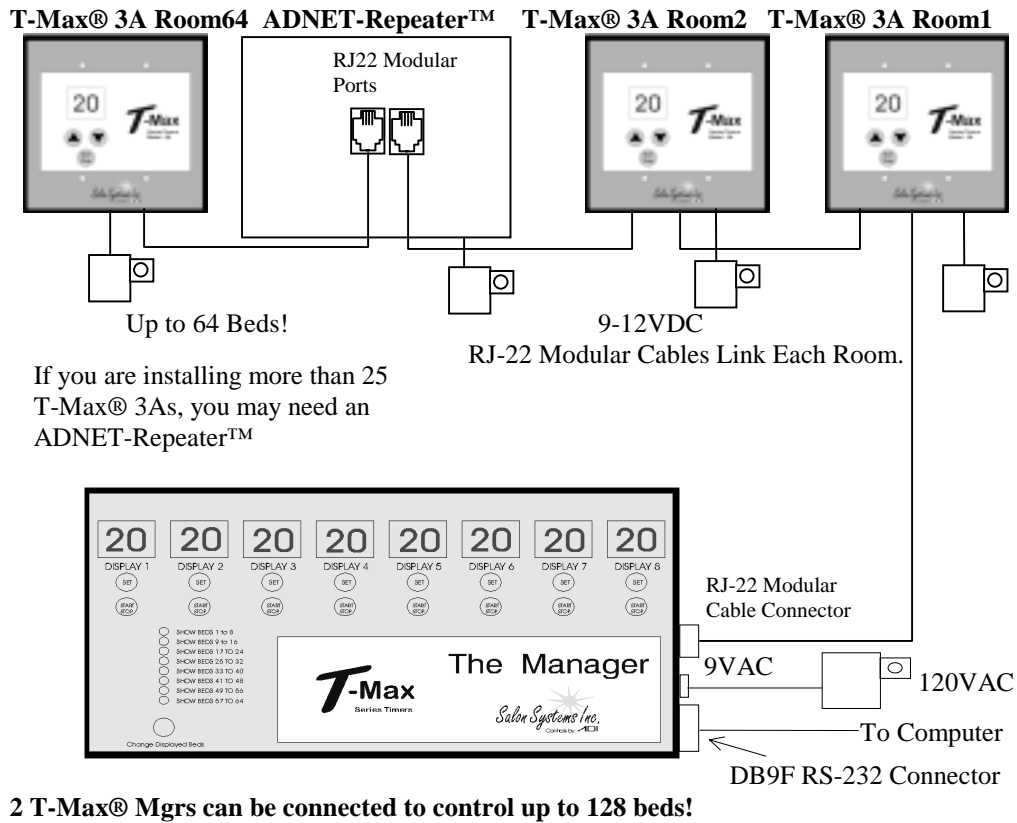
The T-Max® Sentry™

12.5 Figure E - The T-Max® Manager

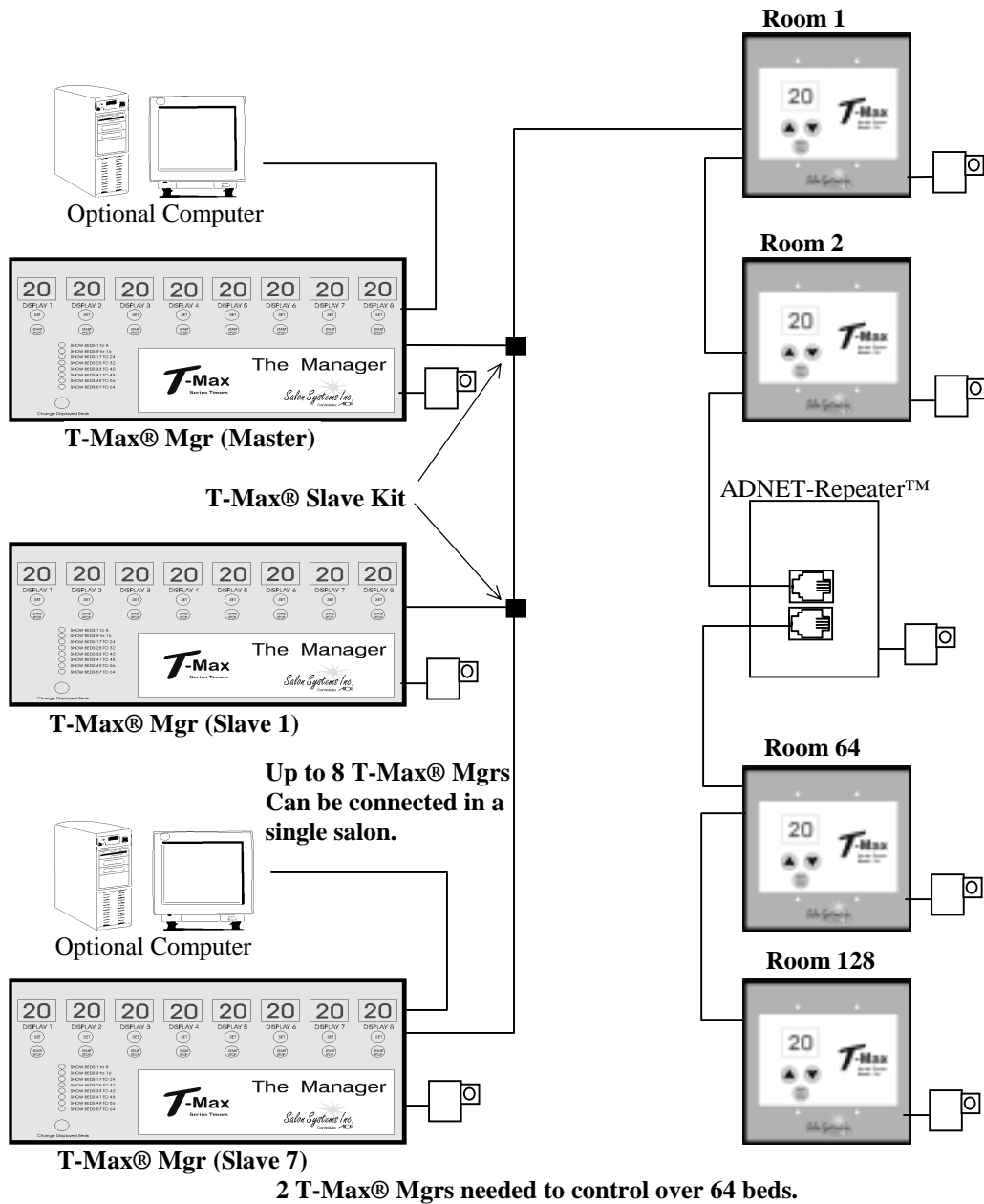


Front View of the T-Max® Mgr

12.6 Figure F - Connecting The T-Max® Series

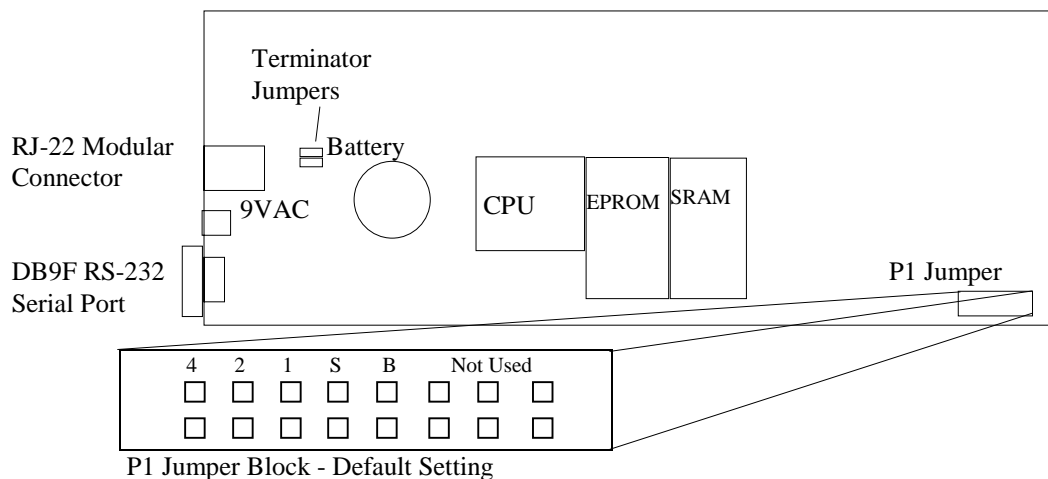


12.7 Figure G - Multiple Configurations



Connect Multiple T-Max® Mgrs, Computers, and up to 128 Beds!

12.8 Figure H - T-Max® Mgr Jumper Configurations



Rear View of T-Max® Manager PCB

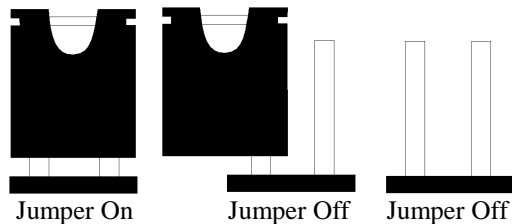
S - Optional Security Switch

B- Bank Jumper. Off - Beds 1-64 Displayed; On Beds 65-128 Displayed.

4,2,1 - T-Max® Mgr Address

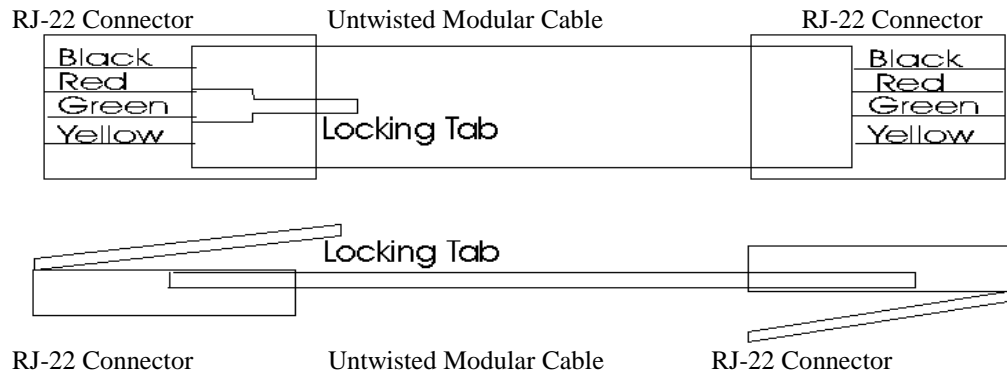
Table 5 - T-Max® Mgr Address Jumper Settings

4	2	1	Description
OFF	OFF	OFF	Master (Default)
OFF	OFF	ON	Slave 1
OFF	ON	OFF	Slave 2
OFF	ON	ON	Slave 3
ON	OFF	OFF	Slave 4
ON	OFF	ON	Slave 5
ON	ON	OFF	Slave 6
ON	ON	ON	Slave 7



Jumper Positions

12.9 Figure I - Modular Cable Pinouts



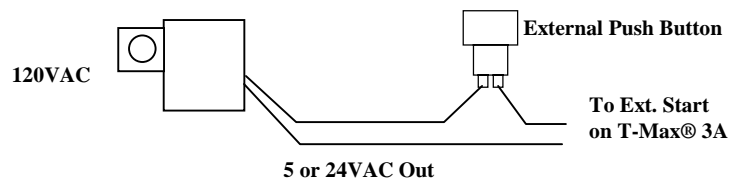
Use this diagram if you are making your own cables

IMPORTANT!!

Cutting the modular cables provided with the T-Max® 3As voids the warranty on your T-Max® Series. If you need longer cables, please contact your dealer. If the cable provided is too long, simply roll it up in the wall.

Note: If you are making your own cables, you will need a tool for connecting RJ-22 connectors. Call Techni-Tool @ 1-800-832-4866 and ask for part number 702ST019.

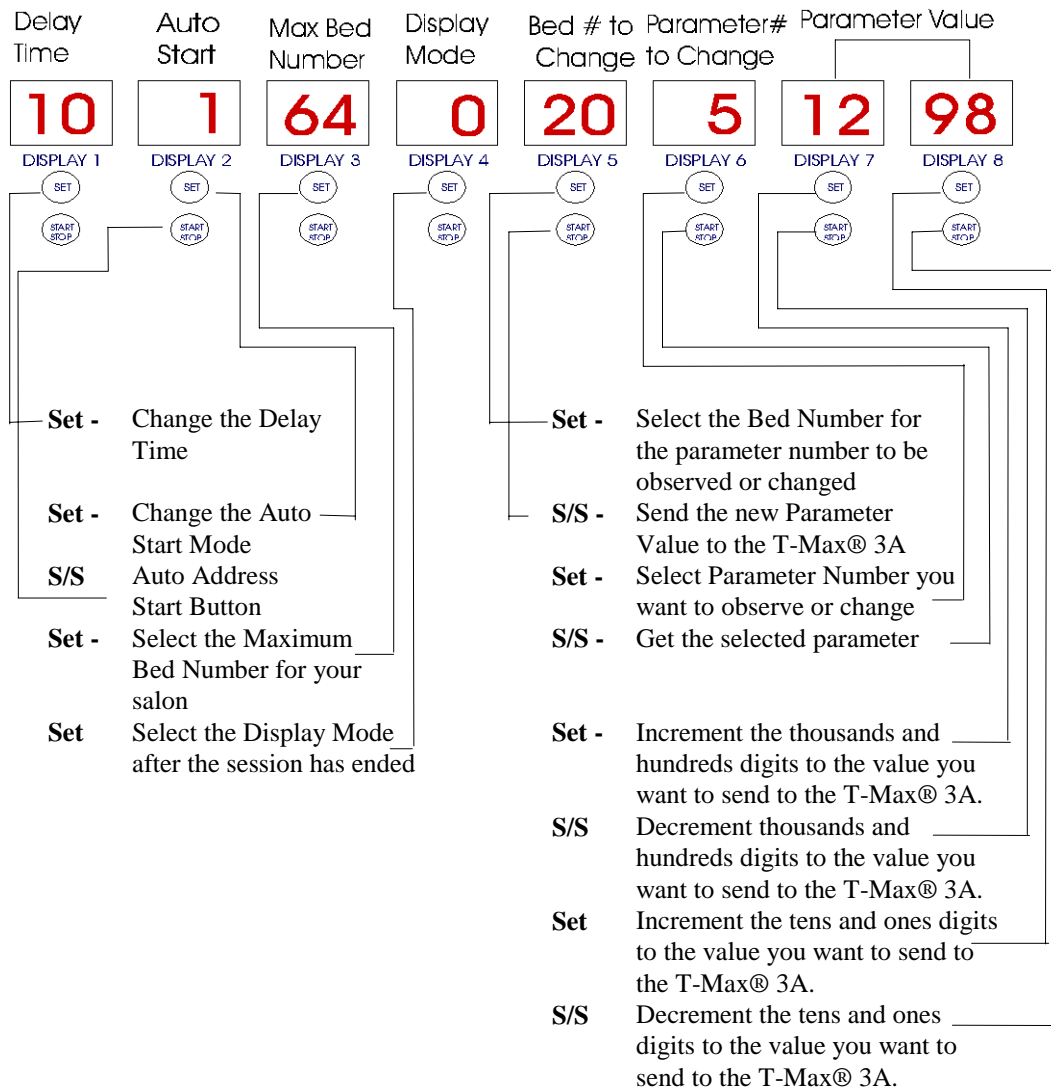
12.10 Figure J - Example Of An External Push Button Circuit



The T-Max® 3A can be ordered with an external push button option. When 5 or 12Volts is applied to the External Start input on the T-Max® 3A while it is in Delay, the bed will be energized with out having to press the Start/Stop button. Above is an example of an push button circuit.

12.11 Figure K - Initial Setup Display

T-Max® Mgr Displays in Parameter Mode



S/S = Start/Stop Buttons

Initial Setup Display Descriptions for Manual Operation Only

13 TROUBLE SHOOTING

The T-Max® Series has been designed for years of trouble free service. However, if a problem does arise, please follow the following trouble shooting steps before calling technical support.

13.1 Trouble Shooting.

1) No Lights Illuminated on the T-Max® Mgr

Make sure that the transformer is plugged into the wall and into the power input on the T-Max® Mgr. Try plugging the T-Max® Mgr into a different outlet. If you are using a surge suppresser or UPS backup system, try plugging the T-Max® manager directly into the wall outlet. Check the circuit breaker in your building to make sure it's on. Use a voltmeter to measure the voltage on the transformer on the end which connects to the T-Max® Mgr. It should read 9VAC.

2) The T-Max® Mgr will not turn on any beds and the display on the T-Max® Manager has strange characters displayed.

This is an indication the program loaded in the T-Max® Mgr is lost or has been corrupted. From the C:\> prompt, type the following: ADNET C1. Once the ADNET Utility program is on your computer screen, press L. Then press Y followed by the Enter key.

3) One or more of the displays on the T-Max® Mgr shows two dashes where a bed should be displayed.

Make sure power is applied and the modular cable is connected to each T-Max® 3A. Check the Maximum bed number setting on the T-Max® Mgr. The maximum bed number should be set to the same address as the T-Max® 3A with the highest address (refer to Section 5.2). Cycle power on the T-Max® Mgr. The T-Max® Mgr will rescan the network. Make sure each T-Max® 3A has a unique address. If there are still some rooms not showing on the T-Max® Mgr that should be there, swap the T-Max® 3A and transformer with one that is working.

4) When power is applied to the T-Max® Mgr, two show where a bed should be.

Check the Maximum Bed Number setting on the T-Max® Mgr (refer to Section 5.2). This value should be the same as or higher than the T-Max® 3A with the highest address. Make sure that power is applied and modular cables are connected to each T-Max® 3A. Try a new modular cable between the last T-Max® 3A displayed and the first T-Max® 3A that does not show on the T-Max® Mgr in the daisy chain. If you don't have a spare cable, swap the cable between the last T-Max® 3A that appears on the T-Max® Mgr and the first T-Max® 3A that does not appear on the T-Max® Mgr with a modular cable that is connected between two T-Max® 3As that appear on the T-Max® Mgr display. If the problem follows, the modular cable is either bad or wired incorrectly. Check the modular cable pinouts on the defective cable (refer to Section 12.9, Figure I). If the problem does not follow, swap the first T-Max® 3A that does not appear on the T-Max® Mgr in the daisy chain with one that does. If the problem follows, return the defective T-Max® 3A for repair. If the problem does not follow, swap the last T-Max® 3A that appears on the T-Max® Mgr with one of the other T-Max® 3As that appears on the T-Max® Mgr. If none of these steps isolates the problem, call your dealer for support.

5) After running Rescan in ADNET, the screen does not show the beds added or subtracted.

Press V. A window will appear displaying the software versions. Press V again and the windows will disappear with the correct configuration.

6) When running ADNET C1, the computer beeps, the screen reads communication error and all 128 beds show 0.00 time and Status reads 255.

This means that ADNET.EXE cannot locate the T-Max® Mgr. Make sure serial cable is connected to the computer and the T-Max® Mgr. Press the ESC key to exit ADNET. This will place a C:\> on screen. Make sure there is power to the T-Max® Mgr. If it still does not work, determine which serial port the T-Max® Mgr is connected to. This will be in the computer's literature. If you cannot determine which port you are connected to, type the following: ADNET C2 <Enter>, then ADNET C3 <Enter>, then ADNET C4. <press the Enter key>. If you see the screen shown in Section 6.2, the computer is communicating with the T-Max® Mgr. If none of these command lines work, try another serial port cable. Try another serial port.

7) The Slave T-Max® Mgr does not show any beds.

Check and make sure the modular cable is connected to the Slave T-Max® Mgr. Recycle power to the Master T-Max® Mgr. Check to make sure the address jumper is not conflicting with any other T-Max® Mgrs (each T-Max® Mgr must have a unique address, refer to Section 7.2, and Section 12.8 Figure H).

8) The T-Max® Manager will not start beds, and the light beside “Show beds 57-64” is illuminated and will not move. The displays show 1,2,3,4,5,6,7,8.

This is an indication that the T-Max® Manager has lost its program. Connect the T-Max® Manager to a serial port on your PC. Place the T-Max® Utilities diskette in drive A on your computer. If you are running a tanning software program, completely exit the program. If you are running Windows® 95, go to the DOS prompt. Type the following:

1) A: <press the Enter key>

2) ADNET <press the Enter key>

A blue screen will appear and show either all beds not present, or show the status of some beds.

3) Press L

4) A window will appear asking you if you are sure you want to reload the software into the T-Max® Manager.

The screen will show sending bytes to various addresses. After about two minutes, the T-Max® Manager will rescan. The T-Max® Manager will then rescan.

After the T-Max® Manager is loaded, it may only show bed 1. If this is the case, do the following:

1) Type X. The screen will prompt you for the delay time. Type the delay time followed by the Enter Key.

2) The screen will prompt you for the T-Max® Manager Start Mode. Type 1 followed by the Enter Key.

3) The screen will prompt you for the Maximum Bed Number, enter the highest room number.

4) The screen will prompt you for the display mode. Enter 0 followed by the Enter key. The window will disappear.

5) Press R. The T-Max® Manager will rescan and look for all your beds.

6) After 10 seconds, press V. A window will appear. Press the Enter key. The screen will then show your beds.

9) When checking Lamp Hours (or any parameter) on the T-Max® Mgr, Displays 7 and 8 show EEEE. Why?

If you are using the T-Max® Mgr manually, check Display 5. If the number on Display 5 does not equal a bed you have, press the Set button under Display 5 until a number is displayed in Display 5 that is equal to a bed number you have. If you are using more than 1 T-Max® Mgr, you can only check and change parameters from the Master T-Max® Mgr. Cycle power on the T-Max® Mgr and watch display 7. After 1,2,3,4,5,6,7,8 momentarily show on the displays, Displays 7 and 8 will momentarily show numbers. If Display 7 shows a number other than a 0, this is the Slave T-Max® Mgr, and you need to go to the Master T-Max® Mgr. EEEE can also mean that the value stored in the T-Max® 3A is higher than 9999.

10) When checking Lamp Hours (or any parameter) from ADNET, 65535 shows for each bed. Why?

This is an indication that you are checking parameters from a Slave T-Max® Mgr. Cycle power on the T-Max® Mgr and watch display 7. After 1,2,3,4,5,6,7,8 momentarily show on the displays, Displays 7 and 8 will momentarily show numbers. If Display 7 shows a number other than a 0, this is the Slave T-Max® Mgr, and you need to go to the Master T-Max® Mgr.

11) After reloading the T-Max® Mgr (pressing L in ADNET.EXE), the T-Max® Mgr only reads bed 1.

Refer to Section 6.5.11 and Set the Maximum Bed number to the correct value..

13.2 Error Codes

Use the following table to determine the cause and possible solutions to error codes.

Error T-Max® 3A	Codes T-Max® Mgr	Description	Possible Solution
N/A	E0	Unrecognized Parameter	Load the T-Max® Manager with the newest version of software.
91	E1	EEPROM Error - On power up, BIOS detects error.	<ol style="list-style-type: none"> 1) Cycle power on T-Max® Mgr 2) Check parameters on T-Max® 3A. 3) If error occurs more than three 3 times, return T-Max® 3A for service.
92	E2	Current Sense Error - Current Off Session has started but bed is off.	<ol style="list-style-type: none"> 1) If you are not using a T-Max Sentry, set parameter 4 to 0. <p>See if bed is off or illuminates momentarily.</p> <p>If bed is off</p> <ol style="list-style-type: none"> 1) Check power to bed. 2) Check outlet bed is plugged into. 3) Check circuit breaker 4) Swap T-Max® 3A with one that is working. <p>If bed illuminates momentary:</p> <ol style="list-style-type: none"> 1) Make sure T-Max® Sentry™ is connected properly (refer to Section 11.3). 2) Have electrician check beds current draw. If the bed draws less than 10AMPS, wire from the bed needs to be wrapped around the T-Max® Sentry™ one time (refer to Section 11.3).
93	E3	Current Sense Error - Current On Session has expired but bed remains on.	<p>Check to see if bed is on or off.</p> <p>If bed is on:</p> <ol style="list-style-type: none"> 1) Swap T-Max® 3A with one that is working 2) Check bed for proper operation. <p>If bed is off</p> <ol style="list-style-type: none"> 1) Have electrician check the current draw on bed. If fans drawing <5AMPS, wrap wire from bed around the T-Max® Sentry™ one time (refer to Section 11.3)
94	E4	Max Time Error - T-Max® 3A reporting wrong Max time.	<ol style="list-style-type: none"> 1) Recycle power to the T-Max® 3A. 2) Replace the T-Max® 3A.
N/A	E6	Checksum Error - T-Max® Mgr has received a bad value from T-Max® 3A	<ol style="list-style-type: none"> 1) Recycle power on both the T-Max® Mgr and T-Max® 3A. 2) Make sure a terminator is connected to the last T-Max® 3A in the T-Max® network. 3) Swap the T-Max® 3A with one that is working.
N/A	E7	Time Out Error - The T-Max® Mgr did not receive the correct information from the T-Max® 3A	<ol style="list-style-type: none"> 1) Make sure 9V transformer powering T-Max® 3A is plugged in to 120VAC outlet. 2) Swap transformer with one that is working. 3) Check modular cable to make sure it has not been disconnected. Replace modular cable. 4) Swap T-Max® 3A with one that is working.

14 INDEX

Adding Beds, 28

ADNET 2000™

- Auto Start, 16
- Canceling a Session, 18
- Com Port Selection, 15
- Comms Status Screen, 16
- Creating a Shortcut, 13
- Delay, 16
- Getting and Changing Parameters, 18
- Infinite Delay, 16
- Installing, 12
- Loading New Software into the T-Max® Mgr, 20
- Manager Utilities, 19
- Running, 16
- Setting Up T-Max®Mgr, 20
- Starting a Session, 18

ADNET.EXE

- Auto Start, 26
- Changing Parameters (SeNd), 26
- Changing T-Max® Mgr Settings Using X, 27
- Function Key Descriptions, 24
- Installing, 22
- Load, 27
- Loading as a TSR, 22
- Rescan, 26
- Session Counts, 26
- Using, 22

ADNET-Repeater™, 5, 28, 38

Auto Addressing

- See Quick Installation.

Auto Start

- Manual Setup, 9
- Using ADNET, 26
- Using ADNET 2000™, 16

Bulb Hours

- Manual - See Parameters.
- Using ADNET, 18, 25

Cable Pinouts

- See Modular Cable Pinouts.

Canceling Sessions

- Manually, 12
- Using ADNET, 25

- Using ADNET 2000™, 18
- Using as an Independent timer, 31

CEB, 5, 34

Clean Room, 12

- Clearing, 32
- Disabling - See Parameters.

Computer Operation

- ADNET, 21
- ADNET™ 2000, 16

Cool Down Mode, 32

Delay

- Manual Setup, 9
- Using ADNET, 24
- Using ADNET 2000™, 16

Display Mode

- Manual Setup, 10

Error Codes, 45

Expanding Your Salon – See Expansion, 28

External Push Button Option, 34, 41

Installation

- ADNET 2000™, 12
- ADNET.EXE, 22
- Quick Installation, 6
- T-Max® 3A with T-Max® Mgr, 7
- T-Max® Mgr, 7

Jumpers

- T-Max® 3A, 36
- T-Max® Manager, 40

Lamp Hours

- See Bulb Hours.

Load, 27

Loading New Software into the T-Max®

Mgr

- Using ADNET.EXE, 27
- Using ADNET™ 2000, 20

Maximum Bed Number

- ADNET 2000™, 20
- Manual Setup, 9
- Using ADNET, 27

Modular Cable Pinouts, 41

Parameters

- Changing and Getting Manually, 10
- Changing and Getting Using ADNET, 26
- Entering Parameter Mode, 9

- Getting and Changing Using ADNET 2000™, 18
- Parameter Table, 11
- Pausing a Session**, 12, 31
- Quick Installation**, 6
- Rescan**
 - Using ADNET, 26
 - Using ADNET 2000™, 21
- Session Counts**
 - Manual - See Parameters.
 - Using ADNET, 26
 - Using ADNET™ 2000, 18
- Specifications**, 5
- Starting Sessions**
 - Manually Using the T-Max® Mgr, 11
 - Using ADNET, 25
 - Using ADNET 2000™, 18
- T-Max Speaker**, 4
- T-Max® 3A**
 - Adding, 28
 - Canceling Session, 31
 - Circuit Board Connections, 36
 - Components, 4
 - Connecting to tanning bed, 6
 - Diagram, 36
 - External Push Button, 34, 41
 - Manual, 29
 - Manual Installation, 7
 - Pausing Session, 31
 - Setting Delay Manually, 30
 - Setting Parameters Manually, 29
 - Setting the Address Manually, 7

- Specifications, 5
- Using as an Independent timer, 30
- T-Max® Enclosure**, 4, 35
- T-Max® Manager**
 - Adding T-Max® Mangers, 28
 - Circuit Board, 40
 - Components, 4
 - Connecting to a Computer, 7
 - Diagram, 38
 - Going From Computer to Manual Control, 9
 - Manual Installation, 7
 - Manual Set Up, 8, 42
 - Setting the Address, 28, 40
 - Specifications, 5
 - Starting Sessions Manually, 11
- T-Max® Mgr**
 - Manual Set Up ADNET.EXE, 27
- T-Max® Monitor**, 5, 33
- T-Max® Monitor/Plus**, 5, 33
- T-Max® Sentry™**, 4, 33, 37
- T-Max® Slave Kit**, 4, 28
- T-Max® Speaker**, 34
- T-Max®3A**
 - Enclosure, 4, 35
 - RemoteSingleBedControl-UsingoneT-Max®3AtocontrolanotherT-Max®3A., 31
- Trouble-Shooting**, 43
- Wiring**, 6, 7, 38, 39