

## TABLE OF CONTENTS

<b>1</b>	<b>OVERVIEW.....</b>	<b>4</b>
1.1	COMPONENTS .....	4
1.2	SPECIFICATIONS .....	5
1.3	OPTIONAL PC HARDWARE REQUIREMENTS .....	5
1.4	OPTIONAL PC SOFTWARE REQUIREMENTS .....	5
<b>2</b>	<b>QUICK INSTALLATION.....</b>	<b>5</b>
2.1	CONNECTING THE T-MAX® TIMING SYSTEM .....	5
2.2	SETTING THE ADDRESSES. ....	6
<b>3</b>	<b>INSTALLATION .....</b>	<b>6</b>
3.1	WIRING.....	6
3.2	T-MAX® MGR/PRO.....	6
3.3	T-MAX® 3A.....	7
<b>4</b>	<b>INITIAL CONFIGURATION .....</b>	<b>7</b>
4.1	SETTING THE ADDRESS ON THE T-MAX® 3A .....	7
4.2	T-MAX® MGR/PRO.....	8
<b>5</b>	<b>MANUAL OPERATION .....</b>	<b>8</b>
5.1	DESCRIPTION .....	8
5.2	INITIAL CONFIGURATION.....	8
5.2.1	<i>Setting up the T-Max® Mgr/Pro.</i> .....	8
5.2.2	<i>Getting and Changing Parameter Numbers.</i> .....	10
5.2.3	<i>Security Levels</i> .....	11
5.3	STARTING A SESSION.....	11
5.4	CANCELING A SESSION .....	11
5.5	PAUSING A SESSION.....	12
5.6	CLEAN ROOM.....	12
5.7	CHECKING BED STATUS.....	12
<b>6</b>	<b>COMPUTER OPERATION .....</b>	<b>13</b>
6.1	INSTALLING ADNET 2000™.....	13
6.1.1	<i>Creating a Short Cut on Your Windows® Desktop.</i> .....	13
6.2	SETTING UP ADNET 2000™ .....	15
6.2.1	<i>Selecting the COM Port</i> .....	16
6.2.2	<i>Setting the Delay and Auto Start Mode.</i> .....	17
6.3	USING ADNET 2000™ .....	17
6.3.1	<i>Comms Status Screen</i> .....	17
6.3.2	<i>Manager Access Screen</i> .....	19
6.3.3	<i>Starting a Session.</i> .....	19
6.3.4	<i>Canceling a Session.</i> .....	19
6.3.5	<i>Getting and Changing Parameters</i> .....	20

6.3.6	Manager Utilities .....	21
6.3.7	Download Program from PC to Manager .....	21
6.3.8	Edit Manager Setup .....	22
6.3.9	Rescan Manager .....	22
6.3.10	Auto Address the T-Max® System.....	23
6.4	ADNET.EXE .....	23
6.4.1	Installing ADNET.EXE onto the PC's Hard Disk Drive.....	24
6.4.2	Loading ADNET.EXE as a TSR .....	24
6.5	USING ADNET.EXE .....	24
6.5.1	Delay - Entering a delay.....	26
6.5.2	Tan - Session Control.....	27
6.5.3	Bank - Monitoring Beds.....	27
6.5.4	Hours - Bulb Hours.....	27
6.5.5	Session Counts .....	27
6.5.6	Auto - Changing the Session Start After a Delay.....	28
6.5.7	Rescan.....	28
6.5.8	Get Param - Monitoring Parameters.....	28
6.5.9	SeNd Param - Changing Parameters.....	28
6.5.10	Load - Sending FLASH.BIN to T-Max® Mgr/Pro.....	29
6.5.11	Manual Parameters.....	29
6.5.12	Version.....	30
<b>7</b>	<b>EXPANSION.....</b>	<b>30</b>
7.1	ADDING BEDS .....	30
7.1.1	The ADNET-Repeater™ (optional).....	30
7.2	ADDING T-MAX® MANAGER/PRO'S .....	30
<b>8</b>	<b>T-MAX® 3A OVERVIEW.....</b>	<b>31</b>
8.1	CONNECTING TO THE TANNING BED .....	31
8.2	SETTING PARAMETERS ON THE T-MAX® 3A.....	31
8.2.1	Setting the Address.....	32
8.2.2	Setting Delay Time.....	32
<b>9</b>	<b>IN-ROOM SINGLE BED CONTROL.....</b>	<b>33</b>
9.1	STARTING A SESSION .....	33
9.2	PAUSING A SESSION .....	33
9.3	CANCELING A SESSION.....	33
<b>10</b>	<b>REMOTE SINGLE BED CONTROL.....</b>	<b>33</b>
10.1	WIRING.....	33
10.2	CONFIGURATION .....	34
10.3	SESSION CONTROL.....	34
<b>11</b>	<b>OTHER FEATURES AND OPTIONS.....</b>	<b>34</b>
11.1	CLEAN ROOM.....	34

11.2	COOL DOWN MODE .....	35
11.3	T-MAX® MONITOR/PLUS .....	35
11.4	T-MAX® SENTRY™ (OPTIONAL) .....	35
11.5	HIGH PRESSURE (SINGLE-SIDE) BEDS .....	36
11.5.1	Installing External Speaker (Optional) .....	36
11.6	CONNECTING A REMOTE PUSH BUTTON TO THE T-MAX® 3A (OPTIONAL) .....	36
11.7	T-MAX® ENCLOSURE (OPTIONAL) .....	37
<b>12</b>	<b>FIGURES.....</b>	<b>38</b>
12.1	FIGURE A - FRONT VIEW OF THE T-MAX® 3A .....	38
12.2	FIGURE B - REAR VIEW OF T-MAX® 3A CIRCUIT BOARD .....	38
12.3	FIGURE C - CONNECTING THE T-MAX® SENTRY™ .....	39
12.4	FIGURE D - CONNECTING TO LOWER CURRENT BEDS .....	39
12.5	FIGURE E - THE T-MAX® MGR/PRO .....	40
12.6	FIGURE F - CONNECTING THE T-MAX® SERIES .....	40
12.7	FIGURE G - MULTIPLE CONFIGURATIONS .....	41
12.8	FIGURE H - MODULAR CABLE PINOUTS .....	42
12.9	FIGURE I – CONNECTING AN EXTERNAL PUSH BUTTON TO A T-MAX® 3A .....	42
<b>13</b>	<b>TROUBLE SHOOTING .....</b>	<b>43</b>
13.1	TROUBLE SHOOTING .....	43
13.2	ERROR CODES.....	45
<b>14</b>	<b>INDEX.....</b>	<b>46</b>

(C) COPYRIGHT 2000 By Salon Systems, Inc

ADI PN: MNTMAXMGRPRO Rev 1

The information in this manual is believed to be correct. However, Salon Systems, Inc. assumes no responsibility for any errors herein. This information is subject to change without notice, and should not be construed as a commitment by Salon Systems, Inc.

#### WARRANTY

This product is warranted against defective materials and workmanship for a period of two years from date of purchase. In the event the product fails to perform, it may be returned; Shipping Paid, to the factory to be serviced or replaced at the factory's discretion. Salon Systems, Inc. will pay to ship the repaired or replaced product by the shipping means of our choosing. Returns will not be accepted without a Return Authorization Number assigned by the factory.

It is a Condition of Sale that the user of Salon Systems Inc.'s products assumes all risk and responsibility of use and indemnifies Salon Systems, Inc. against all damages. Salon Systems, Inc. is not liable for loss of profits, lost savings, special, incidental, consequential, indirect or other similar damages arising from breach of warranty, breach of contract, negligence, or other legal action even if Salon System, Inc. or its agent has been advised of the possibility of such damages, or for any claim brought against you by another party. This warranty allocates risks of product failure between the Purchaser and Salon Systems, Inc. Salon System, Inc.'s hardware pricing reflects this allocation of risk and the limitations of liability contained in this warranty

It is a violation of the stated warranty to cut or modify the provided modular cables supplied with the T-Max® Series Timers. Connecting the T-Max® Series to third party timers not approved by Salon Systems, Inc. also violates the stated warranty. Contact your dealer or Salon Systems, Inc. if you are not sure if the timer that you are connecting is an approved timer.

## 1 OVERVIEW

Congratulations on your purchase of Salon Systems, Inc.'s T-Max® Series of tanning bed timers. The T-Max® is designed for complete automation and control of your tanning equipment. It is also an excellent manual backup system in case your PC fails. The T-Max® Mgr/Pro can be used as a stand alone unit or can be controlled with a computer using a number of popular software packages. Manual operation is accomplished via front panel controls.

Manual operation is accomplished by pressing the proper sequence of buttons. There are 64 lights, each showing the status of a bed. A 16 key keypad and 16x2 Vacuum Fluorescent Display (VFD) display allows you to operate the T-Max® Mgr/Pro manually. If the T-Max® Mgr/Pro loses power, the T-Max® 3As can be used as stand alone timers. As long as the T-Max® Mgr/Pro is active the T-Max® 3As cannot be used as independent timers.

This manual should be reviewed by a licensed electrician prior to installing your new system. Check for compliance with local building codes.

### 1.1 Components

#### **T-Max® Mgr/Pro:**

- 1 T-Max® Mgr/Pro Unit
- 1 9V, 800mA Power Transformer
- 1 RS-232C Cable DB9M-DB9F
- 1 DB25F-DB9M Com Port Adapter
- 1 ADNET™ 2000 Software (3.5" diskette)
- 1 Manual

#### **T-Max® 3A/F** (Sold separately, 1 required for each bed in the salon):

- 1 T-Max® 3A Timer Interface
- 1 9V, 200mA Transformer
- 1 T-Max® 3A User's Guide
- 1 Modular cable with RJ-22 connectors on both ends
- 1 Manual

If any component(s) are missing contact your dealer.

#### **Options:**

##### **T-Max® Enclosure** (Optional):

Encloses the T-Max® 3A to hang on the wall or set on a desk.

##### **T-Max® Speaker** (Optional):

Connects to T-Max® 3A to provide higher alarm indications.

##### **T-Max® Sentry** (Optional; 1 required for each T-Max® 3A) :

Remote indication of bed not operating properly.

##### **T-Max® Monitor/Plus** (Optional) :

Provides 16 (remote), displays showing bed times and status's.

**ADNET-Repeater** (Optional), (may be needed in larger salons):  
Connects in the middle of the daisy chain to amplify the communications signal.

## 1.2 Specifications

### T-Max® Mgr/Pro:

<b>Power Supply</b>		IN - 120VAC OUT - 9 DC @ 1Amp
<b>Current Draw</b>		800mA
<b>Dimensions</b>		12.75" x 5.5" x 1"
<b>Communication</b>	T-Max® Mgr/Pro - PC	RS-232C, 9600 Baud, 8Bit, 1 Stop Bit, No Parity

### T-Max® 3A:

<b>Power Supply</b>		IN - 120VAC OUT - 9-12V (DC or AC) @ 800mA
<b>Current Draw</b>		200mA
<b>Dimensions:</b>	Cover Plate:	5.25" x 5.25"
	T-Max® 3A PCB:	2.5: x 3.75" x 1.5"
<b>Relay:</b>		220VAC @ 5A; SPST Form A

### Display:

T-Max® Mgr/Pro: 64 dual color lights showing bed status.  
1, 16x2 VFD display shows individual bed time and status.

T-Max® 3A: 1, 2 digit LED display showing bed time and status.

### Maximum Units:

128 T-Max® 3As controlling 128 beds.  
8 T-Max® Mgr/Pro's can be used to control up to 128 beds.  
1 Computer can be connected to each T-Max® Mgr/Pro.

## 1.3 Optional PC Hardware Requirements

- 1) 32KBytes available RAM.
- 2) 1.4MBytes available Hard Disk Drive Space.
- 3) 1 available RS232 port.
- 4) IBM AT, 286, 386, 486, Pentium or Compatible.

## 1.4 Optional PC Software Requirements

- 1) MS-DOS® 3.1 or higher.
- 2) Windows® 95/98/NT.

## 2 Quick Installation

### 2.1 Connecting the T-Max® Timing System

Note: Customers should not be in tanning bed when auto addressing beds.

- 1) 1) Install a T-Max® 3A in each room. Install the T-Max® Mgr/Pro at the front desk.

- 2) A 50' modular cable (phone type cable) is provided with each T-Max® 3A. Run one modular cable from the T-Max® Mgr/Pro location to T-Max® 3A in the nearest tanning room. Run the other modular cables from room to room in a daisy-chain fashion.
- 3) Connect the modular cables to each T-Max® 3A and the T-Max® Mgr/Pro. When finished each T-Max® 3A should have a modular cable connected to each port, with the exception of the last T-Max® 3A in the series.
- 4) Connect the tanning bed to the “J3 Contact” screw terminals on the back of the T-Max® 3A.

**Important:** There may be many wires visible on the tanning bed. Two of these wires are specifically used for connecting the bed to an external timer. If you are not sure which two wires to use, refer to the tanning bed’s manual or contact the bed’s manufacturer.

- 5) Each T-Max® 3A came with a 9-12V power supply. Connect a power supply to the “PWR IN 0-12V” screw termination block on the back of each T-Max® 3A.
- 6) Plug each of the T-Max® 3A’s power supplies into a standard 110V power outlet.

## 2.2 Setting the Addresses.

- 7) Apply power to the T-Max® Mgr/Pro. Wait until the T-Max® Mgr/Pro is done scanning.
- 8) Press the Menu/Call button on the T-Max® Mgr/Pro.
- 9) Enter an 888 for the Security Code  
Each T-Max® 3A will show a 99 on their displays and beep continuously.
- 10) Go to each room **in order** (1,2 3, 4, 5, 6 etc.) pressing the Start/Stop buttons in each room until all displays show 0 and the alarms stop.  
As you press the Start/Stop buttons in each room, the Maximum Bed Number on the T-Max® Mgr/Pro will automatically count up.
- 11) Press the Clear Button on the T-Max® Mgr/Pro.
- 12) Cycle power to the T-Max® Mgr/Pro. After a short pause, the T-Max® Manger/Pro will then scan and lights will illuminate for each bed found.

Installation is now complete.

## 3 INSTALLATION

### 3.1 Wiring

Run the modular cable with RJ-22 connectors provided with each T-Max® 3A from the T-Max® Mgr/Pro to the first room. Run the modular cables from room to room in a daisy chain.(Refer to Figure G, Section 12.7).

### 3.2 T-Max® Mgr/Pro

Connect the 9V power supply provided with the T-Max® Mgr/Pro to the power input on the T-Max® Mgr/Pro and a 120VAC outlet. Connect the modular cable going to the tanning room

to the modular connector on the T-Max® Mgr/Pro (refer to Figure G, Section 12.7). If you are using a computer connect the RS-232 DB9F-DB9M cable between the serial port on the T-Max® Mgr/Pro and the serial port on the back of your computer.

### 3.3 T-Max® 3A

A T-Max® 3A must be connected to each tanning bed and power must be applied. (Refer to Section 2.1 and Section 12.2-Figure B).

In the first tanning room, connect the modular cable connected to the T-Max® Mgr/Pro to one of the modular ports on the back of the T-Max® 3A. Connect the modular cable running to the next tanning room to the open modular port. In the second tanning room, connect the modular cable from the first tanning room to one of the modular ports on the back of the T-Max® 3A. Connect the modular cable running to the third room to the open modular port. Repeat this until all of the rooms are connected. (Refer to Figure G, Section 12.7 in this manual and Figure B, Section 12.2).

## 4 INITIAL CONFIGURATION

### 4.1 Setting the Address on the T-Max® 3A

*Note:* If you are installing a new T-Max® system and have just completed Section 2 (Quick Installation), the addresses on the T-Max® 3As are set and you do not need to independently set addresses on the T-Max® 3As

- 1) Remove power from the T-Max® Mgr/Pro.
- 2) Apply power to the T-Max® 3A. It should show a 9.9 and an alarm should sound.

If it just shows a 0, go to Step 4.

- 3) Press and release the Start/Stop button. The display will flash an 8.8 and the alarm will stop. Press and release the Up button until the display stops flashing and shows a 0.
- 4) Press and hold the Start/Stop and Up Buttons simultaneously on the T-Max® 3A until a .1 appears on the display. This should take about 5-6 seconds. Release the buttons.
- 5) Press the Start/Stop button on the display. A flashing number will appear. This is the address that the timer is currently set to.
- 6) Press the Up or Down button until the desired address is displayed.

*Note:* When setting the addresses, remember these three rules:

- Set each T-Max® 3A to a unique address.
- Do not set any T-Max® 3A to address 00.
- If the period is flashing, you are over address 100.

- 7) Once the desired address is displayed, press and release the Start/Stop button. A solid .1 will be displayed.
- 8) Press and hold both the Up and Down buttons until a 0 is displayed.

Repeat Steps 2-8 for each T-Max® 3A that you are manually setting the address on.

## 4.2 T-Max® Mgr/Pro

- 1) Make sure all wiring is completed. Refer to Section 3 for wiring instructions.
- 2) Make sure that the modular cable running to Room 1 is connected to the modular connector on the T-Max® Mgr/Pro (Refer to Figure G, Section 12.7).
- 3) Apply power to the T-Max® Mgr/Pro.

The T-Max® Mgr/Pro will scan for T-Max® 3As. An amber light will illuminate for each T-Max® 3A detected. Once scanning is complete, the light will turn green.

## 5 MANUAL OPERATION

### 5.1 Description

The T-Max® Mgr/Pro has 64 dual-colored lights showing bed status. Section 5.8 describes the light indicators.

A 16x2 VFD display on the upper right corner of the T-Max® Mgr/Pro shows bed status and times. A 16 key keypad allows the user to control the salon.

### 5.2 Initial Configuration

#### 5.2.1 Setting up the T-Max® Mgr/Pro.

- 1) Apply power to the T-Max® Mgr/Pro. The T-Max® Mgr/Pro will scan the network to find all T-Max® 3As.
- 2) Press the Call/Menu Button. The following message will appear: Security#.  
A sheet was provided showing the factory default settings for each security level and security level descriptions. You must go to security level 3.
- 3) The following message will appear: GET PARAMS? Press Next.
- 4) The following message will appear: SEND PARAMS? Press Next
- 5) The following message will appear: MGR PARAMS? Press Enter.
- 6) The following message will appear: MGR DELAY TIME. Enter the delay time in minutes, followed by the Enter button.

If you want the session to start right away, enter a delay of 0. The maximum setting for delay is 10 minutes. This setting is for every bed in the salon.

- 7) The following message will appear: MGR START MODE. Enter the desired Auto Start Mode followed by the Enter button.

This setting is for every bed in the salon. If a 1 is entered, then the bed will energize immediately after the delay time expires. If a 0 is entered, the bed will not energize when the delay time expires, but session time will begin counting down (if a 0 is pressed, the 0 will not appear on the display). If a 2 is entered, then the T-Max® Mgr/Pro is set to infinite delay and session will not start until the Start/Stop button is pressed on the T-Max® 3A.



**Note:** If the T-Max® Mgr/Pro is controlled by a computer, the Delay and Auto Start mode are controlled by the computer's software unless you set the T-Max® Mgr/Pro to infinite delay. If the T-Max® Mgr/Pro is set to Infinite Delay, the Delay set in the T-Max® Mgr/Pro or the PC will be ignored.

8) The following message will appear: MGR MAX BED. Enter the maximum bed number followed by the Enter key.

This number must be equal to or higher than the **highest address** that a T-Max® 3A is set to. For example if you have six beds, but are addressing the T-Max® 3As to 1,2,3,4,5, and 8, then set the maximum bed number to 8.

9) The following message will appear: MANAGER NUM. Enter the T-Max® Mgr/Pro address, followed by the Enter button.

Up to 8 T-Max® Mgr/Pro's can be connected in a single salon. One T-Max® Mgr/Pro must be set to address 0. All slave T-Max® Mgr/Pro's must be set to an address other than 0. Set each Slave T-Max® Mgr/Pro to a unique address.

10) The following message will appear: MGR RE-SCAN TIME. Press the Enter key (without entering a number)

11) The following message will appear: MAX SLAVE. This should be the same number as the highest address you have set any slave T-Max® Mgr/Pro's to. For example, if you have three T-Max® Mgr/Pro's, one must be set to address 0 (Master). If one slave T-Max® Mgr/Pro is set to 1 and the other is set to 3, the MAX slave value should be 3. The highest value that can be entered is 7. Enter the MAX SLAVE number followed by the Enter button.

The VFD display will then read "Saving Params".

12) Cycle power to the T-Max® Mgr/Pro.

**Table 1 - Parameter Numbers for Getting and Sending Parameters.**

Parm #	Description	Max #	Default	Notes
1	Address	255	254	Address of T-Max® 3A
2	Beep Mode	1	0	Used for High Power beds. 0=Alarm only, 1=Alarm and Flip
3	Delay Time	10	0	Delay in minutes stored in the T-Max® 3A.
4	Current Sense	1	0	For the T-Max® Sentry™ Option. 0=Disabled, 1=Enabled.
5	Session Counts	65535	0	Total session counts for T-Max® 3As.
6	Lamp Hours	65535	0	Bulb hours for each bed.
7	Bed Hours	65535	0	Number of hours a bed is on.
8	Manual Session Counts	65535	0	Counts the number of sessions the T-Max® 3A has run while in Stand Alone Mode
9	Clean Room	1	1	0 = Clean Room Disabled, 1 = Enabled
10*	Manual Lockout	1	0	0 = Stand Alone Enabled, 1 = Disabled
13	Cool Down Mode	10	0	0 = Disabled, 1-10=Enabled. Time delay in minutes allowing bed to cool.
15	Fixed Session Counts	65535	0	Counts number of sessions ran through the T-Max® 3A. This value cannot be changed at all. Used as point of reference.
17	Clean Clear	1	0	0 = Press and hold the Up button for 3-4 seconds to clear the clean room. 1 = Press and release the Up button to clear instantly
18	Redisplay	2	0	0 = After a session ends and the clean room is cleared, the T-Max® 3A will show a 0. 1 = After session ends and the clean room is cleared, the T-Max® 3A will show the last session time entered. 2-10 = After the session ends and the clean room is cleared, the max. time will show on the T-Max® 3A.
20	External Speaker	1	0	0 = Speaker on T-Max® 3A, 1 = External Speaker will be used.
21	Pause Mode	1	0	0 = When session is paused, time will continue to count down. 1 = When session is paused, session time will stop counting down.
22	Auto Bed Shut Off	1	0	For T-Max Intercom Systems Only. 0 = When timer is called bed will stay on, 1 = When timer is called, bed will stuff off automatically.

\* If Manual Lockout is enabled, the T-Max® 3A cannot operate as a stand-alone timer. In the event of a T-Max® Mgr/Pro failure, this parameter cannot be enabled at the T-Max® 3A

### 5.2.2 Getting and Changing Parameter Numbers

Parameters are values stored in each T-Max® 3As such as Lamp Hours, Session Counts, etc. Table 1 shows the parameter numbers and details about them.

#### To get or change parameters, do the following:

- 1) Press the bed number you want to manipulate followed by the Enter Key. The bed number and its status will appear.
- 2) Press the Call/Menu button.
- 3) The following message will appear: Security #. Enter the security number for level 3 followed by the enter key.
- 4) The following message will appear: GET PARAMS? If you just want to observe current values, press Enter. If you want to send new values, press Next, then go to Step 6.
- 5) The following message will appear: WHICH PARAMETER? Enter the parameter number from Table 1 followed by the Enter key.

The top line on the VFD display will show the bed number. The second line will show the value for the parameter you checked.

Press Clear to exit.

- 6) Press the Next button.
- 7) The following message will appear: SEND PARAMS? Press the Enter button.
- 8) The following message will appear: WHICH PARAMETER? Enter the parameter number from Table 1 followed by the Enter button.
- 9) The following message will appear: SEND WHAT DATA? Enter the value that you want to store in that timer followed by the Enter button. Press Clear to exit.

### 5.2.3 Security Levels

There are 5 security levels on the T-Max® Mgr/Pro. When the Menu button is pressed, the display will prompt you for a security number. Refer to the enclosed Security number sheet on how to change security numbers. The description of these levels follows:

#### **Level 0 - Computer Control Level**

Sessions can be monitored, but not started manually.

#### **Level 1 - Employee Level**

Session operation only. No parameters can be observed or changed.

#### **Level 2 - Supervisor's Level**

Parameters values can be observed but not changed.

#### **Level 3 - Manager's Level**

Parameters can be observed and changed. Security numbers cannot be changed.

#### **Level 4 - Owner's Level**

This level allows the changing of Security numbers for access.

Asterisks will be displayed on the lower left corner of the VFD indicating which security number was last entered, a single asterisk for level 1, 2 for level 2 and 3 for level 3.

### 5.3 Starting A Session

You must be at Security Level 1, 2 or 3 to start sessions manually.

- 1) Press the bed number you want to start, followed by the Enter button.
- 2) Press the Time button. The display will read "Enter Session Time"
- 3) Enter the Session time you want followed by the Enter button.

If a delay other than 0 has been entered, the delay will count down on the display. If an Infinite delay has been set up, the session time will show but will not count down.

DELAY will show for status. Once the customer presses the Start/Stop button on the T-Max® 3A in the room, the session will start. The display will show the session time counting down and the status will say ON.

### 5.4 Canceling A Session

- 1) Press the bed number that you want to cancel, followed by the Enter button.
- 2) Press the Time button. The message "Enter the Time" will appear on the VFD display.

3) Press the Enter button (without entering any time).

If the clean room is enabled and the delay time has expired, DIRTY will appear on the display the Status LED will be Red. Once the clean room has been cleared, the display on the T-Max® Mgr/Pro will show READY and the Status LED will turn Green.

## 5.5 Pausing A Session

To pause a session, press the Start/Stop button on the T-Max® 3A at the tanning bed. The flashing period will stop flashing and stay illuminated. The T-Max® Mgr/Pro display will show PAUSE on the display.

**Note:** The session time will continue to count and display will reflect the remaining session time.

To restart the session, press the Start/Stop button on the T-Max® 3A. The period will continue flashing and the Status on the T-Max® Mgr/Pro will change to ON.

## 5.6 Clean Room

Once the session time has elapsed, the display will show two periods with no numbers which is an indication that the room needs to be cleaned. For a complete description of Clean Room, refer to Section 11.1.

## 5.7 Checking Bed Status

To check the status of a bed, glance at the 64 dual colored lights.

Green = Bed is ready for a new session.

Red = Bed needs to be cleaned.

Off = Bed is not available.

Flashing Red = There are less than two minutes left in a session.

Flashing Green = Bed is in the Cool Down Mode.

Yellow = Scanning or Error.

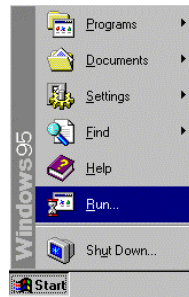
To check time remaining in an active session, press the bed number followed by Enter.

To check the times on all beds, press the Next or Prev (previous) button repeatedly.

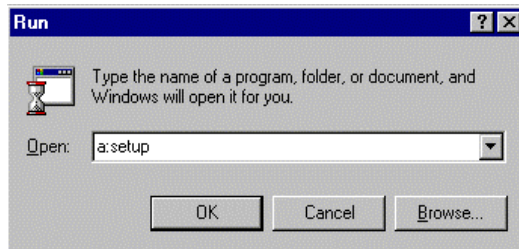
## 6 COMPUTER OPERATION

### 6.1 Installing ADNET 2000™

- 1) Place the ADNET 2000™ diskette in drive A.
- 2) Click Start with your left mouse button.



- 3) Click Run with your left mouse button.



- 4) Type the following: a:setup.
- 5) Click OK (or press Enter)
- 6) Follow the directions on the screen

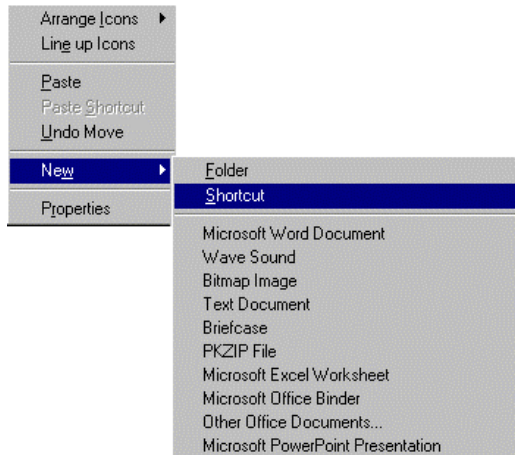
#### 6.1.1 Creating a Short Cut on Your Windows® Desktop.

- 1) Place your mouse anywhere on the desktop screen. Make sure it is not over an existing Icon.

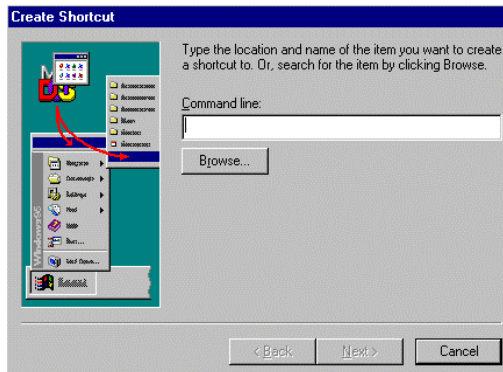
2) Press the right mouse button. A window will appear.



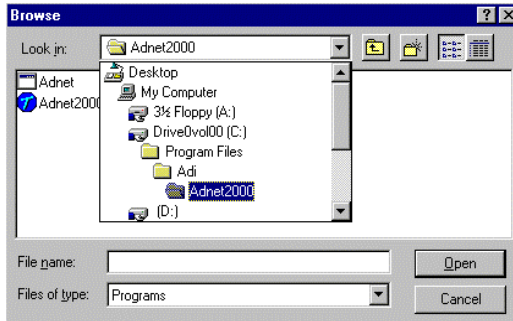
3) Move the mouse pointer to New. A second window will appear.



4) Move the mouse to Shortcut and click it with your left mouse button. A Create Shortcut window will appear.



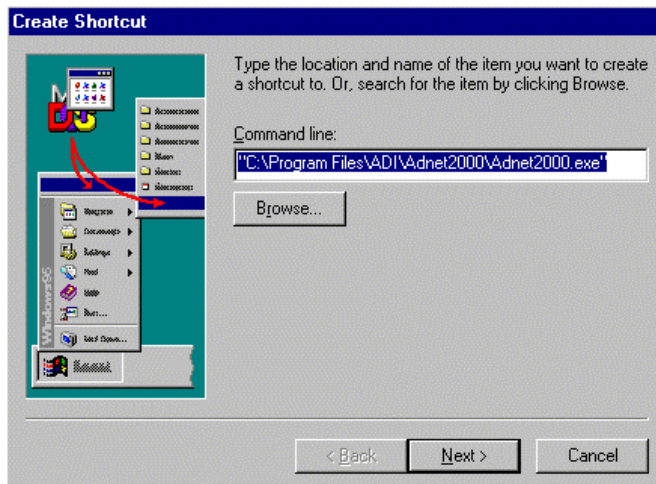
5) Click Browse. A Browse window will appear.



6) Double click the folder that you installed ADNET 2000™ into with your left mouse button.

The factory default folder is c:\program files\adi\ADNET2000. This is the folder the ADNET 2000™ files will probably be under.

7) Double click the ADNET 2000™ icon with your left mouse button. The Create Shortcut window will reappear.



8) Click Next with your left mouse button.

9) Click Finished with your left mouse button.

10) The ADNET 2000™ icon will appear where you placed your mouse in Step One.

## 6.2 Setting Up ADNET 2000™

Make sure ADNET 2000™ is properly installed and the icon is created as described in Section 1.

Double click the ADNET 2000™ Icon with your left mouse button. The ADNET 2000™ window will appear:

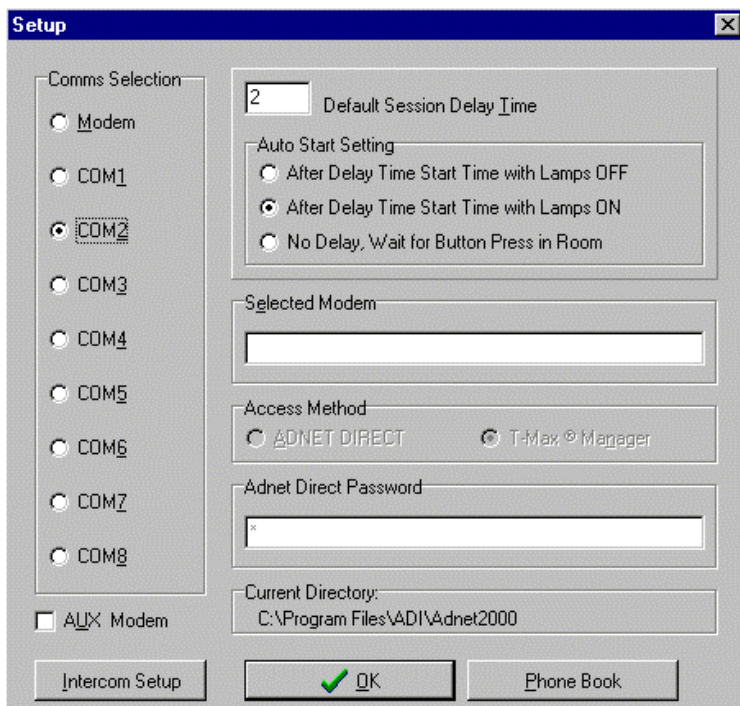
**ADNET 2000™ Window**



### 6.2.1 Selecting the COM Port

1) Click Setup with your left mouse button. The Setup window will appear

**Setup Window**



2) Click the COM port that you are connected to with your left mouse button. A black circle will appear beside that COM port you have selected.



## 6.2.2 Setting the Delay and Auto Start Mode

- 1) Place the mouse in the window to the left of “Default Session Delay Time” and click the left mouse button. A flashing cursor will appear in the window.
- 2) Use the Delete or Backspace key to delete the number currently in the window and type in the desired delay time.

The longest the delay time can be is 10 minutes. If no delay time is desired (Start session immediately) enter a 0. If infinite delay time is desired (allowing the customer as much time as they want to get undressed), go to Step 3.

- 3) In the Auto Start Setting window, place the mouse in the circle and click the left mouse button to set the Auto Start Setting.

After Delay Time Start with Lamps OFF – After the delay time expires, the session time will start but the lamps will not come on. The display on the timer will show the remaining session time. The Start/Stop button must be pressed to turn the lamps on.

After Delay Time Start with Lamps ON - After the delay time expires, the session time will start and the lamps will come on automatically. The display on the timer will show the remaining session time.

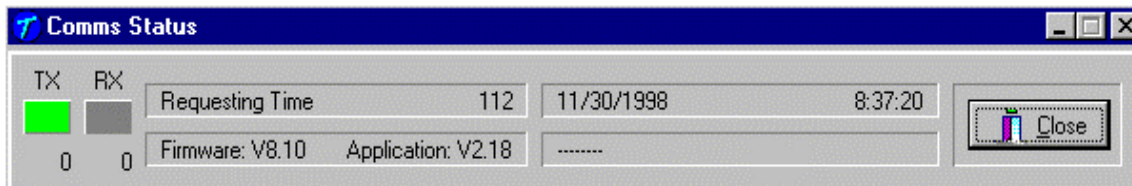
No Delay, Wait For Button Press in Room – The timer will show the session time in the room but will not count down. The Start/Stop button on the timer in the room must be pressed to energize the lamps and start the session time counting down.

- 5) Click OK. The ADNET 2000™ window will reappear

## 6.3 Using ADNET 2000™

- 1) Make sure the T-Max® Manager is properly installed and connected to the computer. Refer to the T-Max® Manager User’s guide.
- 2) Click Start. The Comms Status and Manager Access Screens will appear.

### Comms Status Window



### 6.3.1 Comms Status Screen

The Comms status screen shows the status of communications between ADNET 2000™ and the T-Max® Mgr/Pro.

RX and TX show communication between the computer and the T-Max® Mgr/Pro. These should be flashing unevenly.

Firmware version is the ROM version stored inside the T-Max® Mgr/Pro.

Application is the RAM software version inside the T-Max® Mgr/Pro r.

If the boxes below TX and RX do not flash or Firmware version reads 99.99, then there is no communications between the PC and the T-Max® Mgr/Pro. Make sure the T-Max® Mgr/Pro is connected to the PC and power is applied to the T-Max® Mgr/Pro. If there is still no communications, click Close with the left mouse button, click Setup from the ADNET 2000™ window and try another Comm port setting.

### Manager Access Window

The screenshot shows the 'Manager Access' window with a menu on the left and a table on the right. The menu includes 'Activity Log', 'Auto Address Command', 'Rescan Command', 'Edit Manager Params', and several session management options. The table has columns for Bed, Time, Status, Type, Vers, and Max. Row 7 is highlighted with a dotted border, showing a 'Dirty' status.

Bed	Time	Status	Type	Vers	Max
1	01:04	Delay	4	2	20
2	08:20	ON	4	2	10
3	00:00	Ready	3	8	20
4	18:23	Pause	3	8	20
5	00:00	Ready	3	8	20
6	00:00	Ready	3	8	20
7	00:00	Dirty	3	8	20
8	00:00	Ready	3	8	20
9			----		
10			----		
11			----		
12			----		
13			----		
14			----		
15			----		
16			----		
17			----		
18			----		
19			----		
20			----		
21			----		

### 6.3.2 Manager Access Screen

The upper left corner of the Manager Access screen shows <Manager Status> and <Bed Parameter Utilities>. These are discussed in Sections 6.3.6 and 6.3.5. The right side shows the beds you have and their statuses.

The left side of the screen is an activity log. This is to aid in trouble shooting. The right side of the screen shows bed status.

Bed - Bed number

Time - current time.

Status - Status if the timer (Ready, On, Pause, Delay, Dirty or Cool)

Type - Type of timer in each room.

Vers - Software version in each timer.

Max - Maximum time for each timer.

### 6.3.3 Starting a Session.

- 1) Place the mouse in the Time window beside the bed number that you want to start.
- 2) Press the Left mouse button.
- 3) The Start Session window will appear. Enter the bed number you want to start and the desired session time in minutes.
- 4) Click Yes. If you don't want to start a session, click No.
- 5) The session will start and the display will show the bedtime and status.

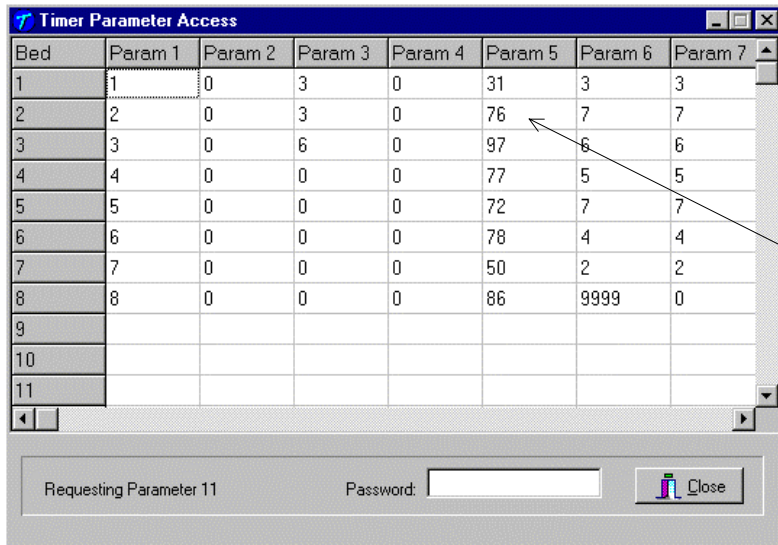
### 6.3.4 Canceling a Session.

- 1) Place the mouse in the Time window beside the bed number you want to Cancel.
- 2) Press the Left mouse button.
- 3) A cancel session window will appear. If the displayed bed is correct, press Yes. If the displayed bed is not the bed you want to cancel, enter the correct bed number click Yes with your left mouse button. If you don't want to cancel any session, click No.

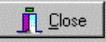
### 6.3.5 Getting and Changing Parameters

- 1) Click Bed Parameter Utilities with your left mouse button.
- 2) Click Upload Parameter from Beds. The Timer Parameter Access screen will appear:

**Timer Parameter Access Window**



Bed	Param 1	Param 2	Param 3	Param 4	Param 5	Param 6	Param 7
1	1	0	3	0	31	3	3
2	2	0	3	0	76	7	7
3	3	0	6	0	97	6	6
4	4	0	0	0	77	5	5
5	5	0	0	0	72	7	7
6	6	0	0	0	78	4	4
7	7	0	0	0	50	2	2
8	8	0	0	0	86	9999	0
9							
10							
11							

Requesting Parameter 11      Password:       

- 3) To change a parameter, move the mouse to the window beside Password and click it with your left mouse button. A flashing cursor will appear in the window. Enter the password (see the attached password sheet provided with this manual). As you enter the password, an (\*) will appear for each character.

After the password has been entered, place the mouse in the window where you want to change the parameter. For example, if you want to change parameter 5 for bed 2, place the mouse in the white window below Param 5 and beside 2 as the arrow shows in the Timer Parameter Access window.

- 4) Click the left mouse button.
- 5) A Change Parameter Data window will appear. Enter the value you want to change the parameter to then click OK with your left mouse button. If you don't want to change the parameter value, click Cancel.
- 6) The change parameter window will change the show the new value for that parameter.
- 7) When you are done changing parameters, click Close with your left mouse button.

**Table 2 - Parameter Table**

Param #	Description	Max #	Default	Notes
1	Address	255	254	Address of timer
2	Beep Mode	1	0	Used for High Pressure beds. The T-Max® 3A will beep 10 seconds half way through the session. 0=disabled, 1=Enabled.
3	Delay Time	10	0	Delay in minutes stored in the T-Max® 3A.
4	Current Sense	1	0	T-Max® Sentry™ Option. 0=Disabled, 1=Enabled.
5	Session Counts	65535	0	Total session counts for T-Max® 3As.
6	Lamp Hours	65535	0	Bulb hours for each bed.
7	Bed Hours	65535	0	How many hours a bed is on.
8	Manual Session Counts	65535	0	Counts the # of sessions T-Max® 3A has run as a stand alone timer. Sessions started from T-Max® Mgr or PC not counted.
9	Clean Room	1	1	0=Clean Room Disabled, 1=Enabled
10*	Manual Lockout*	1	0	0=Stand Alone Enabled, 1=Disabled. Prevents the T-Max® 3A from being an independent timer.
13	Cool Down Mode	10	0	0 = Disabled, 1-10=Enabled. Time delay in minutes allowing bed to cool. New session cannot start until time expires.
15	Fixed Session Counts	65535	0	Counts number of sessions ran through the T-Max® 3A. This value cannot be changed. Used as point of reference.
17	Clean Clear	1	0	0 = Press and hold the Set button for 3-4 seconds to clear the clean room. 1 = Press and release the Set button to instantly clear the clean room.
18	Redisplay	2	0	0=After a session ends and the clean room is cleared, the T-Max® 3A will show a 0. 1=After session ends and the clean room is cleared, the T-Max® 3A will show the last session time entered. 2 = After the session ends and the clean room is cleared, the max. time will show on the T-Max® 3A.
19	TPI	1	0	Third Party interface mode. Must be set when connecting timer to non-T-Max® timing system.
20	External Speaker	1	0	Set to a 1 if connecting an external speaker to a T-Max® 3A. Set to 0 if using speaker on the T-Max® 3A.
21	Pause Mode	1	0	0 = When session is paused, time will continue to count down. 1 = When session is paused, session time will stop counting down.
22	Auto Bed Shut Off	1	0	For T-Max Intercom Systems Only. 0 = When timer is called bed will stay on, 1 = When timer is called, bed will stuff off automatically.

\* If Manual Lockout is enabled, the T-Max® 3A cannot operate as a stand-alone timer. In the event of a T-Max® Mgr/Pro failure, this parameter cannot be enabled at the T-Max® 3A

### 6.3.6 Manager Utilities

Click Manager Utilities with your left mouse button. The window will appear with the following options:

Download Program from PC to Manager - Allows you to load the T-Max® Mgr/Pro with new software

Edit Manager Setup - Allows you to change T-Max® Mgr/Pro Setting for manual use.

Rescan timers - Allows you to have the T-Max® Mgr/Pro rescan the timer network

Auto Address - Allows you to Auto Address the entire salon.

### 6.3.7 Download Program from PC to Manager

Click Manager Utilities then Download Program from PC to Manager with your left mouse button.

ADNET 2000™ will load the T-Max® Mgr/Pro with the latest software. The Activity Log will show Sending 256 bytes to different addresses. After the download is complete a Manager Restart window will appear. The T-Max® Mgr/Pro will rescan. A status bar will scroll across the window. Once this is complete, you can start new sessions.

### 6.3.8 Edit Manager Setup

1) Click Manager Utilities then Edit Manager Setup with your left mouse button.

The Manager screen will appear:

P#	Data
0	0
1	3
2	1
3	12
4	0
5	0
6	0
7	0
8	0
9	0
10	1
11	2
12	3
13	0
14	0
15	65535
16	65535
17	65535
18	65535
19	65535
20	65535

Delay

Auto Start

Maximum Bed Number

Display Mode

All others not used

Only P# 1,2,3 and 4 are used. These settings are changed in the T-Max® Mgr/Pro for use when the T-Max® Mgr/Pro is used manually in the event of a computer failure.

When changes are complete, click the X on the upper right corner of the window with your left mouse button.

### 6.3.9 Rescan Manager

Click Manager Utilities then Rescan Manager with your left mouse button. The T-Max® Mgr/Pro will rescan the timer network.

### 6.3.10 Auto Address the T-Max® System

Auto Address will allow you to reset the addresses on the timers in the room. This is typically done on initial installation, when adding tanning beds or when you want to change the room numbers in your salon.

**Note: Make sure no one is tanning before selecting this option.**

- 1) Click Manager Utilities then Auto Address the T-Max® System with your left mouse button. A window will appear with the following message: Proceed with Auto Address of Entire System? (Make sure there are no active sessions).
- 2) Click OK with your left mouse button if you want to proceed. Click Cancel if you do not want to auto address the salon.

Once you click OK, the Manager Access screen will disappear and the ADNET 2000™ screen will appear. Each timer in the salon will show a 99 and be sounding an alarm. The T-Max® Manager/Pro VFD display will show Auto Addressing Bed 00. Go to each timer in order that you want the salon to be and press the Start/Stop buttons along the way. Each timer will go to a 0. Make sure you press the Start/Stop buttons in order that you want the salon addressed. Go to room 1 first, then room 2, room 3 etc. The T-Max® Mgr/Pro VFD display will show Auto Addressing Bed XXX. XXX will be one number higher than the number of beds addressed. Press the Enter button on the T-Max® Manager/Pro keypad.

- 3) On your computer, press the Start button with your left mouse button. The Manager Access screen will reappear with the new configuration being displayed. The T-Max® Mgr/Pro can be controlled via a computer using many third party software packages or ADNET.EXE provided with the T-Max® Mgr/Pro.

## 6.4 ADNET.EXE

This is a DOS program that can be used to control your salon in the event that your PC's hard disk drive fails. To use ADNET.EXE:

Place the diskette in drive A and type the following: **A:** <Press the Enter key>. The prompt will read as follows: **A:|>\_**

Type the following: **CD ADNET** <press the Enter key>. The prompt will read as follows: **A:|ADNET>\_**

Type the following: **ADNET C?** <press the Enter key>.

The “?” is the COM port number the T-Max® Mgr/Pro is connected to on your computer. Refer to the computer's users guide to determine what serial port you are using, then use Table 3 to determine what to type.

**Table 3 - Command Lines for Loading ADNET.EXE**

Serial Port	Command Line Used
COM1	ADNET C1 <press Enter key>
COM2	ADNET C2 <press Enter key>
COM3	ADNET C3 <press Enter key>
COM4	ADNET C4 <press Enter key>

### 6.4.1 Installing ADNET.EXE onto the PC's Hard Disk Drive

Place the diskette in drive A and type the following: **A:** <Press the Enter key>. The prompt will read as follows: **A:\>\_**

Type the following: **CD ADNET** <press the Enter key>. The prompt will read as follows: **A:\ADNET>\_**

Type the following: **Install** <press the Enter key>. ADNET.EXE and all the associated files will be installed to the computer's Hard disk drive in the TMAX directory.

### 6.4.2 Loading ADNET.EXE as a TSR

A TSR (Terminate Stay Ready) is a program that loads in memory that other programs communicate with to allow you to do certain things. An example of a TSR is a mouse driver for a DOS application. Some programs require ADNET.EXE to be loaded as a TSR to communicate with the T-Max® Mgr/Pro. If you don't know if your program requires this, consult your software's manufacturer.

To load ADNET.EXE as a TSR, type the following: **ADNET T C?** <press Enter >

The “?” is the COM port number the T-Max® Mgr/Pro is connected to on your computer. Refer to the computer's users guide to determine what serial port you are using, then use Table 4 to determine what to type.

**Table 4 - Command Lines for Loading ADNET.EXE as a TSR**

Serial Port	Command Line Used
COM1	ADNET T C1 <press Enter key>
COM2	ADNET T C2 <press Enter key>
COM3	ADNET T C3 <press Enter key>
COM4	ADNET T C4 <press Enter key>

**Note:** Placing this command line in your AUTOEXEC.BAT file on your PC will load ADNET as a TSR every time you turn on your computer. If your PC loads your tanning software automatically when you turn on your computer, you will need to place the ADNET command line before the line that loads your tanning software. Consult your computer dealer or computer's manufacturer for instructions on how to add the ADNET command line to your AUTOEXEC.BAT.

## 6.5 Using ADNET.EXE

From the C:\> prompt, type the following:

**CD TMAX** <press the Enter key>.

The prompt will appear as follows: **C:\TMAX>\_**. Type the following:

**ADNET C?** <press the Enter key>.

The “?” refers to the serial port number on your computer that the T-Max® Mgr/Pro is connected to. Refer to the computer's user's guide to determine which serial port you are using then use Table 3 for the proper command line.



The following screen will appear:

**Bank Tan Delay Hours Sessions Auto [ESC] Exit F1 Alt Menu**

Salon Systems, Inc. ADNET Utility Program

Unit #	Time	Status	Type/Version	Max Time
1).	0.00	READY	15/39	20
2).	0.00	READY	15/39	30
3).	0.00	READY	15/38	20
4).	0.00	READY	3/8	40
5).	0.00	READY	15/39	30
6).	0.00	READY	15/39	20
7).	0.00	READY	3/8	30
8).	0.00	READY	15/39	20
9).		-----	Not Present	-----
10).		-----	Not Present	-----
11).		-----	Not Present	-----
12).		-----	Not Present	-----
13).		-----	Not Present	-----
14).		-----	Not Present	-----
15).		-----	Not Present	-----
16).		-----	Not Present	-----

**ADNET.EXE Main Menu Screen**

**Display Descriptions**

**Unit #** - Bed Number or address of T-Max® 3A.

**Time** - Session time, Delay time or Cool Down time remaining

**Status** - Bed Status: "READY", "ON", "DIRTY", "PAUSE" or "COOL".

**Type/Version** - T-Max® 3A software version.

**Max Time** - Maximum time programmed into each T-Max® 3A.

**Command Descriptions**

**Bank** - Displays the next 16 beds. Press B

**Tan** - Starts a session. Press T.

**Delay** - Sets delay for every bed. Press D.

**Hours** - Displays bulb hours for each bed. Press H.\*

**Sessions** - Displays how many sessions the timer has run. Press S.\*

**Auto** - Sets the bed to start immediately after delay or places the T-Max® 3A in pause. Press A.

**ESC** - Pressing the ESC key exits the program. Press the ESC key.

**F1** - Switches to Alternate Menu. Press the F1 key.

\*If more than one T-Max® Mgr/Pro is being used, only the Master T-Max® Mgr/Pro can use these functions.

Salon Systems, Inc. ADNET Utility Program

Unit #	Time	Status	Type/Version	Max Time
1).	0.00	READY	15/39	20
2).	0.00	READY	15/39	30
3).	0.00	READY	15/39	20
4).	0.00	READY	3/8	40
5).	0.00	READY	15/39	30
6).	0.00	READY	15/39	20
7).	0.00	READY	3/8	30
8).	0.00	READY	15/39	20
9).		-----	Not Present	-----
10).		-----	Not Present	-----
11).		-----	Not Present	-----
12).		-----	Not Present	-----
13).		-----	Not Present	-----
14).		-----	Not Present	-----
15).		-----	Not Present	-----
16).		-----	Not Present	-----

**ADNET.EXE Alternate Menu Screen**

**Command Descriptions**

**Rescan** - Causes the T-Max® Mgr/Pro to rescan. Press R.\*

**Get Param** - Displays values stored for a given parameter. Press G.\*

**SeNd Param** - Changes desired parameters of timers. Press N.\*

**Load** - Loads the MGRPLS1.BIN file to the T-Max® Mgr/Pro. Press L.

**Version** - Displays software version number and updates the computer screen after a configuration change. Press V.

**F2** - Displays Main Menu. Press the F2 key.

\* If more than one T-Max® Mgr/Pro is being used, only the Master T-Max® Mgr/Pro can use these functions.

**6.5.1 Delay - Entering a delay**

1) Press D

2) A window will appear and read as follows:

Existing Delay Time: 3  
Enter NEW Delay Time in Minutes ->

Enter the delay time desired followed by the Enter key. You cannot enter a delay time beyond 10 minutes. If you want no delay time, enter 0.

**Note:** The delay you enter will be for every bed in the salon. This value is not saved to disk. Every time ADNET.EXE is loaded, the delay defaults to 3 minutes. If you wish to use Infinite Delay, Refer to Section 5.2.1.

## 6.5.2 Tan - Session Control

### Starting a Session

- 1) Press T
- 2) A window will appear and read as follows: Enter the Timer Number ->. Enter the timer number (or bed number) you want to start, followed by the Enter key.
- 3) The next prompt will read as follows: Enter the Session Time in Minutes ->. Enter the time you want the tanning session to last, followed by the Enter key.

**Note:** If the session time entered is longer than the maximum time programmed into the T-Max® 3A, the session time will default to the maximum time.

If a delay time other than “0” was entered, the Status will read DELAY. A rapidly flashing period will appear on the T-Max® 3A. The light representing that bed on the T-Max® Mgr/Pro will go out. The time on the computer screen will be counting down.

Once the session starts, the bed will turn on and the flashing period will slow to a rate of once per second. The STATUS will read ON.

### Canceling a Session

If at any time you want to cancel a session before the session time expires, press T, enter the bed number, then enter a “0” or “1” for session time.

## 6.5.3 Bank - Monitoring Beds

When ADNET.EXE is loaded, beds 1 through 16 are displayed on screen. Press B and beds 17 through 32 will be displayed. Continuing to press B will continue to increment beds, 16 at a time. Pressing the Alt and B keys simultaneously decrements the bed numbers being displayed, 16 at a time.

## 6.5.4 Hours - Bulb Hours

**Note:** If you are using more than one T-Max® Mgr/Pro, this function is only available on the Master T-Max® Mgr/Pro.

### Monitoring Bulb Hours

**Note:** If you are using more than one T-Max® Mgr/Pro, this function is only available on the Master T-Max® Mgr/Pro.

- 1) Press H

On the right side of the screen, bulb hours will be displayed for each bed. Press H again and the numbers will disappear.

### Clearing Bulb Hours

Refer to Section 6.5.9 for clearing Bulb Hours.

## 6.5.5 Session Counts

**Note:** If you are using more than one T-Max® Mgr/Pro, this function is only available on the Master T-Max® Mgr/Pro.

## Monitoring Session Counts

Press the S key. Numbers will appear to the right of the screen. These are the session counts for each timer. Press the S key again and the numbers will disappear.

## Clearing Session Counts

Refer to Section 6.5.9 for clearing Session Counts.

### 6.5.6 Auto - Changing the Session Start After a Delay.

- 1) Press the A key.
- 2) A window will appear with the following message:

Existing Mode : 1

Enter 1 for Start after Delay or 0 for PAUSE after delay ->.

**Note:** This is for every bed in the salon. This setting is not saved to disk. Every time you enter ADNET, the AutoStart Mode defaults to 1.

If a 1 is entered, the session will start immediately after the delay time has expired. If a 0 is entered, the bed will pause after the delay time has expired, and the customer must press the Start/Stop button on the T-Max® 3A to turn the bed on. The time for that session will start immediately after the delay time has expired in either case. If the T-Max® Mgr/Pro is set to infinite delay, the Auto Start will be ignored (Refer to Section 6.3.11 for setting up Infinite Delay).

### 6.5.7 Rescan

Rescan allows the T-Max® Mgr/Pro to locate all T-Max® 3As. This is needed if a T-Max® 3A is added or subtracted from the system. Press R to start the rescan.

After the T-Max® Mgr/Pro has rescanned the system, the numbers on screen will not change. To update the screen, press V. A window with the software version numbers being displayed. Press Enter key and the window will disappear with the screen updated. Rescan will not interrupt active sessions. Rescan will have no effect on Slave T-Max® Mgr/Pro's.

### 6.5.8 Get Param - Monitoring Parameters.

Get Param allows you to check (without changing) the parameters listed in Table 4

Press G. A window will appear with the following message: Enter the Parameter# to get ->. Enter a number from Table 4 followed by the Enter key. The right side of the screen will show the values stored in each T-Max® 3A for the selected parameter.

### 6.5.9 SeNd Param - Changing Parameters

This function is used to change the parameters in Table 4. If you are using more than one T-Max® Mgr/Pro, this function is only available on the Master T-Max® Mgr/Pro.

- 1) Press N
- 2) A window will appear with the following message: Enter Security Number ->. Refer to the folded Security Number sheet that was inserted in this manual.

- 3) A window will appear with the following message: Enter the Timer Number ->. Enter the timer number (or bed number) followed by the Enter key.
- 4) The following message will appear: Enter the Parameter# to change ->. Enter the parameter number to be changed from Table 4 followed by the Enter key
- 5) The following message will appear: Enter the Data to Send ->. Enter the desired value followed by the Enter key. If you want to clear a parameter value, such as clearing bulb hours after you have changed the bulbs in the tanning bed, enter a 0.

#### **6.5.10 Load - Sending FLASH.BIN to T-Max® Mgr/Pro.**

- 1) Press L
- 2) A window will appear with the following message: Reload NETMGR Program? (y/n)?. Press Y

The window will read as follows:

Stopping Manager, Sending Stop Command

Sending: FLASH.BIN

Sending -> 256 bytes to <address>

File Sent OK

Starting Manager.

Sending: -> 256 Bytes to <address> will scroll, with different address numbers being loaded. After the file is sent the T-Max® Mgr/Pro will rescan.

#### **6.5.11 Manual Parameters**

After loading MGRPLS1.BIN in the T-Max® Mgr/Pro, the setup parameters inside the T-Max® Mgr/Pro may reset. Doing the following can reset these parameters:

- 1) Press X
- 2) A window will appear with the following message: Enter the Manager Delay Time ->. Enter your desired delay time, followed by the Enter key.
- 3) The following message will appear: Enter the Manager Start Mode->. Enter the Auto Start mode you desire followed by the Enter key.

This value is for every bed in the salon. If you enter a 0, after the delay time expires, the session time will start but bed will not energize. The screen will show PAUSE with session time counting down. If a 1 is entered, after the delay time expires, the bed will energize and the screen will show ON. If the AutoStart mode is Set to a 2, then the T-Max® Mgr/Pro is set to Infinite Delay. In this mode, the delay set in the T-Max® Mgr/Pro and the computer will be ignored, the session time will not start and the bed will not energize until the Start/Stop button is pressed on the T-Max® 3A. The screen will show DELAY with the session time entered, the session time will not count down until the Start/Stop button is pressed on the T-Max® 3A.

- 4) The following message will appear: Enter the Manager Max Bed Number->. Enter a number that is equal to or higher than the highest address that you have a T-Max® 3A set to, followed by the Enter key.

5) The following message will appear: Enter the Manager Display Mode. Press 0 followed by the Enter key.

**Note:** The Delay and Auto Start mode will be over-written by the computer's software unless the Auto Start mode is set to 2 (Infinite Delay).

### 6.5.12 Version

Pressing V displays the ADNET version number, the NETMGR ROM version number, and NETMGR RAM version number. Press the Enter Key to Clear the window.

V is also used to update the screen after a bed has been added or subtracted. After you press R to rescan the network to find the current configuration or L to load the MGRPLS1.BIN, press V to display the software version number. Press the Enter key to clear the window and the new configuration will be displayed.

## 7 EXPANSION

### 7.1 Adding Beds

**IMPORTANT: Maximum times for each bed is programmed into the T-Max® 3A at the factory. When ordering the T-Max® 3As, make sure you have the maximum time for each bed available.**

One T-Max® Mgr/Pro will control up to 64 beds. To add beds, simply purchase one T-Max® 3A for each bed that you add.

#### Setting the address on each new T-Max® 3A

Refer to Section 4.1 on setting the address on the T-Max® 3A. Make sure the address set on each additional T-Max® 3A is not the same as a T-Max® 3A you already have.

#### Setting the max. bed number on the T-Max® Mgr/Pro

If you are using a computer, refer to Section 6.5.11 on setting the Max. Bed Number. If you are not using a computer, refer to Section 5.2.1.

#### 7.1.1 The ADNET-Repeater™ (optional)

The T-Max® Series will connect up to 128 beds. However after about 25 tanning beds, you may experience communications errors. If this happens, you may need to add a T-Max® Repeater. The ADNET-Repeater™ connects anywhere in the daisy chain and amplifies the communications signal down the rest of the line. (See Figure G, Section 12.7)

### 7.2 Adding T-Max® Manager/Pro's

T-Max® Series can have up to 8 T-Max® Mgr/Pro's. A computer can be added to each T-Max® Mgr/Pro. Refer to Section 3.2 for instructions on connecting a PC to each T-Max® Mgr/Pro. To add T-Max® Mgr/Pro's, follow these steps:

1) The side of the T-Max® Manager/Pro has 2 terminator switches. Flip these two switches up to the OFF positions on each slave T-Max® Mgr/Pro.

- 2) Apply power to each Slave T-Max® Mgr/Pro.
- 3) Refer to Section 5.2.1 on setting the address on the each Slave T-Max® Mgr/Pro. Make sure each Slave T-Max® Mgr/Pro has a unique address.
- 4) Connect each slave T-Max® Mgr/Pro where you want in the daisy.
- 5) Apply power to the Master T-Max® Mgr/Pro
- 6) Refer to Section 5.2.1 and Set the Max. Slave Setting on the Master T-Max® Mgr/Pro.
- 7) Cycle power to the Master T-Max® Mgr.

**Note:** Each Slave T-Max® Mgr/Pro must be powered up before you power the Master T-Max® Mgr/Pro. Each computer can be used to cancel a session, start a session, and monitor all sessions. However, parameters (bulb hours, session counts, etc.) can only be monitored and changed from the Master T-Max® Mgr/Pro.

## **8 T-MAX® 3A OVERVIEW**

Each T-Max® 3A can individually control a tanning bed, be connected back-to-back for remote front desk control, or be daisy-chained together and controlled by a T-Max® Mgr/Pro to control up to 128 beds. Operation is accomplished via front panel controls. The T-Max® 3A comes fitted with a wall plate and fits into a standard, double wide wall box. In the remote single bed configuration, Start/Stop, Clean Room, and Bulb Hours are the only functions available to the T-Max® 3A from the tanning room.

### **8.1 Connecting To The Tanning Bed**

Refer to Section 2.1, Step 4 for connecting the T-Max® 3A to the tanning bed.

### **8.2 Setting Parameters on the T-Max® 3A**

**Note:** If you are using a T-Max® Mgr/Pro and multiple T-Max® 3As, remove power from the T-Max® Mgr/Pro then cycle power to each T-Max® 3A. Keep power removed from the T-Max® Mgr/Pro until all parameter changes are complete. Refer to Table 1 for Parameter Numbers and Descriptions.

- 1) Apply power to the T-Max® 3A
- 2) Press and hold the Start/Stop and Up buttons simultaneously on the T-Max® 3A until a .1 appears on the display. This should take 5-6 seconds. Release the Start/Stop button.
- 3) Press the Up or Down Button until the parameter number that you want is displayed.
- 4) Press the Start/Stop Button to observe the current value for that parameter.

The Display will show a number with a period in the lower center of the display. The numbers will stop flashing and stay illuminated. The number shown is the current value for that parameter.

For Lamp Hours, Session Counts, etc. the value displayed can be as high as 9999. To display this value, the T-Max® 3A will flash two numbers-three times, then two numbers-three times, pause, two numbers-three times, two numbers-three times, pause, etc. For

example, if you are checking lamp hours (Parameter 6) and the display flashes the numbers 53 three times, then 14 three times, pauses then repeats, then the total lamp hours stored in that T-Max® 3A is 5314.

5) Press the Up or Down button to change the parameter to the desired value.

If you want to clear the value for that parameter, press the Up and Down buttons at the same time until the display shows “.0”.

6) Press the Start/Stop Button.

The display will show the parameter number you just changed and a solid period in the lower center of the display. You may now change another parameter by pressing the Up and Down buttons until the parameter you want displayed. Repeat Steps 2-4.

7) To exit the Parameter mode and make the T-Max® 3A available for the next session, press and hold both the Up and Down buttons until the display shows a 0 with no periods is displayed.

### 8.2.1 Setting the Address

Refer to Section 4.1 on setting the address on the T-Max® 3A manually.

### 8.2.2 Setting Delay Time.

**Note:** If you are using the T-Max® Mgr/Pro, delay does not need to be set on the T-Max® 3A.

1) Apply power to the T-Max® 3A

2) Press and hold the Start/Stop and Up buttons simultaneously on the T-Max® 3A until a .1 appears on the display. This should take 5-6 seconds. Release the Start/Stop button.

3) Press the Up Button until a .3 is displayed.

4) Press and release the Start/Stop button.

A number will appear on the display and be flashing. A period will be illuminated in the center of the display. This is the current delay time.

5) Press the Up and Down Button until the desired delay time is displayed.

The highest delay time that can be set on the T-Max® 3A is 10 minutes. If you want no delay time, set the display to 0. If you set the Delay Time to 0, the session time will start immediately after the Start/Stop button is pressed.

6) Press the Start/Stop button until a .3 is displayed. The 3 will not flash.

To exit Parameter Mode, press and hold the Up and Down button until a 0 is displayed.



## **9 IN-ROOM SINGLE BED CONTROL**

### **9.1 Starting a Session**

If you are using a T-Max® Mgr/Pro, and you want to use the T-Max® 3As manually, you must unplug power from the T-Max® Mgr/Pro then unplug power to the T-Max® 3A then plug it back in. Power must stay removed from the T-Max® Mgr/Pro while the T-Max® 3A is being used independently,

- 1) Press the Up and Down Button on the T-Max® 3A until the session time is displayed. If the display shows a 0, and you want to count down from the maximum time, press the down button.
- 2) Press and release the Start/Stop button to start the session.

If a delay other than 0 is entered, the delay will count down. A period on the lower right corner of the display will flash rapidly. When the session starts, the period will flash at a once per second rate.

### **9.2 Pausing a Session**

To pause a session press the Start/Stop button. The flashing period on the lower right corner of the display will stop flashing. The session time will continue to count down.

To restart the session, press the Start/Stop button on the T-Max® 3A. The period on the lower right corner of the display will resume flashing.

### **9.3 Canceling a Session.**

To cancel a session, press the Start/Stop button to pause the session then press the Up button. The display will show a solitary 0.

## **10 REMOTE SINGLE BED CONTROL**

A T-Max® 3A can be used to control another T-Max® 3A. This is ideal for small salons that are not using a T-Max® Mgr/Pro. Two T-Max® 3As are required for remote single bed control.

### **10.1 Wiring**

Place one T-Max® 3A in the tanning room and one at the desired remote location. Connect the 9V @ 200mA power supply to the power in on the back of each T-Max® 3A. Plug each power supply into a 120VAC outlet (refer to Figure A, Section 12.1). Connect the T-Max® 3A in the tanning room to the tanning bed as described in Section 2.

Run the provided modular cable from the tanning room to the remote T-Max® 3A. Connect the modular cable to one of the RJ-22 ports on each T-Max® 3A.

## 10.2 Configuration

Set the address on the T-Max® 3A in the tanning room to “1”, and the address on the T-Max® 3A at the front desk to “0” as described in Section 4.1. Disconnect the modular cables when setting the addresses on both T-Max® 3As.

Use the Front Desk T-Max® 3A to set the Delay as described in Section 8.2.2. Any delay time set on the T-Max® 3A in the tanning room will be ignored.

## 10.3 Session Control

### Starting a session

- 1) Press the Up or Down Button on the T-Max® 3A at the front desk until the session time is displayed.
- 2) Press the Start/Stop button on the front desk T-Max® 3A to start the session.

If a delay other than 0 is set, the delay will count down. A period on the lower right corner of the display will flash rapidly. When the session starts, the period will flash at once per second rate. If there is no delay entered, the session will start immediately.

### Pausing During the Session

To pause the session press the Start/Stop button on the T-Max® 3A in the tanning room. The flashing period on the lower right corner of the display will stop flashing and stay illuminated. The session time will continue to count down and reflect the remaining session time. To restart the session, press the Start/Stop button on the T-Max® 3A in the tanning room. The period will continue flashing.

### Canceling a Session

Press the Start/Stop and Up buttons on the T-Max® 3A at the front desk at the same time.

## 11 OTHER FEATURES and OPTIONS

### 11.1 Clean Room

Once the session time has elapsed, the display will show two solid periods only. This is an indication that the room needs to be cleaned. To clear the clean room indication, press and hold the Up button on the T-Max® 3A in the tanning room until the two periods disappear and a “0” appears. To disable the clean room feature, set parameter 9 to a 0 (Refer to Section 5.2.6 if you are using the T-Max® Mgr/Pro manually, Section 6.3.9 if you are using ADNET, or Section 8.2 if you want to disable Clean Room at the T-Max® 3A).

If the Clean Room and Cool Down Modes are enabled, the clean room will be displayed ADNET will show Dirty, but the Cool Down time will be shown counting down. If the room is cleaned before the cool down time has elapsed or if the clean room is disabled, a solid period will be displayed on the lower center on the T-Max® 3A and On the T-Max® Mgr. The ADNET screen will show Cool with the cool down time counting down. You cannot start a session until the cool down time has elapsed.

If the Clean Room and Cool Down Modes are enabled, the clean room will be displayed. If the room is cleaned before the cool down time has elapsed or if the clean room is disabled, a

solid period will be displayed on the lower center on the T-Max® 3A. The display and ADNET will read COOL and the light on the left of the T-Max® Mgr/Pro will flash green. You cannot start a session until the cool down time has elapsed.

## 11.2 Cool Down Mode

Cool Down mode is used for beds that require a time to cool down before the next session can be run. High-pressure beds primarily use this. While the T-Max® 3A is in Cool Down Mode, a session cannot be run until the cool down time has expired.

To enable Cool Down Mode, set parameter 13 to the time in minutes you want the cool down time to last. Setting parameter 13 to 0 disables Cool Down Mode. (Refer to Section 5.2.6 if you are using the T-Max® Mgr/Pro manually, Section 6.3.9 if you are using ADNET, or Section 8.2 if you want to disable Clean Room at the T-Max® 3A)

After the session ends, the T-Max® 3A will go into Cool Down Mode. A single period will be displayed on the T-Max® 3A and T-Max® Mgr/Pro will show a flashing green light for the duration of the cool down time. ADNET and the T-Max® Mgr/Pro display will show Cool with the time counting down. If clean room is also enabled the clean room will be displayed. ADNET and the T-Max® Mgr/Pro display will show Dirty and the light for that room will be solid red, but the Cool Down time will be shown counting down. If the room is cleaned before the cool down time has elapsed or if the clean room is disabled, a solid period will be displayed on the lower center on the T-Max® 3A. The T-Max® Mgr/Pro display and ADNET screen will show Cool with the cool down time counting down. You cannot start a session until the cool down time has elapsed.

## 11.3 T-Max® Monitor/Plus

The T-Max® Monitor/Plus allows the salon owner to check the status of all the beds at any place in the salon.

The T-Max® Monitor/Plus has 16 LED displays showing remaining session time. Multiple T-Max® Monitor/Plus' can be connected for large salons. The T-Max® Monitor/Plus can be connected anywhere in the T-Max® chain. You can connect them at the front desk if you want to glance over and see remaining session time, or you can place them anywhere else in the salon so the cleaning staff can see how much session time is remaining for each room. Contact your dealer for more information.

## 11.4 T-Max® Sentry™ (Optional)

The T-Max® Sentry™ is a current sensing device that detects when a bed is energized when it should not be or is not energized when it should be. If you are not using a T-Max® Mgr/Pro, the T-Max® 3A must be programmed with this option enabled at the factory. Contact your dealer for this option.

**Note:** Remove power from the tanning bed when installing this option. We recommend that a licensed electrician installs this option.

1) Place the Jumper on Pins 1&2 on JP99 on the back of the T-Max® 3A (See Figure B).

- 2) Attach the two wires on the T-Max® Sentry™ to the terminal block labeled “Sensor” on the T-Max® 3A (refer to Figure B, Section 12.2 and Figure C, Section 12.3).
- 3) Find a load carrying wire on your tanning bed (not the wire connected to the relay on the T-Max® 3A). Run that wire through the center of the T-Max® Sentry™ (refer to Figure D, Section 12.3).

If your tanning bed draws less than 10 AMPS, wrap the wire around the T-Max® Sentry™ one time (refer to Figure D, Section 12.4).

If the bed remains on after the session time has expired, or if the bed did not energize after a session has started, an error will appear on the T-Max® 3A. An audible alarm will also sound.

Set Parameter 4 on the T-Max® 3A to a 1 (refer to Section 5.2.2 if you are the T-Max® Mgr/Pro for manual operation or Section 6.5.9 if you are using ADNET).

Refer to Section 13 for troubleshooting tips.

## **11.5 High Pressure (Single-Side) Beds**

The T-Max® 3A has an alarm that will beep for 10 seconds half way through the session informing the customer to turn over. If you are not using a T-Max® Mgr/Pro, this option must be enabled at the factory.

If you are using a computer, refer to Section 6.5.9 and set parameter 2 to a 1 for the bed that you are enabling the Mid-Session Flip alarm. If you are using the T-Max® Mgr/Pro manually, refer to Section 5.2.2 on how to send parameters manually.

### **11.5.1 Installing External Speaker (Optional)**

If the speaker on the T-Max® 3A is not loud enough, a T-Max® Speaker that connects to the T-Max® 3A is available. To install the T-Max® Speaker do the following. See Figure B Section 12.2 for J6 location and J99 and J100 locations and jumper positions.

- 1) Connect the cable on the T-Max® Speaker to the J6 on the back of the T-Max® 3A
- 2) Place the Jumper on J100 to pins 2 and 3 on the back of the T-Max® 3A
- 3) Set Parameter 20 to a 1 (Refer to Section 5.2.2 if you are using the T-Max® Mgr/ Plus manually, Section 6.3.9 if you want to use ADNET or Section 8.2 if you want to enable this function at the T-Max® 3A).

### **11.6 Connecting a Remote Push Button to the T-Max® 3A (optional)**

A T-Max® 3A can be used to control another T-Max® 3A. This is ideal for small salons that are not using a T-Max® Mgr. Two T-Max® 3As are required for remote single bed control.

A remote push button can be connected to the T-Max® 3A to start sessions. You can get an external start kit from your distributor that provides a 50' cable with a pushbutton and a wall mounting plate.

Connect the wires from your external push button circuit to the “EXT START” Screw terminals on the back of the T-Max® 3A. Place a jumper on J100-pins 2 & 3 (See Figure B,

Section 12.2 for jumper locations. See Figure J Section 12.10 for an example of an External Push Button circuit).

When the external push button is pressed a contact closure is applied to the Ext. Start screw terminals on the back of T-Max® 3A.

To start a session, press the Up or Down button on the T-Max® 3A to set the time, then when ready, press the Remote push button instead of the Start/Stop button on the T-Max® 3A.

### **11.7 T-Max® Enclosure (Optional)**

The T-Max® Enclosure is a metal box that connects to a T-Max® 3A so that the unit can either be hung on a wall or set on a table. Tear drop holes on the back of the T-Max® Enclosure allow for easy installation.

The T-Max® Enclosure is slanted to make the T-Max® 3A push buttons and display easy to access and read. The T-Max® 3A can fit so that it is slanted up or down. Slanted up is ideal for setting the timer on a desk. Slanted down is great for hanging the T-Max® 3A on a wall.

To install the T-Max® 3A to the T-Max® Enclosure, first run the cable through the wire holes on the T-Max® Enclosure and connect them to the T-Max® 3A as described in Section 3.3. Connect the grommets to hold the wires in tight. Plug any unused holes with the provided plastic plugs. Connect the T-Max® 3A to the T-Max® Enclosure using the four screw provided with the T-Max® 3A.

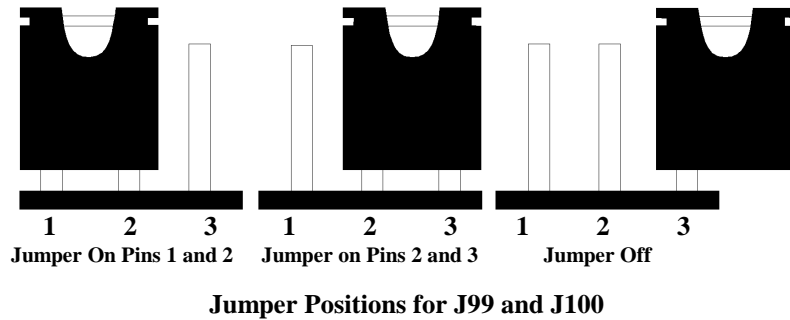
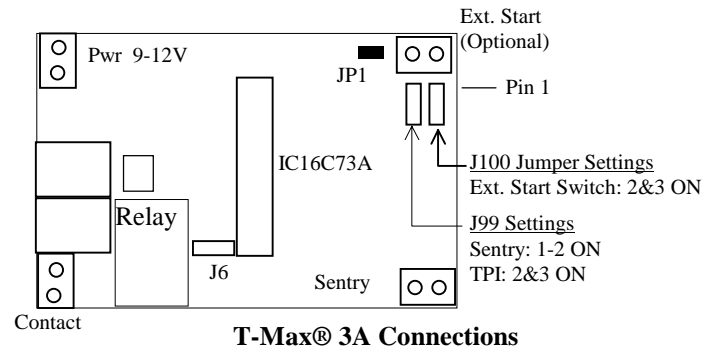
## 12 FIGURES

### 12.1 Figure A - Front View Of The T-Max® 3A

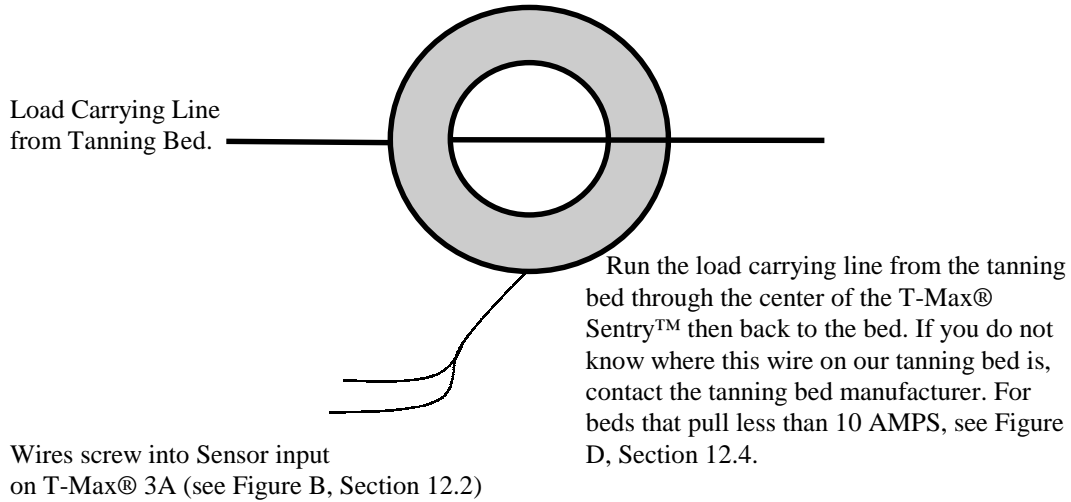


**T-Max® 3A**

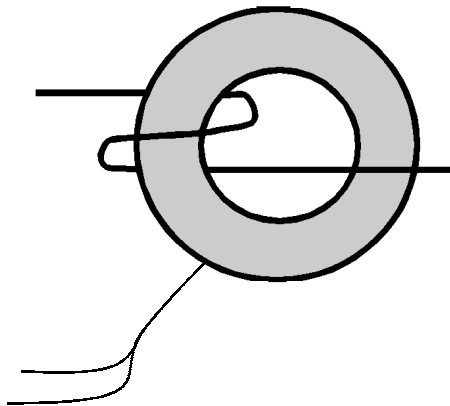
### 12.2 Figure B - Rear View Of T-Max® 3A Circuit Board



### 12.3 Figure C - Connecting The T-Max® Sentry™



### 12.4 Figure D - Connecting To Lower Current Beds



For beds that pull less than 10 AMPS, wrap the wire around the T-Max® Sentry™ one time.

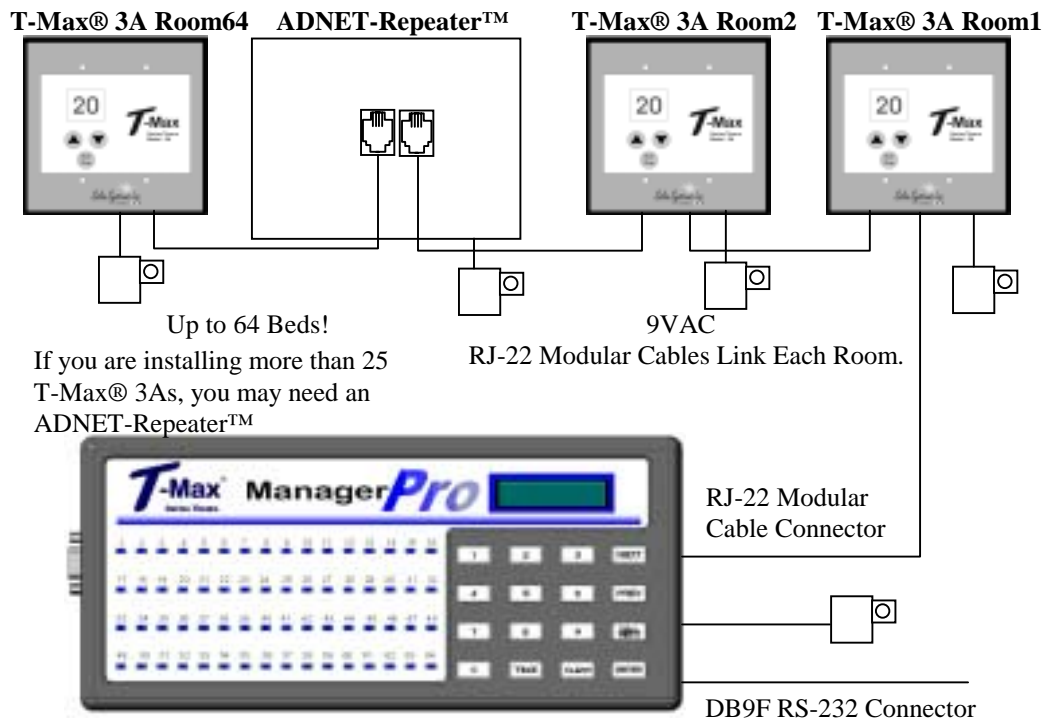
The T-Max® Sentry™

## 12.5 Figure E - The T-Max® Mgr/Pro



Front View of the T-Max® Mgr/Pro

## 12.6 Figure F - Connecting The T-Max® Series

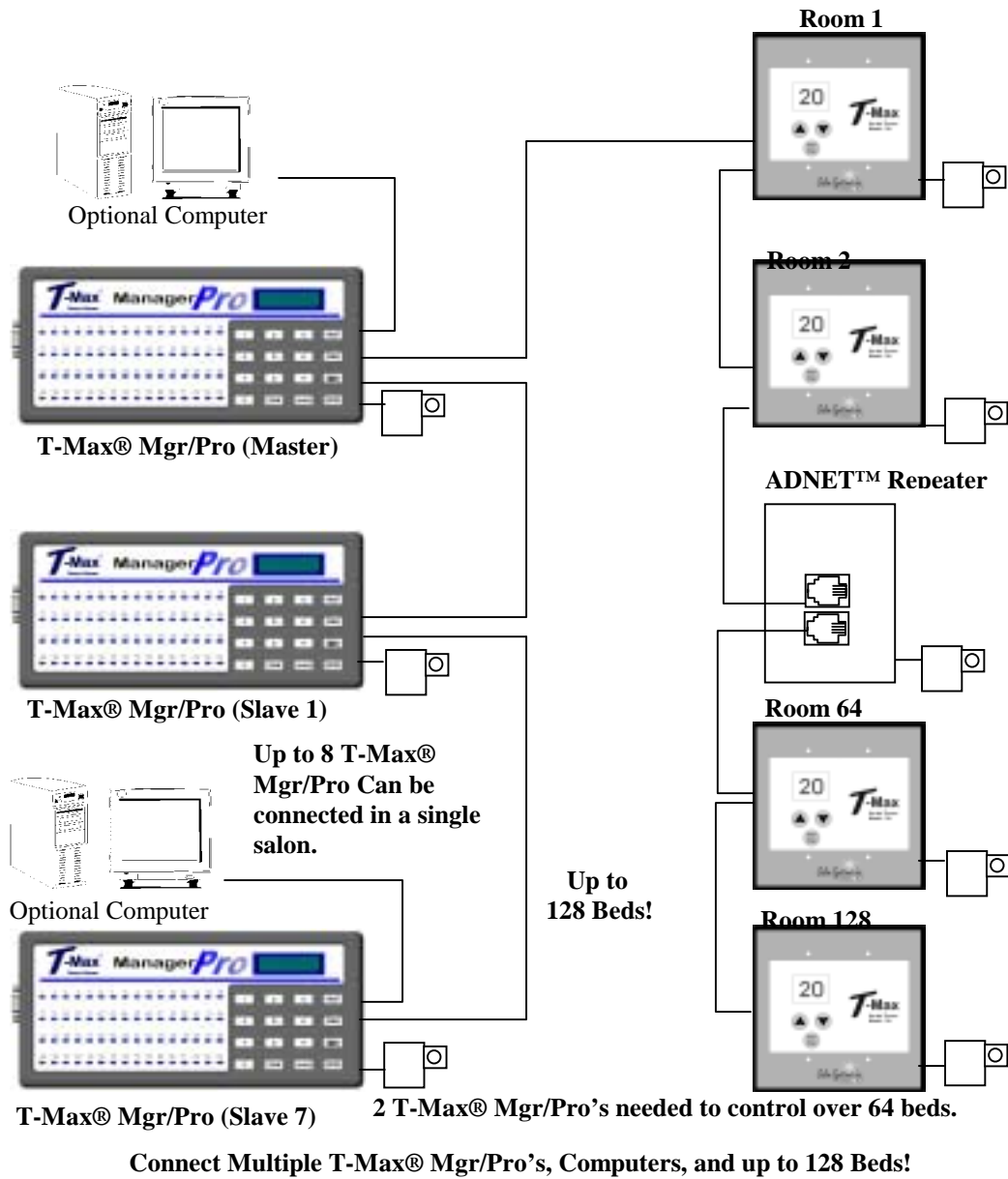


2 T-Max® Mgr/Pro's can be connected to control up to 128 beds!

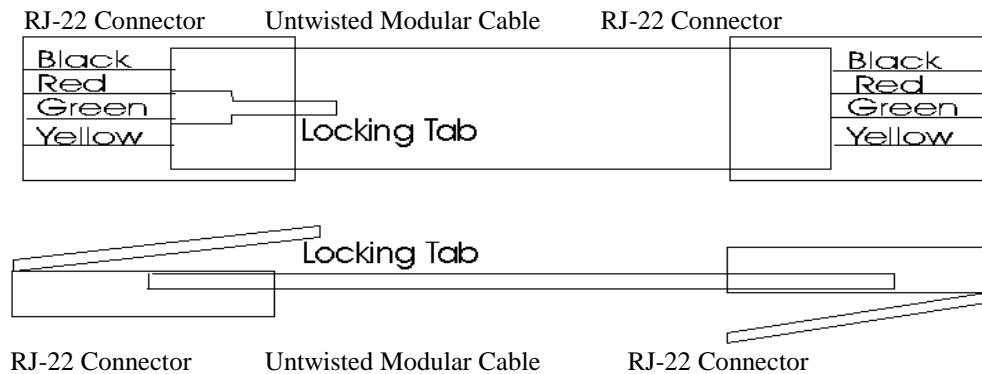
Connecting the T-Max® Series is Easier than ever!



12.7 Figure G - Multiple Configurations



## 12.8 Figure H - Modular Cable Pinouts



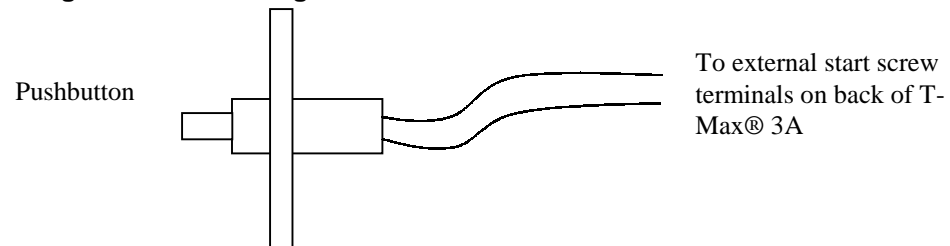
**Use this diagram if you are making your own cables**

### **Important!!!**

Salon Systems, Inc. highly recommends that you do not modify the cables provided with each T-Max® 3A. If you need longer cables, contact your dealer or Salon Systems, Inc. All cables are pre-tested at the factory for proper connection. If you are not careful in making your own cables, the system may not work properly!

*Note:* If you are making your own cables, you will need a tool for connecting RJ-22 connectors. Call Techni-Tool @ 1-800-832-4866 and ask for part number 702ST019.

## 12.9 Figure I – Connecting An External Push Button to a T-Max® 3A



The T-Max® 3A can be ordered with an external push button option. When the button is pushed, a contact closure is applied to the External Start input on the T-Max® 3A. If the T-Max® 3A is in delay, the bed will be energized without having to press the Start/Stop button.

## 13 TROUBLE SHOOTING

The T-Max® Series has been designed for years of trouble free service. However, if a problem does arise, please follow the following trouble shooting steps before calling technical support.

### 13.1 Trouble Shooting.

#### 1) No Lights Illuminated on the T-Max® Mgr/Pro

Make sure that the transformer is plugged into the wall and into the power input on the T-Max® Mgr/Pro. Try plugging the T-Max® Mgr/Pro into a different outlet. If you are using a surge suppresser or UPS backup system, try plugging the T-Max® Mgr/Pro directly into the wall outlet. Check the circuit breaker in your building to make sure it's on. Use a voltmeter to measure the voltage on the transformer on the end which connects to the T-Max® Mgr/Pro.

#### 2) The T-Max® Mgr/Pro does not show any beds, and the VFD display shows nothing.

This is an indication the program loaded in the T-Max® Mgr/Pro is lost or has been corrupted. From the C:\> prompt, type the following: ADNET C1. Once the ADNET Utility program is on your computer screen, press L. Then press Y. After you load the program back into the T-Max® Mgr/Pro, you may have to reset settings like the delay, max. beds number and Auto Start. Refer to Section 6.5.11.

#### 3) The T-Max® Mgr/Pro does not see any beds.

Go through the Quick installation setup in Section 2. Cycle power on the T-Max® Mgr/Pro. The T-Max® Mgr/Pro will rescan the network. Make sure each T-Max® 3A has a unique address. Swap the modular cable between the T-Max® Mgr/Pro and the T-Max® 3A is connected to.

#### 4) When going through the Quick Installation set-up, when I press 888 then Enter on the T-Max® Mgr/Pro to set the addresses, some or all of the T-Max® 3As do not go to 99 and buzz.

Check the cable between the T-Max® Mgr/Pro and the first T-Max® 3A. Swap the T-Max® 3A in the first room with the last one.

#### 5) When power is applied to the T-Max® Mgr/Pro, bed 1-5 show on the T-Max® Mgr/Pro, but the rest of my beds do not show.

Go through the Quick Installation in Section 2. Make sure that power is applied and modular cables are connected to each T-Max® 3A. Try a new modular cable between the last T-Max® 3A displayed and the first T-Max® 3A that does not show on the T-Max® Mgr/Pro in the daisy chain. If you don't have a spare cable, swap the cable between the last T-Max® 3A that appears on the T-Max® Mgr/Pro and the first T-Max® 3A that does not appear on the T-Max® Mgr/Pro with a modular cable that is connected between two T-Max® 3As that appear on the T-Max® Mgr/Pro display. If the problem follows, the modular cable is either bad or wired incorrectly. Check the modular cable pinouts on the defective cable (refer to Section 12.9, Figure I). If the problem does not follow, swap the first T-Max® 3A that does not appear on the T-Max® Mgr/Pro in the daisy chain with one that does. If the problem follows, return the defective T-Max® 3A for repair. If the problem does not follow, swap the last T-Max® 3A that appears on the T-Max® Mgr/Pro with one of the other T-Max® 3As that appears on the T-Max® Mgr/Pro.

#### 5) When running ADNET, the computer beeps, the screen reads communication error.

This means that ADNET.EXE cannot locate the T-Max® Mgr/Pro. Make sure the serial cable is connected to the computer and the T-Max® Mgr/Pro. Make sure there is power to the T-Max® Mgr/Pro. If it still does not work, determine which serial port the T-Max® Mgr/Pro is connected to. This will be in the computer's literature. If you cannot determine which port you are connected to, type the following: ADNET C2 <Enter>, then ADNET C3 <Enter>, then ADNET C4. <press the Enter key>. If you see the Screen shown in Section 6.1, the computer is communicating with the T-Max® Mgr/Pro. If none of these command lines work, try another serial port cable. Try another serial port on the computer (most computers come with two serial ports).

#### 6) After running Rescan in ADNET, the screen does not show the beds added or subtracted.

Press V. A window will appear displaying the software versions. Press Enter and the window will disappear showing the ADNET screen with the correct configuration.

**7) The Slave T-Max® Mgr/Pro does not show any beds.**

Check and make sure the modular cable is connected to the Slave T-Max® Mgr/Pro. Recycle power to the Master T-Max® Mgr/Pro. Cycle power to the Slave T-Max® Mgr/Pro then cycle power to the Master T-Max® Mgr/Pro.

**8) How do I make the T-Max® 3As work as stand-alone timers?**

Remove power from the T-Max® Mgr/Pro. Unplug power from each T-Max® 3A, wait 5 seconds, then plug them back in. On the T-Max® 3A, press the Set button to set time, then press the Start/Stop button to start the session. Power to the T-Max® Mgr/Pro must stay off while the T-Max® 3As are being used as independent timers.

**9) When I start a session manually, the session time will not start.**

Press the Call/Menu button. The following message will appear: SECURITY #. Enter your security number for security level 1 (See the enclosed Security Level Sheet). An Asterisk (\*) will appear on the lower left corner of the VFD display. You can then start sessions manually.

**10) I can start sessions from the Master T-Max® Mgr/Pro, but not the Slave T-Max® Mgr/Pro**

Enter Security Level 1 (See your enclosed Security Sheet). An Asterisk (\*) will be displayed on the lower left corner of the T-Max® Mgr/Pro. Cycle power to both the Slave T-Max® Mgr/Pro then the Master T-Max® Mgr/Pro. Watch the VFD display. On the lower right, make sure the display shows "VER-202/T". If it does not contact your dealer for the latest T-Max® Series Utility Software and load it into the T-Max® Mgr/Pro as described in Section 6. Check and make sure the modular cable is connected to the Slave T-Max® Mgr/Pro. Recycle power to the Master T-Max® Mgr/Pro. Go into the Master T-Max® Mgr/Pro parameter mode (Security Level 3) and set the Max Slave Number to 7. Cycle power to the Slave T-Max® Mgr/Pro then cycle power to the Master T-Max® Mgr/Pro.

**11) When checking my bulb hours (or any other parameter), the value shows 65535 for all beds. Why?**

This is an indication that you are trying to check parameters from a Slave T-Max® Mgr/Pro. You can only check and change parameters from a Master T-Max® Mgr/Pro. To determine if the T-Max® Mgr/Pro is a master or slave, cycle power to the T-Max® Mgr/Pro and watch the VFD display. The top line will read "TESTING MEMORY #". If the # is a number other than a 0 (1-7), then this T-Max® Mgr/Pro is a slave. The T-Max® Mgr/Pro that reads "TESTING MEMORY 0" is the master.

**12) After reloading the T-Max® Mgr/Pro (pressing L in ADNET.EXE), the T-Max® Mgr/Pro only reads bed 1.**

Refer to Section 6.5.11.

## 13.2 Error Codes

Error codes have been incorporated in the T-Max® 3A and the T-Max® Mgr/Pro to aid in troubleshooting.

Error Codes T-Max® 3A	Codes T-Max® Mgr/Pro	Description	Possible Solution
N/A	E0	<b>Unrecognized Parameter</b>	Load the T-Max® Manager/Pro with the newest version of software.
91	E1	<b>EEPROM Error</b> - On power up, detects error.	1) Cycle power on T-Max® Mgr/Pro 2) Check parameters on T-Max® 3A. 3) If error occurs repeatedly, return T-Max® 3A for service.
92	E2	<b>Current Sense Error - Current Off</b> Session has started but bed is off.	1) If you are not using a T-Max® Sentry, set parameter 4 to 0. <b>Check to see if bed is off or illuminates momentarily. If bed is off</b> 1) Check power to bed. 2) Check outlet bed is plugged into. 3) Check circuit breaker 4) Swap T-Max® 3A with one that is working. <b>If bed illuminates momentarily:</b> 1) Make sure T-Max® Sentry™ is connected properly (refer to T-Max® 3A User's Guide). 2) Have electrician check beds current draw. If the bed draws less than 10AMPS, wire from the bed needs to be wrapped around the T-Max® Sentry™ one time. Refer to T-Max® 3A User's Guide.
93	E3	<b>Current Sense Error - Current On</b> Session has expired but bed remains on.	<b>Check to see if bed is on or off. If bed is on:</b> 1) Swap T-Max® 3A with one that is working properly. 2) Check bed for proper operation. <b>If bed is off</b> 1) Have electrician check the current draw on bed. If fans drawing <5AMPS, wrap wire from bed around the T-Max® Sentry™ one time. Refer to T-Max® 3A User's Guide.
94	E4	<b>Max Time Error</b> - T-Max® 3A reporting wrong Max time.	1) Check the delay on the T-Max® 3A. Make sure the Delay not set to 55. 2) Replace the T-Max® 3A.
N/A	E6	<b>Checksum Error</b> - T-Max® Mgr/Pro received bad value from T-Max® 3A	1) Cycle power on the T-Max® Mgr/Pro and T-Max® 3A. 2) Swap the T-Max® 3A with one that is operating correctly.
N/A	E7	<b>Time Out Error</b> - The T-Max® Mgr/Pro did not receive the correct information from the T-Max® 3A	1) Make sure 9VAC @ 200mA transformer powering T-Max® 3A is plugged in to 120VAC outlet. 2) Swap transformer with one that is working. 3) Check modular cable to make sure it has not been disconnected. Replace modular cable. 4) Swap T-Max® 3A with one that is working.

## 14 Index

### Adding Beds, 30

#### ADNET 2000™

- Auto Start, 17
- Canceling a Session, 19
- Com Port Selection, 16
- Comms Status Screen, 17
- Creating a Shortcut, 13
- Delay, 17
- Getting and Changing Parameters, 20
- Infinite Delay, 17
- Installing, 13
- Loading New Software into the T-Max®  
Mgr/Pro, 21
- Manager Utilities, 21
- Running, 17
- Setting Up T-Max®Mgr/Pro, 22
- Starting a Session, 19

#### ADNET.EXE

- Auto Start, 28
- Changing Parameters (SeNd), 28
- Changing T-Max® Mgr/Pro Settings  
Using X, 29
- Function Key Descriptions, 25, 26
- Installing, 24
- Load, 29
- Loading as a TSR, 24
- Rescan, 28
- Session Counts, 27
- Using, 24

#### ADNET-Repeater™, 5, 30, 40

#### Auto Addressing

See Quick Installation.

#### Auto Start

- Manual Setup, 8
- Using ADNET, 28
- Using ADNET 2000™, 17

#### Bed Status, 12

#### Bulb Hours

- Manual - See Parameters.
- Using ADNET, 20, 27

#### Cable Pinouts

See Modular Cable Pinouts.

#### Canceling Sessions

- Manually, 11

Using ADNET, 27

Using ADNET 2000™, 19

Using the T-Max 3A® as an Independent  
timer, 33

#### Clean Room

- Clearing, 34
- Disabling - See Parameters.

#### Computer Operation

- ADNET, 23
- ADNET™ 2000, 17

#### Cool Down Mode, 35

#### Delay

- Manual Setup, 8
- Using ADNET, 26
- Using ADNET 2000™, 17

#### Error Codes, 45

#### Expansion - Adding T-Max® 3As, 30

#### External Push Button Option, 36, 42

#### Installation

- ADNET 2000™, 13
- ADNET.EXE, 24
- Quick Installation, 5
- T-Max® 3A with T-Max® Mgr/Pro, 7
- T-Max® Mgr/Pro, 6

#### Jumpers

- T-Max® 3A, 38

#### Lamp Hours

See Bulb Hours.

#### Load, 29

#### Loading New Software into the T-Max®

##### Mgr/Pro

- Using ADNET.EXE, 29
- Using ADNET™ 2000, 21

#### Maximum Bed Number

- ADNET 2000™, 22
- Manual Setup, 9
- Using ADNET, 29

#### Modular Cable Pinouts, 42

#### Parameters

- Changing and Getting Manually, 10
- Changing and Getting Using ADNET, 28
- Getting and Changing Using ADNET  
2000™, 20
- Table, 10

- Pausing a Session**, 12, 33
- Quick Installation**, 5
- Rescan**
  - Using ADNET, 28
  - Using ADNET 2000™, 22
- Security Numbers**, 11
- Session Counts**
  - Manual - See Parameters.
  - Using ADNET, 27
  - Using ADNET™ 2000, 20
- Specifications**, 5
- Starting Sessions**
  - Manually**, 11
    - Using ADNET, 27
    - Using ADNET 2000™, 19
- T-Max® 3A**
  - Adding, 30
  - Canceling Session, 33
  - Circuit Board Connections, 38
  - Components, 4
  - Connecting to tanning bed, 6
  - Diagram, 38
  - External Push Button, 36, 42
  - Manual, 31
  - Manual Installation, 7
  - Pausing Session, 33
  - Setting Delay Manually, 32
  - Setting Parameters Manually, 31
  - Setting the Address Manually, 7
  - Specifications, 5
  - Using as an Independent timer, 33
- T-Max® Enclosure**, 4, 37
- T-Max® Manager/Pro**
  - Adding T-Max® Mangers/Pro's, 30
  - Address, 9
  - Components, 4
  - Connecting to a Computer, 6
  - Going From Computer to Manual Control, 11
  - Manual Installation, 6
  - Manual Set Up, 8
  - Manual Set Up ADNET.EXE, 29
  - Setting the Address, 30
  - Specifications, 5
  - Starting Sessions Manually, 11
- T-Max® Monitor/Plus**, 4, 35
- T-Max® Sentry™**, 4, 35, 39
- T-Max® Speaker**, 4, 36
- T-Max®3A**
  - Enclosure, 4, 37
  - RemoteSingleBedControl-UsingoneT-Max®3AtocontrolanotherT-Max®3A., 33
- Trouble-Shooting**, 43
- Wiring**, 5, 6, 40, 41